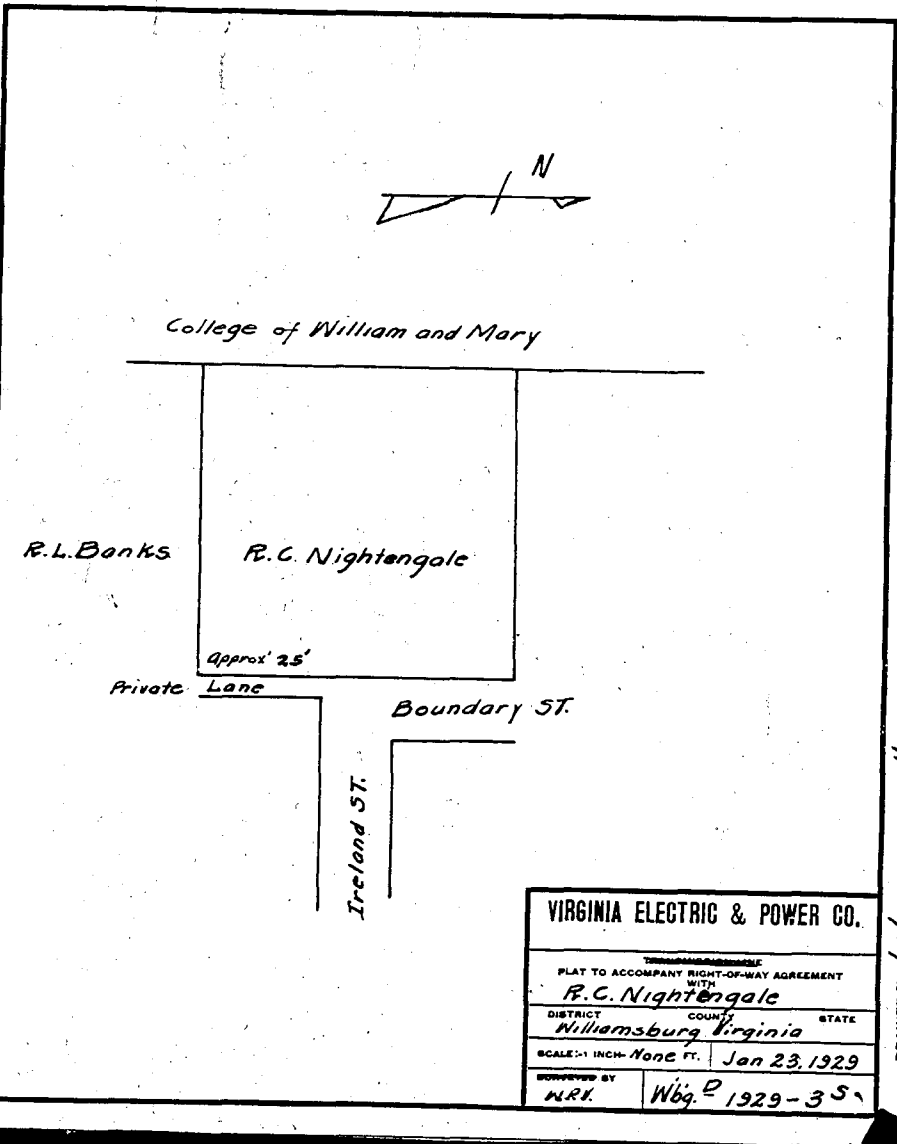


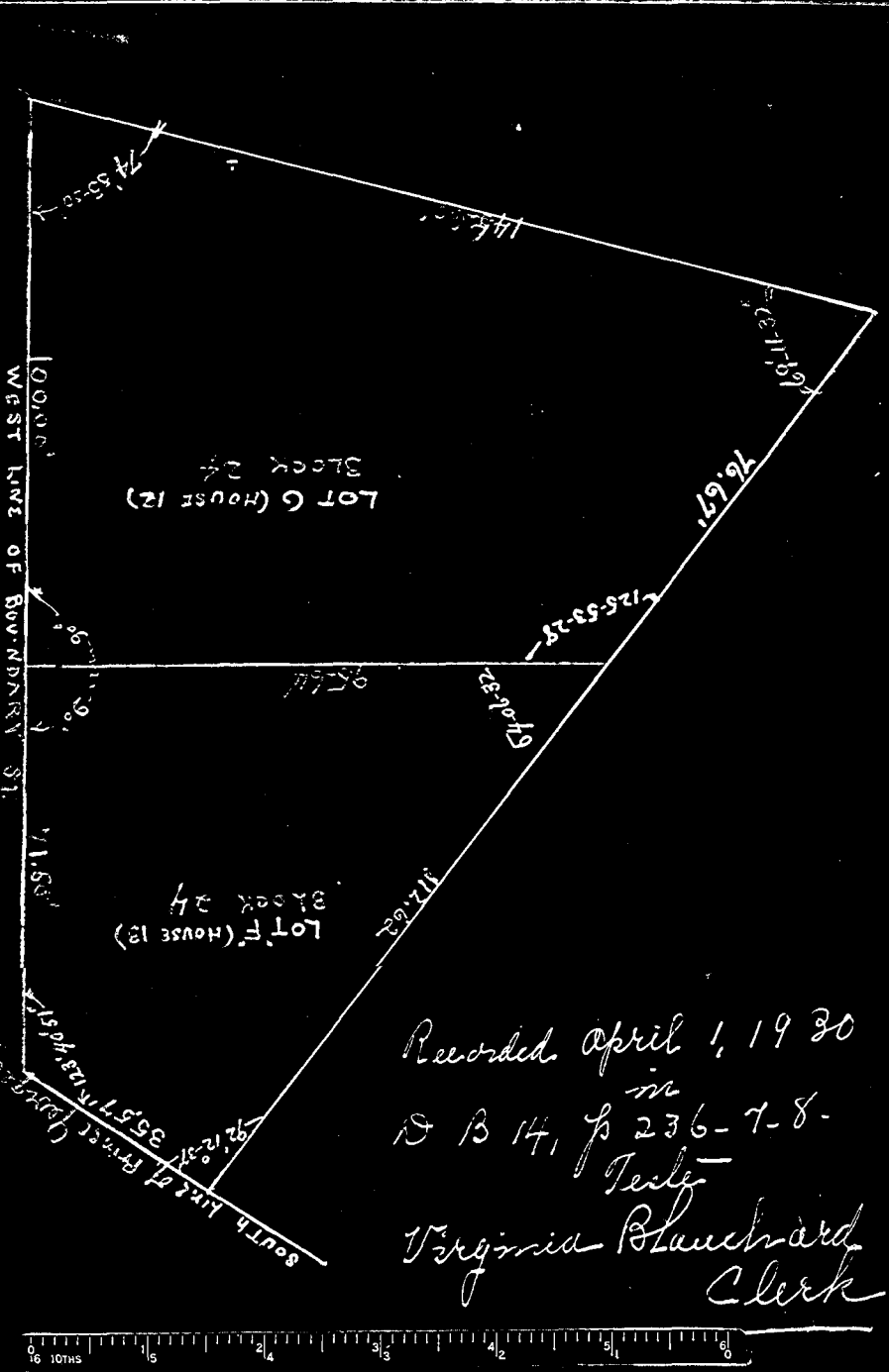
VIRGINIA ELECTRIC & POWER CO.
 PLAN TO ACCOMPANY RIGHT-OF-WAY AGREEMENT
 WITH
R. L. Banks.
 DISTRICT COUNTY STATE
Williamsburg Virginia
 SCALE: 1 INCH = 40 FT. Jan 23, 1929
 APPROVED BY
 N.R.K. Wbg. P. 1929-45

SHEET NO. 5
 DRAWER NO. 1-1



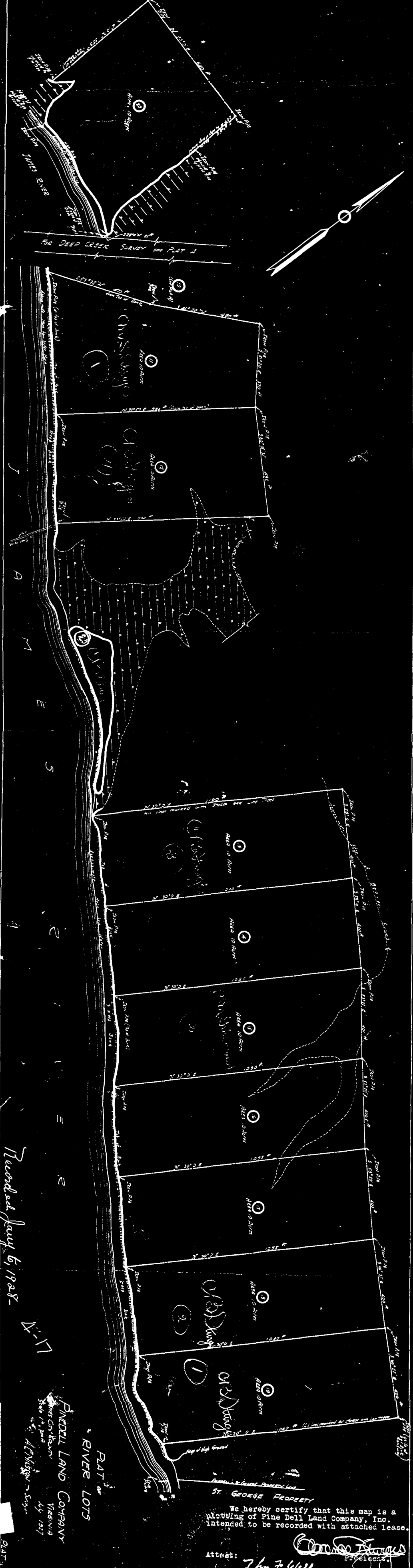
VIRGINIA ELECTRIC & POWER CO.
 PLAN TO ACCOMPANY RIGHT-OF-WAY AGREEMENT
 WITH
R. C. Nightengale
 DISTRICT COUNTY STATE
Williamsburg Virginia
 SCALE: 1 INCH = 40 FT. Jan 23, 1929
 APPROVED BY
 N.R.K. Wbg. P. 1929-35

SHEET NO. 11
 DRAWER NO. 1-1



Recorded April 1, 1930
 in
 B B 14, p 236-7-8.
 Testy
 Virginia Blanchard
 Clerk

See B B 24 - page 10
 Virginia Blanchard
 Notary Public



PINE DELL LAND COMPANY
 VIRGINIA
 May 1927

Recorded June 6, 1928
 in
 B B 14, p 236-7-8

St. GEORGE PROPERTY

We hereby certify that this map is a
 platting of Pine Dell Land Company, Inc.
 intended to be recorded with attached lease.

Attest:
 John F. Wells
 Secretary