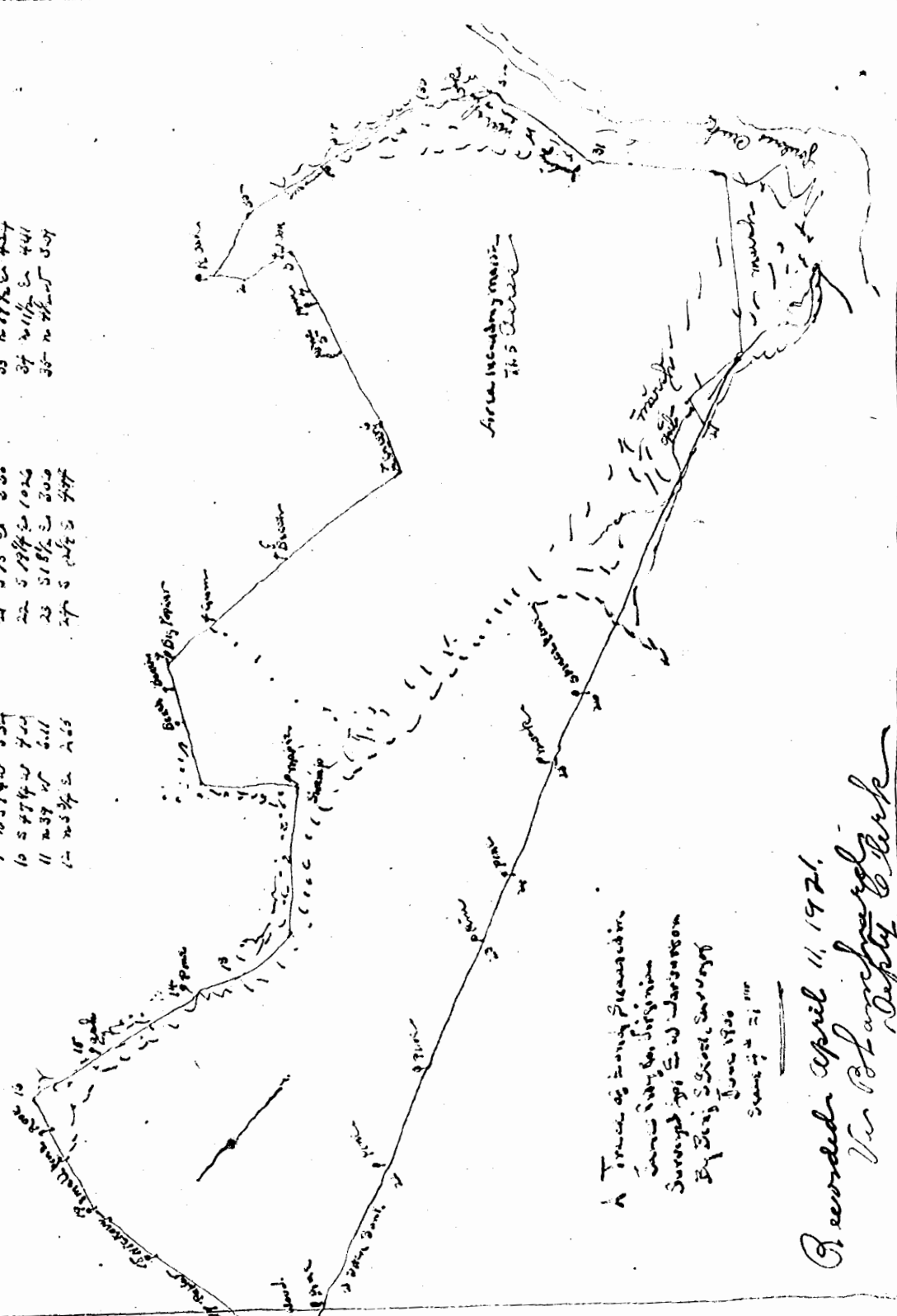
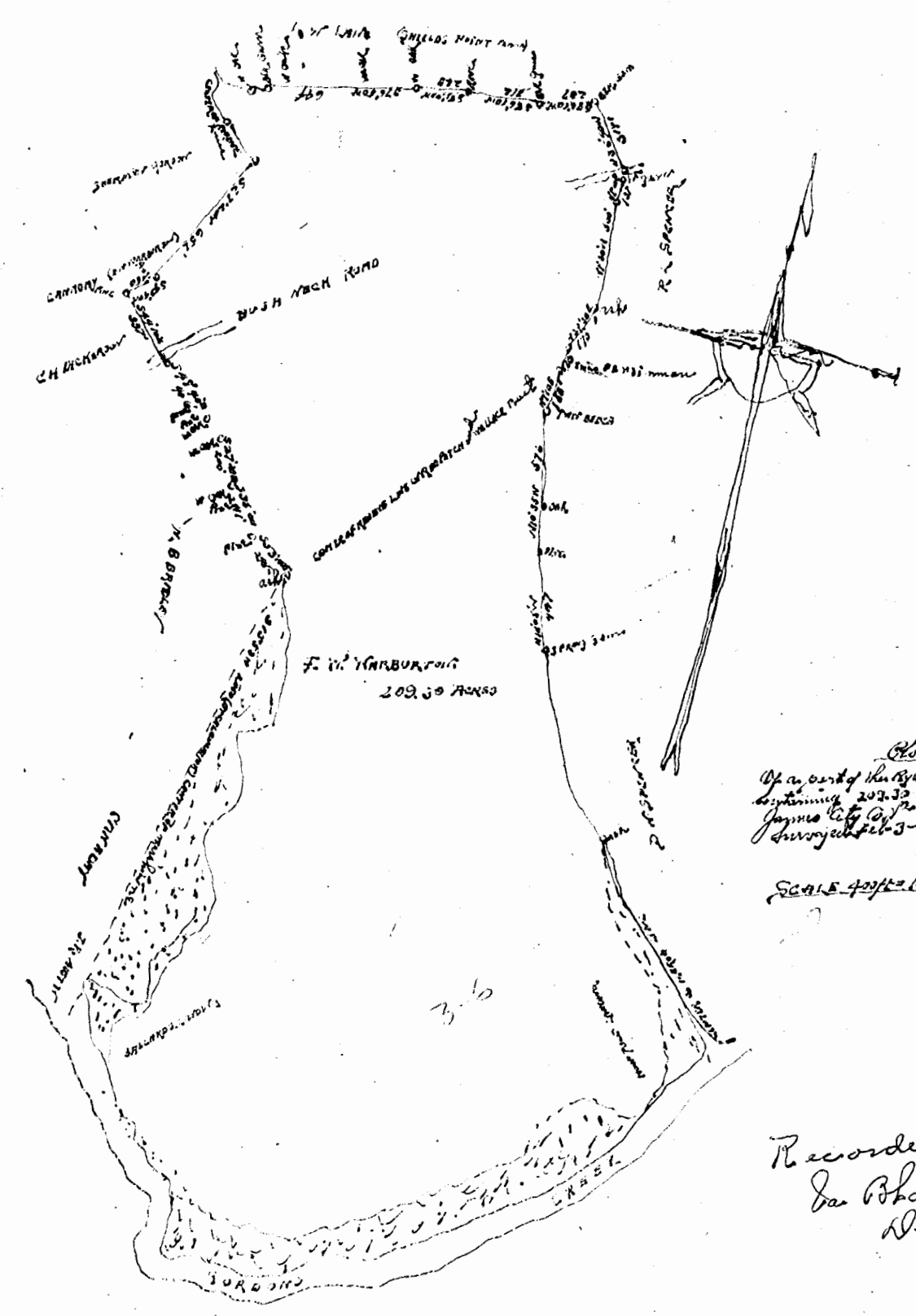


The Bearing	Dist	The Bearing	Dist
1	5 1/2	1	5 1/2
2	5 1/4	2	5 1/4
3	5 1/2	3	5 1/2
4	5 1/4	4	5 1/4
5	5 1/2	5	5 1/2
6	5 1/4	6	5 1/4
7	5 1/2	7	5 1/2
8	5 1/4	8	5 1/4
9	5 1/2	9	5 1/2
10	5 1/4	10	5 1/4
11	5 1/2	11	5 1/2
12	5 1/4	12	5 1/4
13	5 1/2	13	5 1/2
14	5 1/4	14	5 1/4
15	5 1/2	15	5 1/2
16	5 1/4	16	5 1/4
17	5 1/2	17	5 1/2
18	5 1/4	18	5 1/4
19	5 1/2	19	5 1/2
20	5 1/4	20	5 1/4
21	5 1/2	21	5 1/2
22	5 1/4	22	5 1/4
23	5 1/2	23	5 1/2
24	5 1/4	24	5 1/4
25	5 1/2	25	5 1/2
26	5 1/4	26	5 1/4
27	5 1/2	27	5 1/2
28	5 1/4	28	5 1/4
29	5 1/2	29	5 1/2
30	5 1/4	30	5 1/4
31	5 1/2	31	5 1/2
32	5 1/4	32	5 1/4
33	5 1/2	33	5 1/2
34	5 1/4	34	5 1/4
35	5 1/2	35	5 1/2
36	5 1/4	36	5 1/4
37	5 1/2	37	5 1/2
38	5 1/4	38	5 1/4
39	5 1/2	39	5 1/2
40	5 1/4	40	5 1/4
41	5 1/2	41	5 1/2
42	5 1/4	42	5 1/4
43	5 1/2	43	5 1/2
44	5 1/4	44	5 1/4
45	5 1/2	45	5 1/2
46	5 1/4	46	5 1/4
47	5 1/2	47	5 1/2
48	5 1/4	48	5 1/4
49	5 1/2	49	5 1/2
50	5 1/4	50	5 1/4



A Tract of land situated in
 the City of St. Louis
 Surveyed by E. W. Harburt
 By E. W. Harburt, Surveyor
 June 1850
 Section 10

Recorded April 11, 1921.
 Va. Blanchard
 Deputy Clerk



Plot
 Of a part of the City of St. Louis
 containing 209.50 acres situated in
 James City Co. Va. on Indian Creek
 Surveyed by E. W. Harburt
 A. G. Edwards, Surveyor
 Newport News Va.

SCALE 400 FT. = 1 IN.

Recorded Apr 11, 1921.
 Va. Blanchard
 Deputy Clerk

