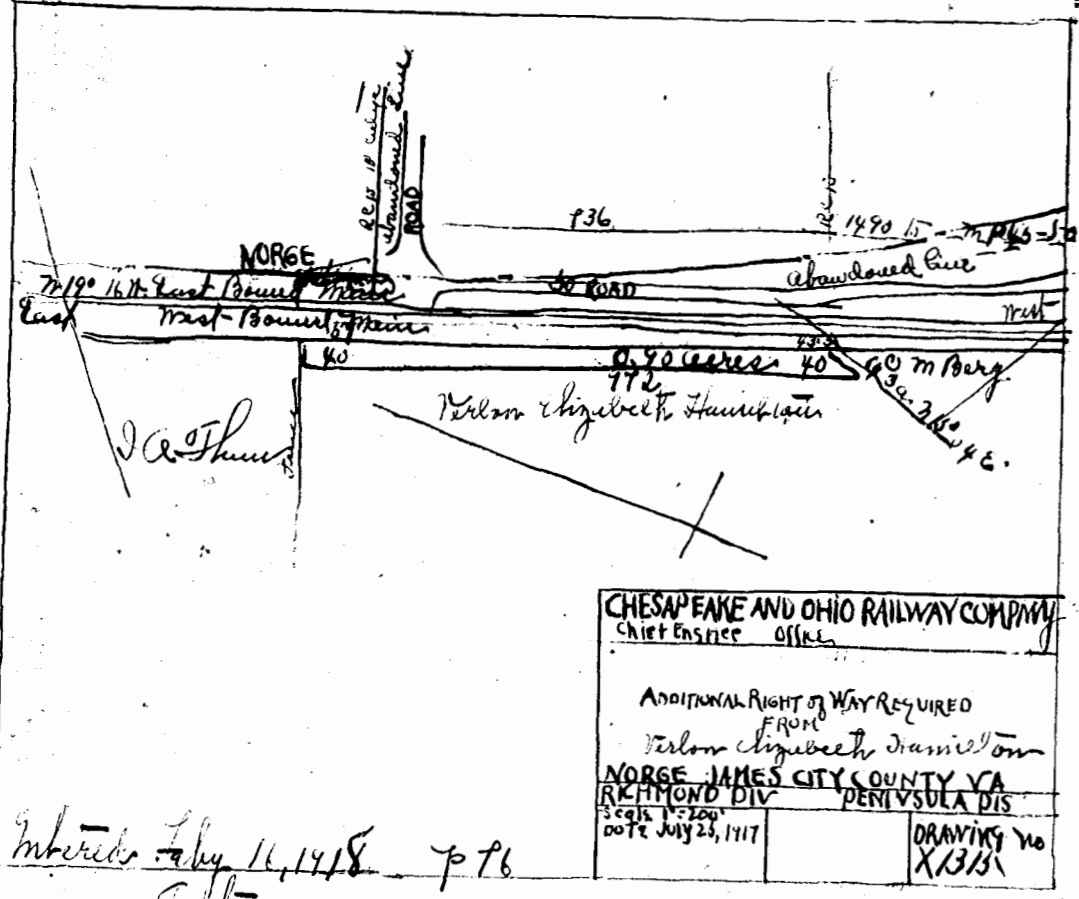
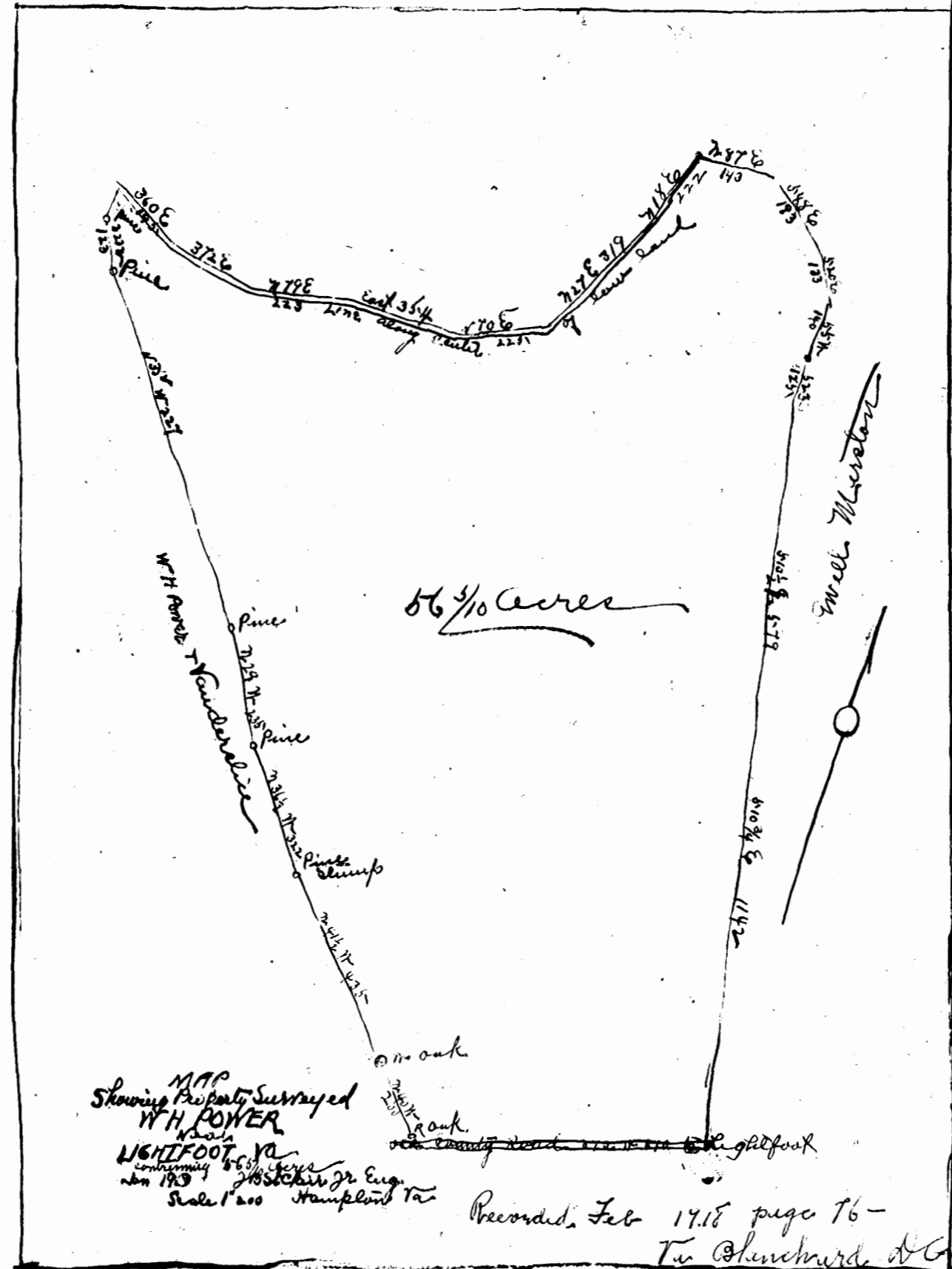


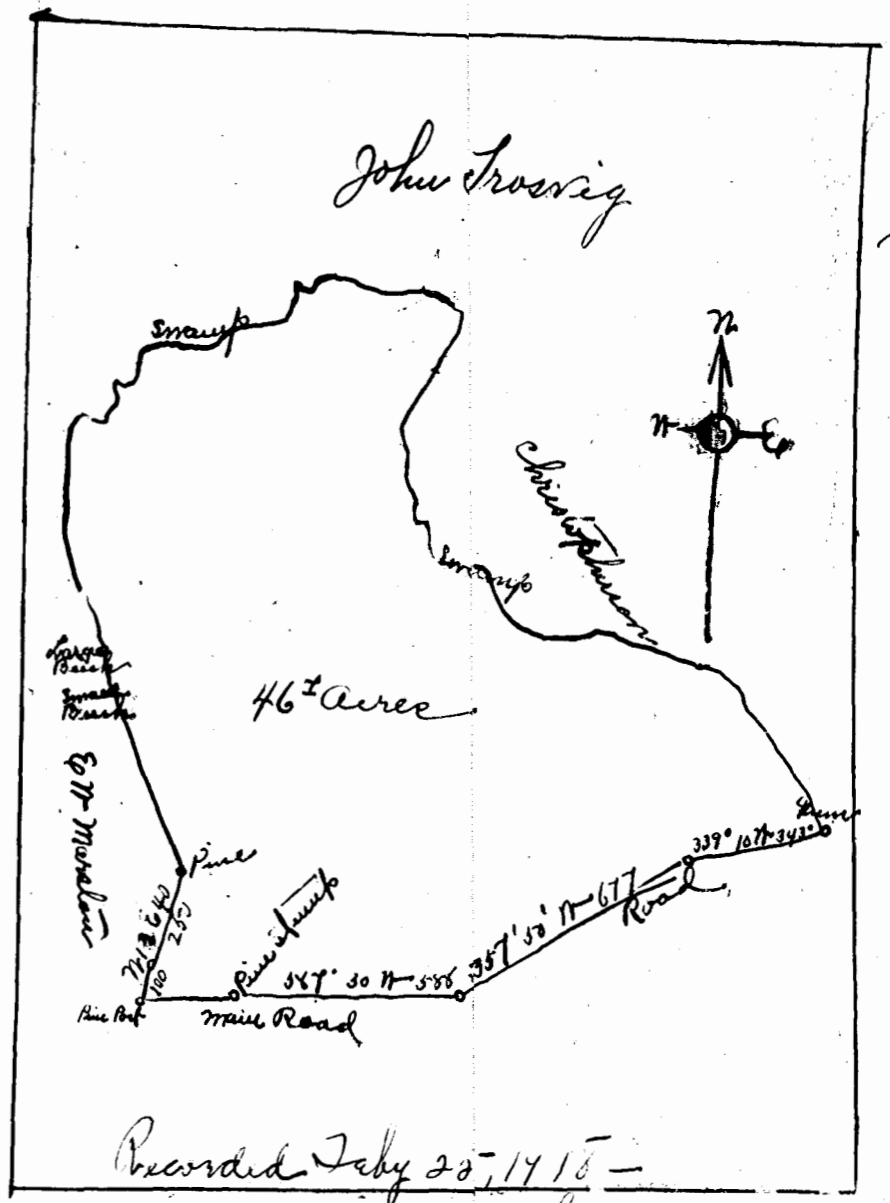
Entered May 24, 1917.
 Teste
 Wm. Chumard, D.C.
 See D.B. No 17, p 200



Entered July 11, 1918 p 76
 Teste
 Virginia Chumard
 Capt Clerk



MAP
 Showing Property Surveyed
W.H. POWER
 Lightfoot
 56 ³/₁₀ Acres
 Jan 1918
 Scale 1" = 200'
 Recorded, Feb 1918 page 76 -
 Wm. Chumard, D.C.



Recorded July 20, 1915 -
 Wm. Chumard
 Capt Clerk

