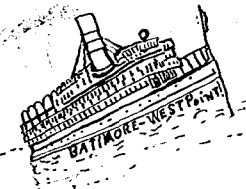


Recorded 9-20-14  
 in Gloucest. Co. Va.  
 49

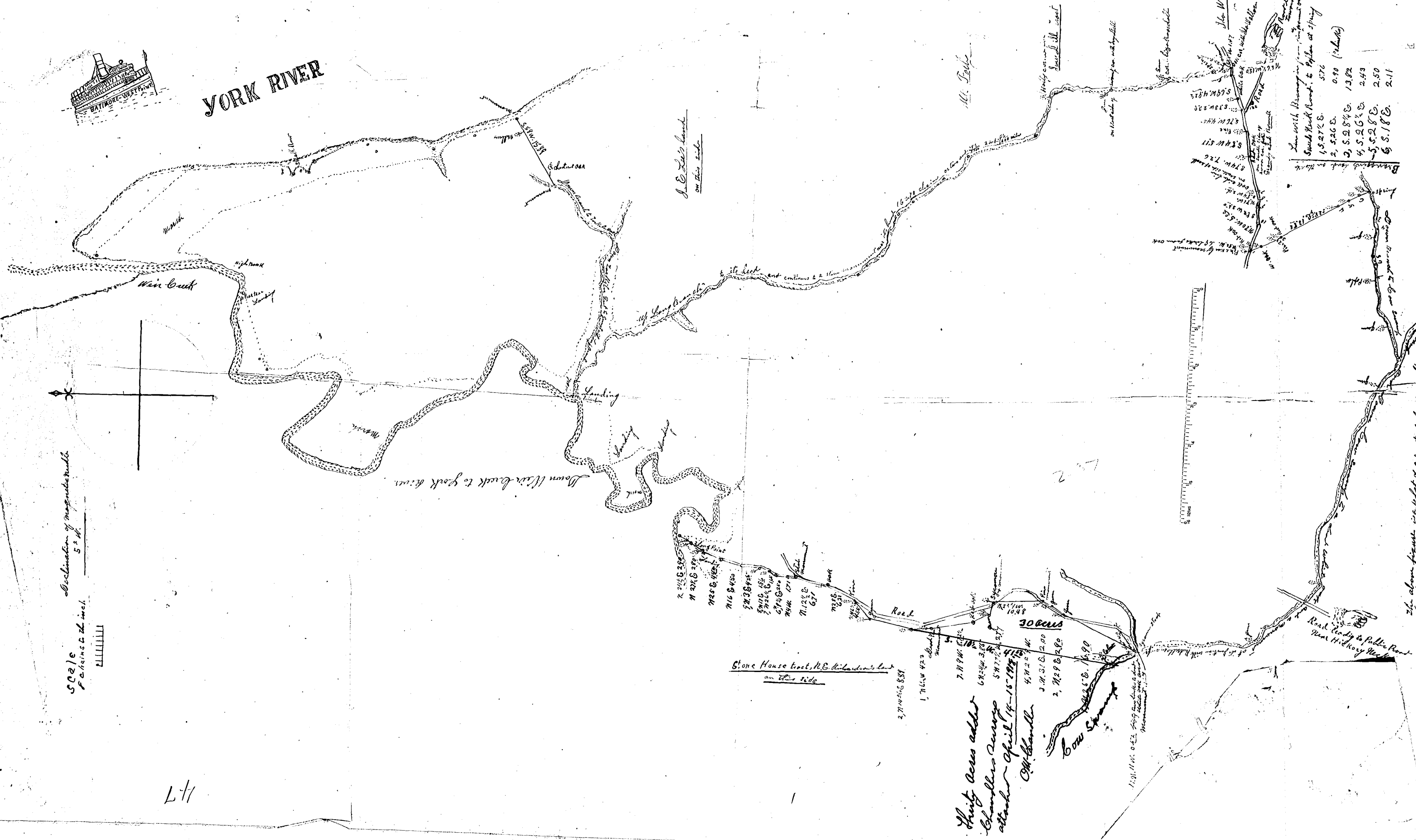


# YORK RIVER

Scale  
 1 inch = 5 miles  
 Declination of magnetic needle



177



J. E. Lee's land  
 on this side

Stone House tract, R. E. Kilbuck's land  
 on this side

Thirty Acres added  
 Charles Sewing  
 attached April 14-15-1895  
 O. Chandler

Cox Spring



Bearings and Distances	
15.272 E.	576
2, 226 E.	0.90 (1/2 mile)
2, 52.8 1/2 E.	13.82
4, 52.6 1/2 E.	2.43
5, 52.8 E.	2.50
6, 51.8 E.	2.11

The above figure is a lot of a tract of land in the Hunt District, James City County, Virginia, the property of Disraeli Park & Villa Co., and was surveyed by some of the agents of April 1917 and found to contain 150 acres of land and 181.20 ac. of marsh and woodland tract 7644.13 ac. O. Chandler Survey