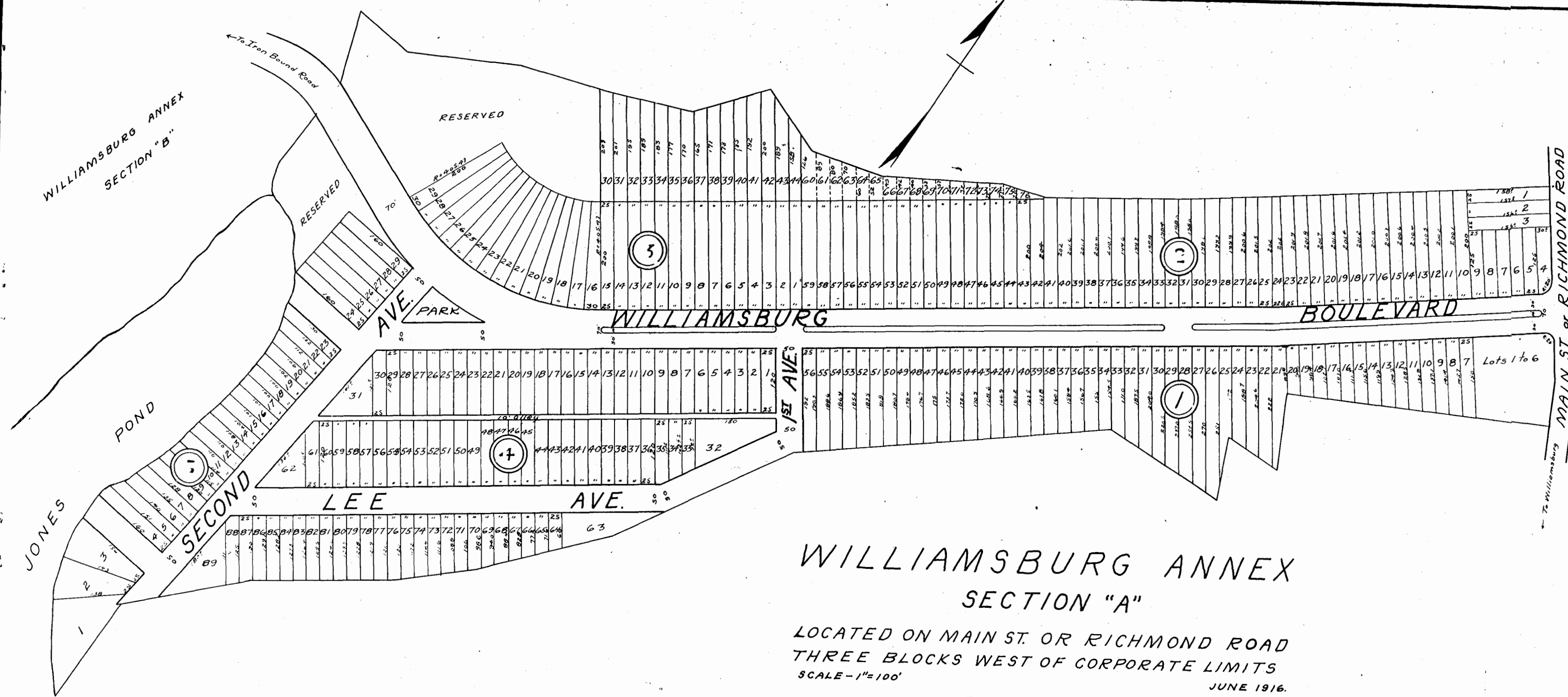


WILLIAMSBURG ANNEX
SECTION "B"



WILLIAMSBURG ANNEX
SECTION "A"

LOCATED ON MAIN ST. OR RICHMOND ROAD
THREE BLOCKS WEST OF CORPORATE LIMITS
SCALE - 1" = 100'
JUNE 1916.

PROPERTY OF
Annex Realty Corporation
McConnell & Russell
Civil Engineers
Williamsburg Richmond

2-38

