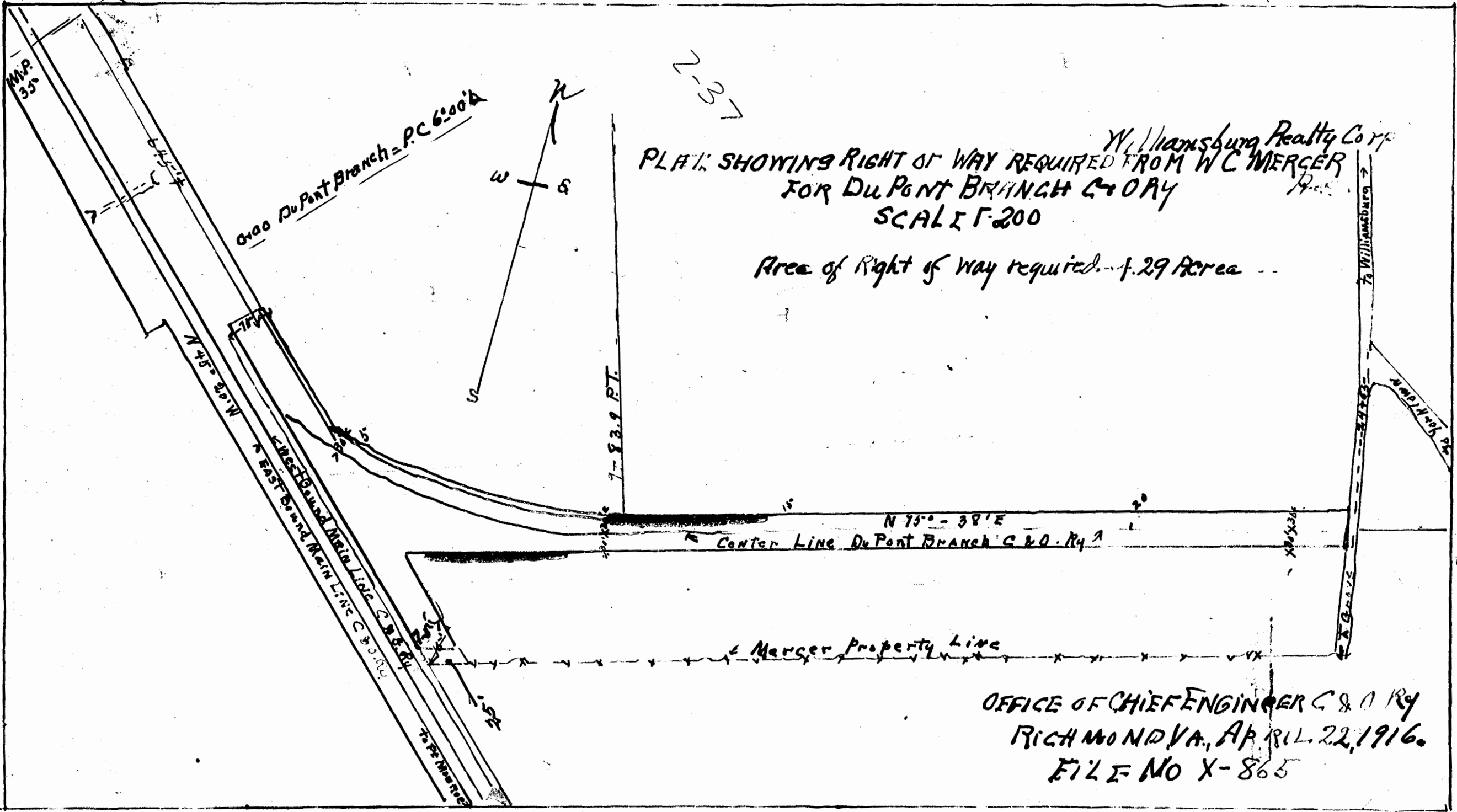


Williamsburg Realty Corp  
 PLAT SHOWING RIGHT OF WAY REQUIRED FROM W C MERCER  
 FOR DU PONT BRANCH C & O RY  
 SCALE 1" = 200'

Area of Right of Way required - 1.29 Area



OFFICE OF CHIEF ENGINEER C & O Ry  
 RICHMOND VA., APRIL 22, 1916.  
 FILE NO X-865