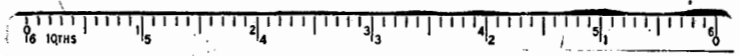
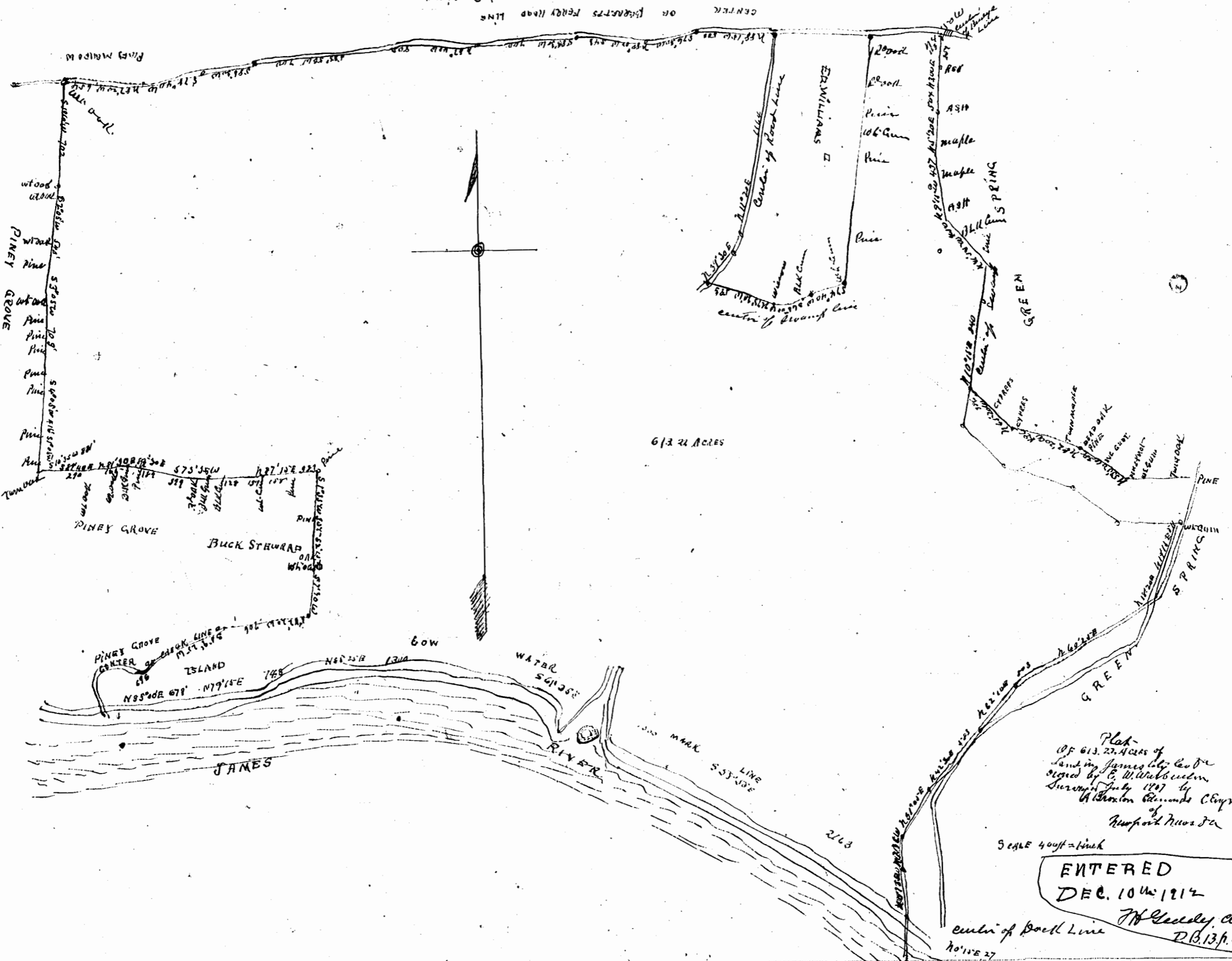


2-2

GREEN CENTER OR DISTRICTS FERRY ROAD LINE SPRING



Plat
 of 613.21 Acres of
 Land in James City Co Va
 owned by E. W. Webb et al
 Surveyed July 1897 by
 A. Horton Edmunds Chypr
 of Newport News Va

SCALE 40ft = inch

ENTERED
 DEC. 10th 1912

J. H. Seelye Clerk
 D.B. 13 p. 533