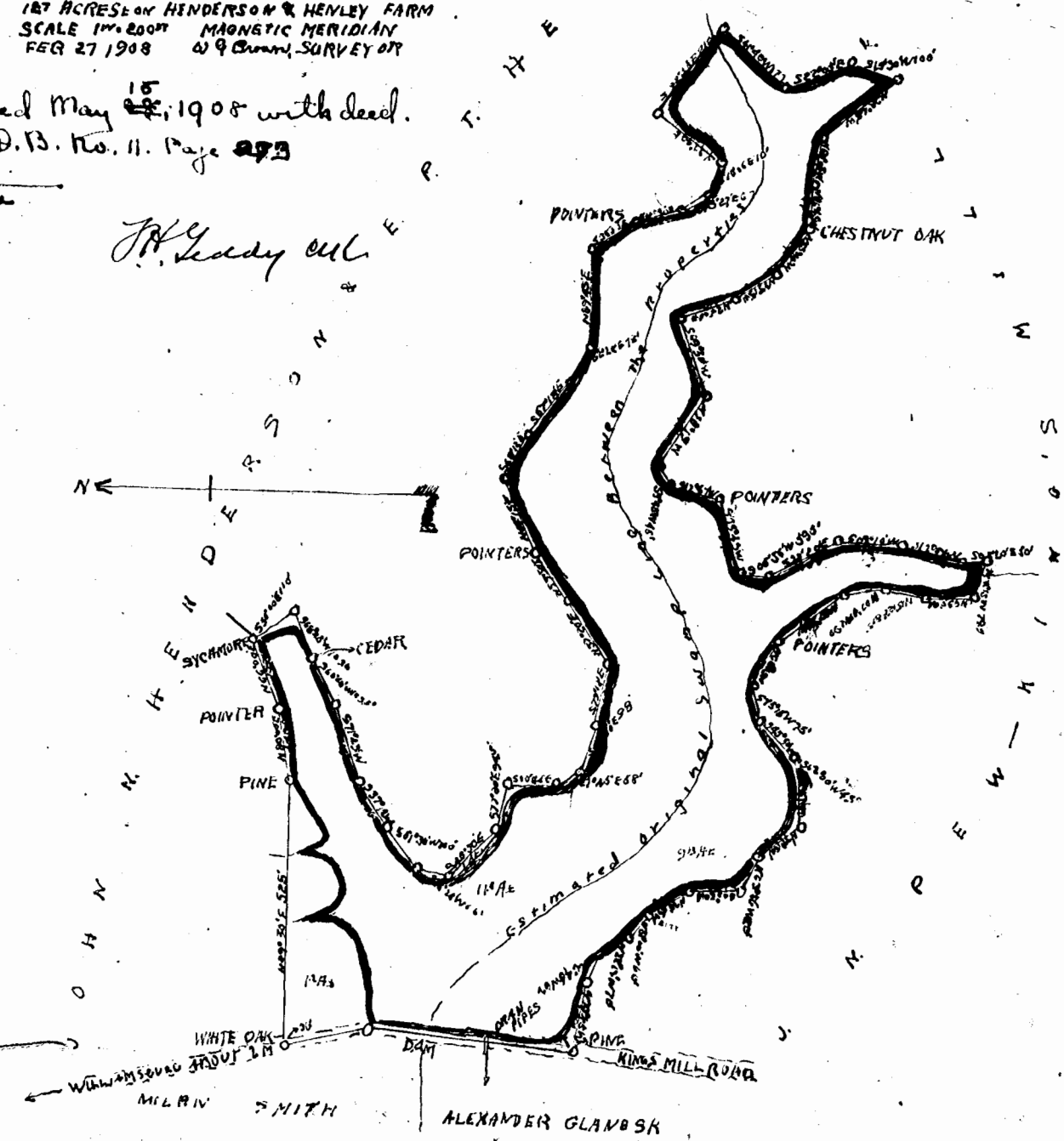


FLAT OF FISH POND
 ABOUT 2 MILES SOUTHWEST OF WILLIAMSBURG
 IN JAMES CITY CO., VA.
 9.0 ACRES ON KING'S MILL FARM
 187 ACRES ON HENDERSON & HENLEY FARM
 SCALE 1" = 200 FT MAGNETIC MERIDIAN
 FEB 27 1908 W. G. CURRY, SURVEYOR

Recorded May 15, 1908 with deed.
 See D.B. No. 11, Page 273
 Juste

J.H. Gaddy, civil



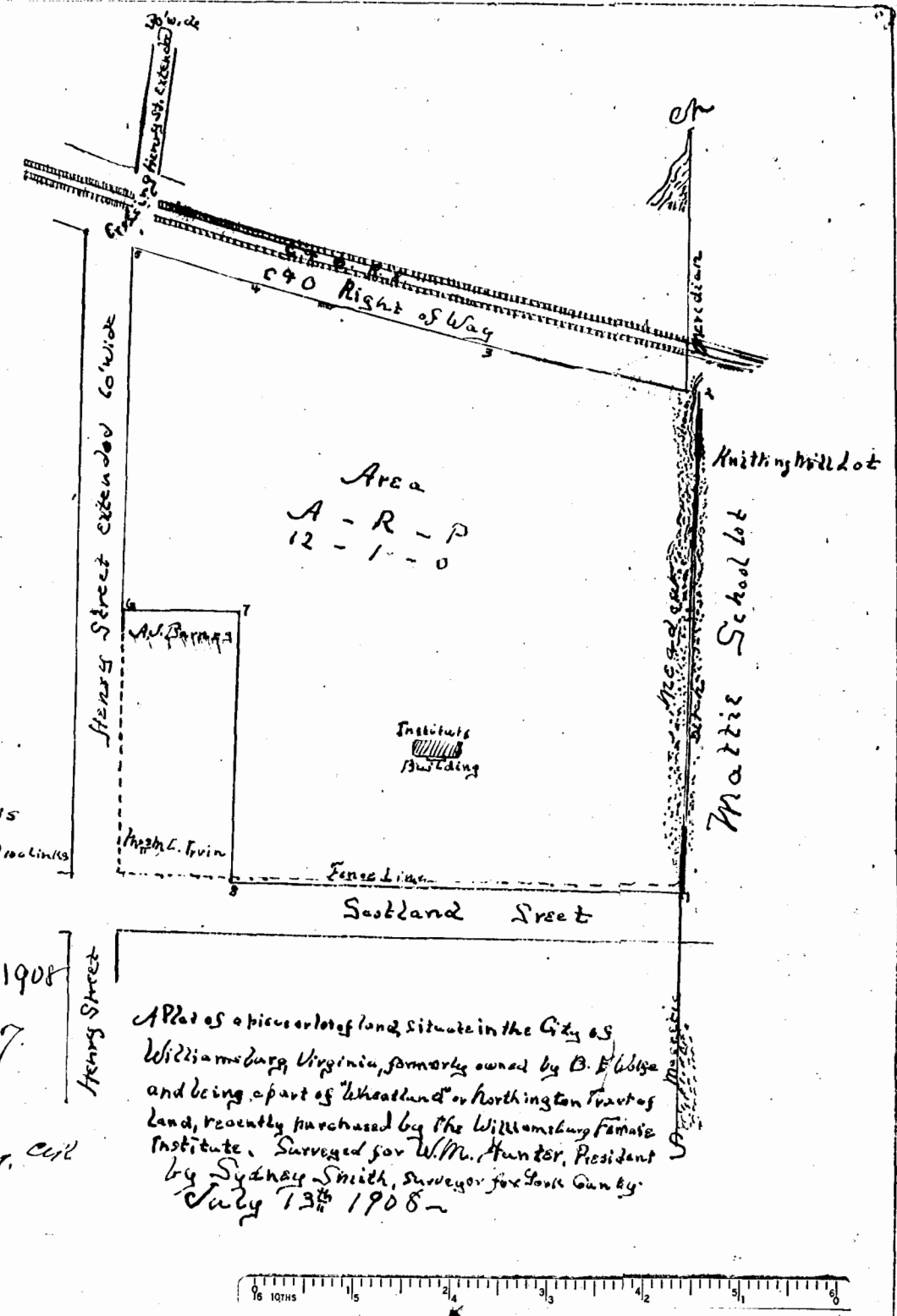
Field Notes

St. Bear	Dist.
1 N 12 E	10.18
2 N 27 W	4.58
3 N 76 W	4.95
4 N 74 W	2.55
5 S 74 W	7.39
6 N 89 E	2.37
7 S 12 W	5.53
8 S 89 E	9.54

Scale
 Two chains = one inch
 Chain used in making this
 Survey 66 feet long & contained 100 links

Recorded July 17, 1908
 See D.B. No. 6, Page 267
 Juste

J.H. Gaddy, civil



A Plot of a piece or lot of land situate in the City of
 Williamsburg, Virginia, formerly owned by B. F. Wolfe
 and being a part of "Wheatland" or Northington Tract of
 Land, recently purchased by the Williamsburg Farmers
 Institute. Surveyed for W. M. Hunter, President
 by Sydney Smith, Surveyor for Louisa County.
 July 13th 1908

2-9