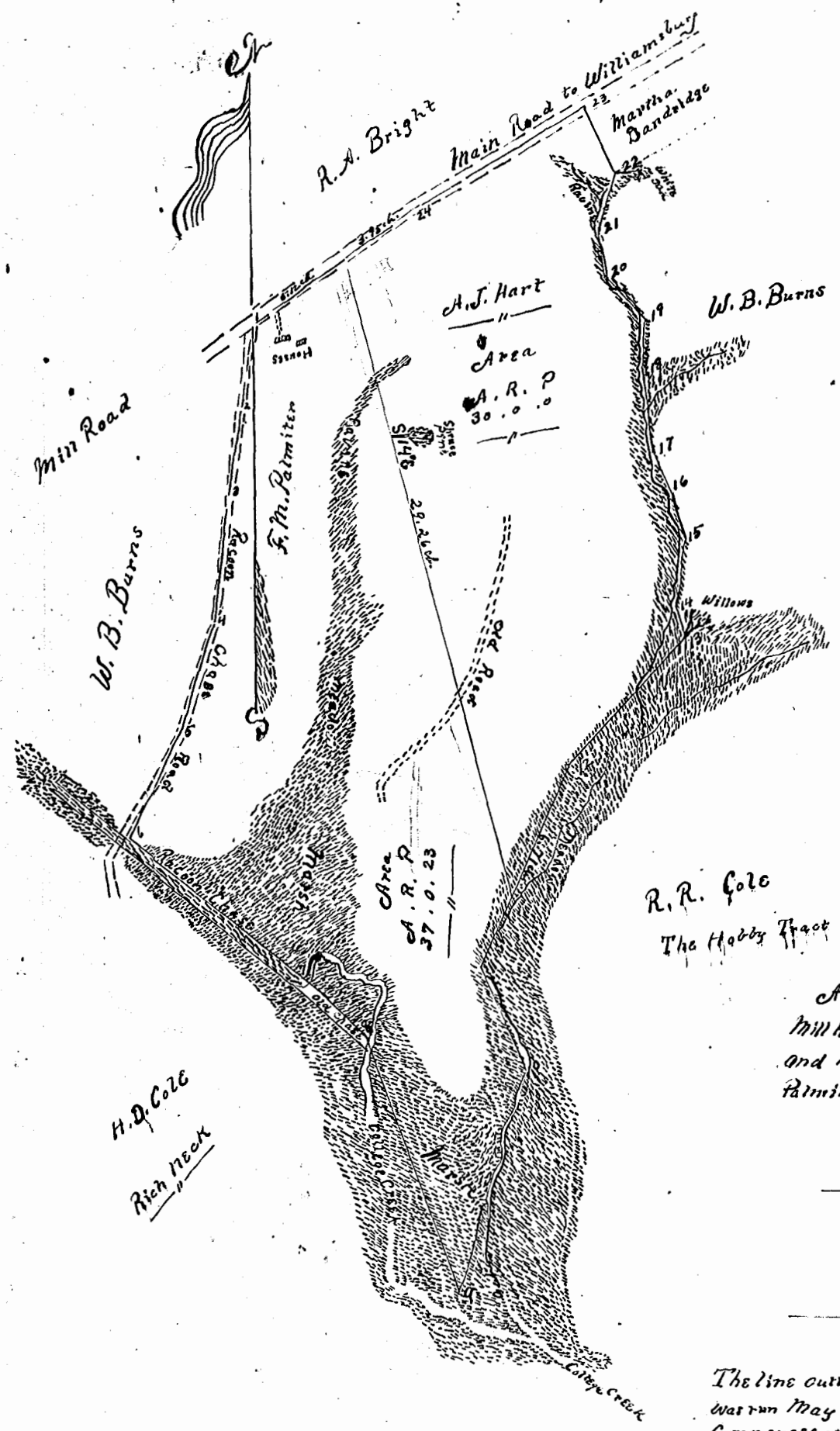


Sta	Bearing	Dist.	Rem.
1	S 8 1/2 W	3.73	Commences at a stake in the Main Road at its junction with the former Chase Road - runs down the center of the former Chase Road to the chase
2	S 10 1/2 W	3.70	
3	S 7 1/2 W	6.58	
4	S 18 W	5.03	
5	S 26 W	5.42	
6	S 5 1/2 E	9.69	
7	S 46 1/2 E	4.15	
8	S 19 1/2 E	12.20	
9	N 17 1/2 E	10.37 1/2	
10	N 23 W	4.89 1/2	
11	N 25 E	10.07 1/2	
12	N 43 1/2 E	7.53	
13	N 17 W	1.32	
14	N 8 1/2 E	3.13 1/2	
15	N 18 1/2 W	2.15	
16	N 25 W	1.94	
17	N 6 W	3.68	
18	N 3 E	2.19	
19	N 42 W	2.50	
20	N 7 W	2.04	
21	N 17 E	2.63	
22	N 24 W	3.26	
23	S 60 W	8.86	In centre of Main Road
24	S 5 1/2 W	9.07	



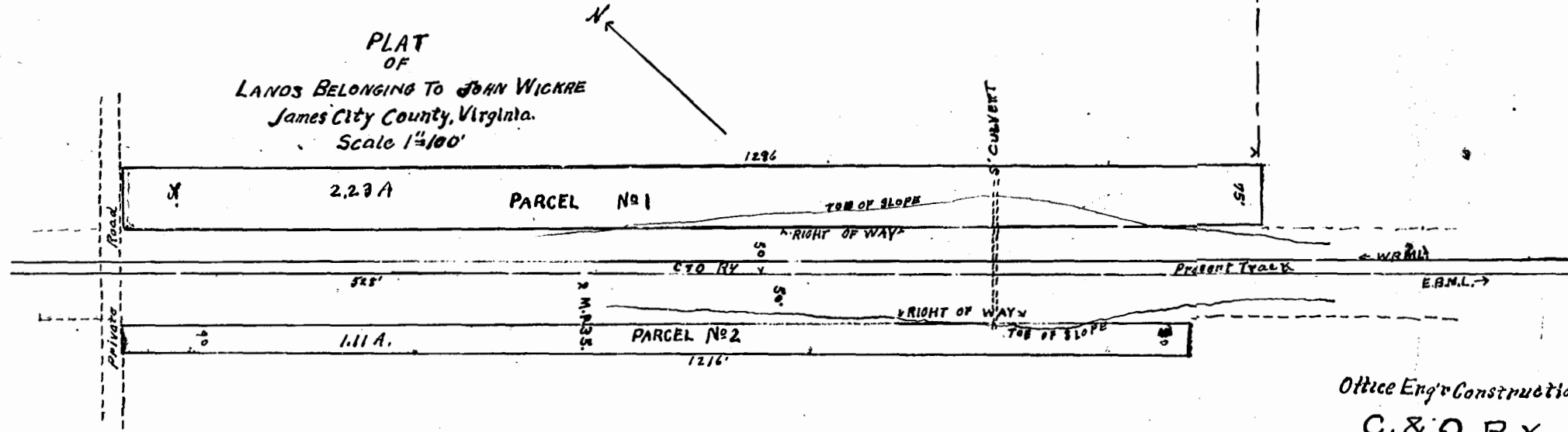
Scale  
Four chains to one inch

R.R. Cole  
The Hobby Tract

A Plat of a Tract of Land, situate East of the College Mill Hill, James town District, James City County, Virginia and known as the Brook's Land, but renowned by E.M. Palmer - Surveyed May 8<sup>th</sup> & 9<sup>th</sup> 1903  
by  
Sydney Smith, Surveyor

Area of the whole tract  
A. R. P.  
67. 6. 23

The line cutting off the 30 acres for A.J. Hart, was run May 12<sup>th</sup> 1903, in the forenoon, and commences at a stake in the Main Road 3.73 chains S 8 1/2 W of Station 24 - and end 6.13 chains S 25 1/2 W of Station 11



July 24<sup>th</sup> - 1903  
Sydney Smith

Office Eng'r Construction  
C. & O. RY  
Richmond, Va. 4-30, 1903.  
FILE No. 2206.

