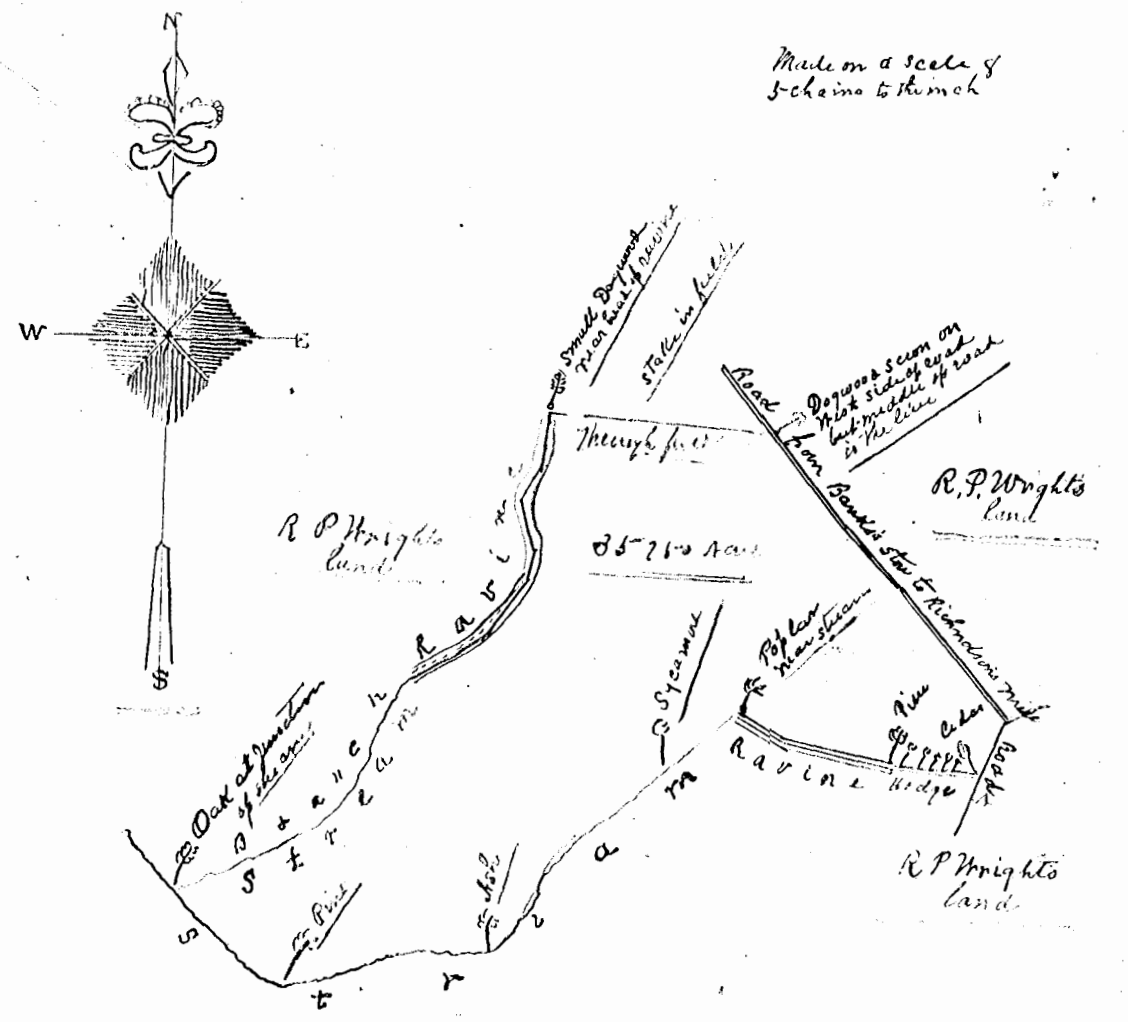


The above plot represents 58.66 acres of land belonging to the estate of William Byrd purchased by the John St. Barnes from the Commissioners as a sale of "residuous lands". It was conveyed to said estate in charge of said land to attain a deed for same given under my hand March 18th 1701.

R. A. Feltus
 Surveyor by appointment of
 County Court of
 James City Va.

Deed recorded July 8th 1901 Deed Book No. 7.
 page 623 for James City County
 J. A. Gaddy



The above figure represents a piece of land lying in James City County about five miles from Spans and on the coast leading from Paul's store to Richardsons Mill which I surveyed for Charles Foster who purchased of R. P. Wright by request of said Wright and former contains 35 1/4 acres bounded as follows, Beginning at a cedar tree on the road and running from the middle of said road along a cedar tree to 8 1/4 the 1/4 chains to a Pinus head of ravine thence running along said ravine in a westerly course 7.10 chains to a Poplar tree on a stream thence along said stream as it meanders 31.0 chains to a small sand fall at mouth of branch. thence along said branch as it meanders 12.69 chains to its head thence along ravine as it meanders 15.32 chains to a small Dogwood near head of ravine and then feet thence along side of woods N 88 1/4 E 160 chains thence through feet S 85 1/4 E 2.12 chains to a stake thence S 85 1/4 E 6.30 chains to the middle of the road thence along middle of road as it meanders 18 1/2 chains to where it joins another road thence along this road S 28 1/2 E 2.28 chains to post beyond.

D. 1701
 Geo. A. Cheslane & C. S.

July 28th 1902
 J. A. Gaddy, Surveyor

