

Field Notes-

No.	Bear-	Dist.	Remarks
1	S 52 E	2.67	
2	N 108 E	2.40	
3	N 87 E	22.45 1/2	
4	N 74 E	18.37	Hubbard's land
5	N 74 E	5.52	
6	N 74 E	4.08	
7	S 43 E	4.63	Hubbard's land
8	S 77 E	2.42	at mill
9	N 61 E	1.74 1/2	
10	N 16 E	4.68	
11	N 66 1/2 E	1.82	
12	N 58 1/2 E	3.52	
13	N 14 1/2 E	3.18	Hubbard's land
14	N 41 W	6.40	
15	N 9 E	4.05 1/2	
16	N 4 E	6.09 1/2	
17	N 34 W	6.06	
18	N 2 1/2 W	2.81	
19	N 13 1/2 E	4.21	An old fence ditch
20	N 4 1/2 E	20.19	Hubbard's land
21	N 54 E	7.00 1/2	at mill
22	N 17 E	3.82	
23	N 53 1/2 E	3.58 1/2	
24	N 83 E	4.26	
25	N 63 W	4.60	
26	N 77 1/2 W	10.29	
27	N 75 W	11.37	
28	S 3 E	34.32	
29	S 71 1/2 E	26.98	
30	N 63 W	2.83	
31	S 76 W	4.27	
32	N 68 W	5.51	
33	S 34 W	3.36	
34	S 78 W	4.45	
35	N 32 1/2 W	4.09	
36	N 80 W	4.87	
37	N 77 W	4.50	
38	N 85 W	4.44	
39	N 60 W	2.68	
40	N 40 W	3.83	
41	N 72 W	3.71	
42	S 76 W	2.33	
43	N 85 1/2 W	2.53 1/2	
44	S 87 1/2 W	1.55	
45	S 87 W	3.48	
46	S 43 W	3.09	
47	S 1 1/2 E	3.06	
48	S 17 1/2 W	3.80	
49	S 2 1/2 E	1.82	
50	S 18 1/2 W	2.69	
51	S 12 1/2 W	1.94	

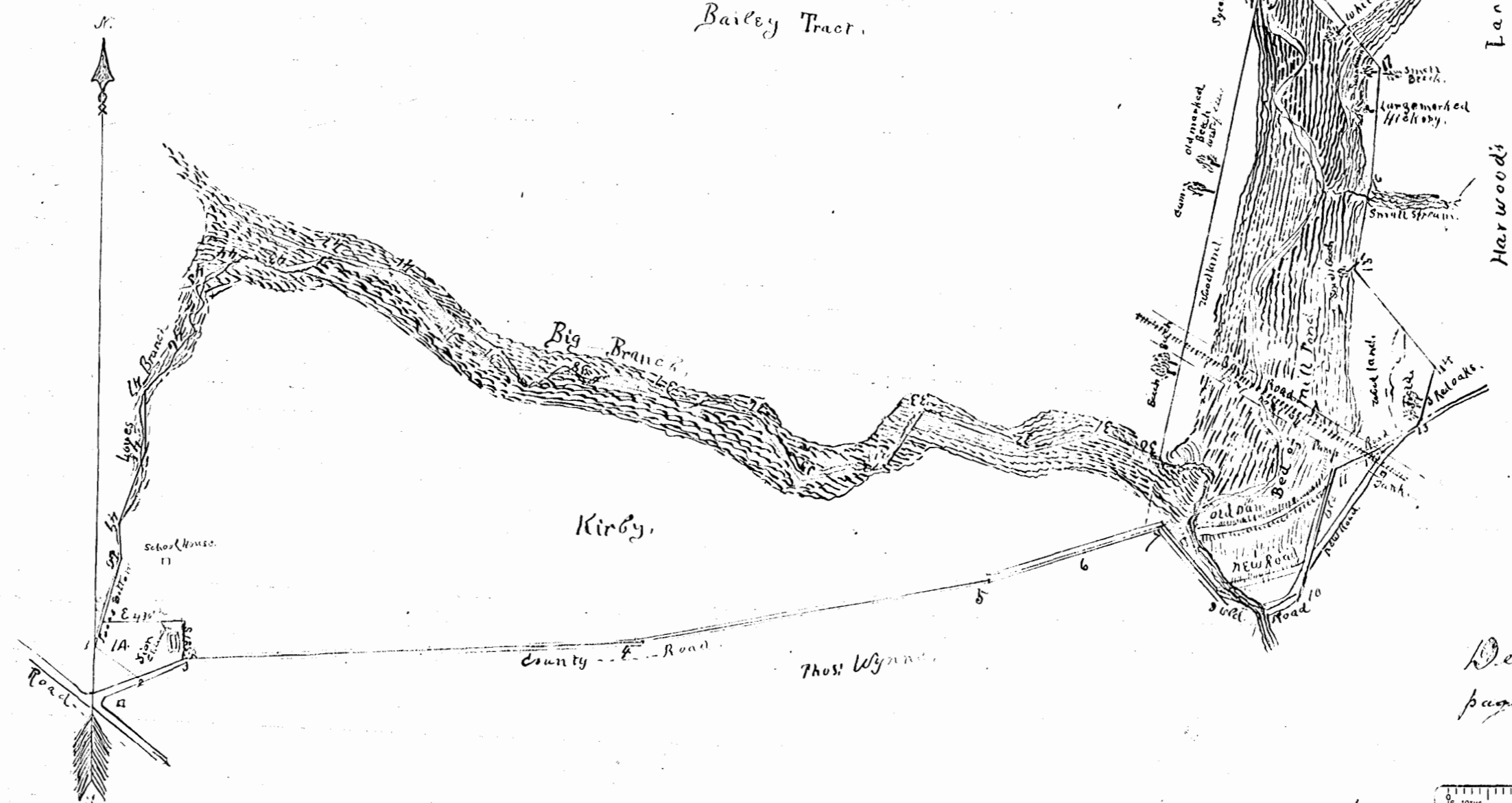
# Plat of Kirby Tract and Blows Mill Pond

Made By Sydney Smith  
Surveyor  
Surveyed July 18<sup>th</sup> to 24<sup>th</sup> inclusive 1900

Scale Four chains to an inch

Area  
A - R - P  
107.3 - 04  
From this area must be  
deducted the following  
Portion church 1 A or 000  
" C. & O. R.R. 2 - 1 - 21  
Portion Blows Mill Pond 1 - 1 - 21  
Leaving for Kirby's Mill Pond 104 - 1 - 23

Dick Wynne,  
now owned  
by  
Milan H. Smith.



Deed recorded book no 7  
page 410 - Dec. 10<sup>th</sup> 1900.  
J. H. Gaddy, Clerk

