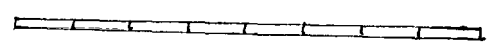


A plat of the Matly School Property  
Made by Sydney Smith, Surveyor.  
June 20<sup>th</sup> 1900.

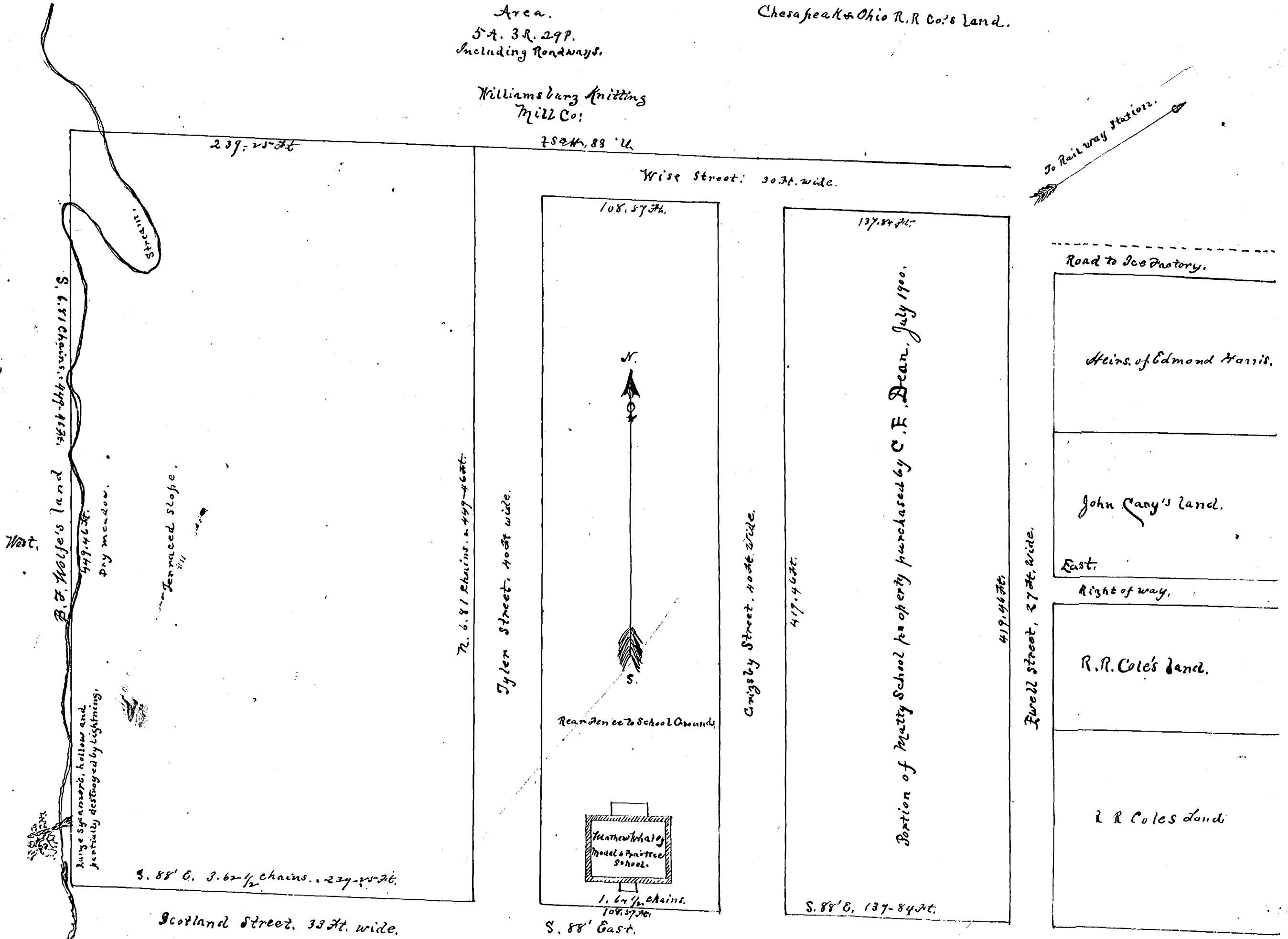
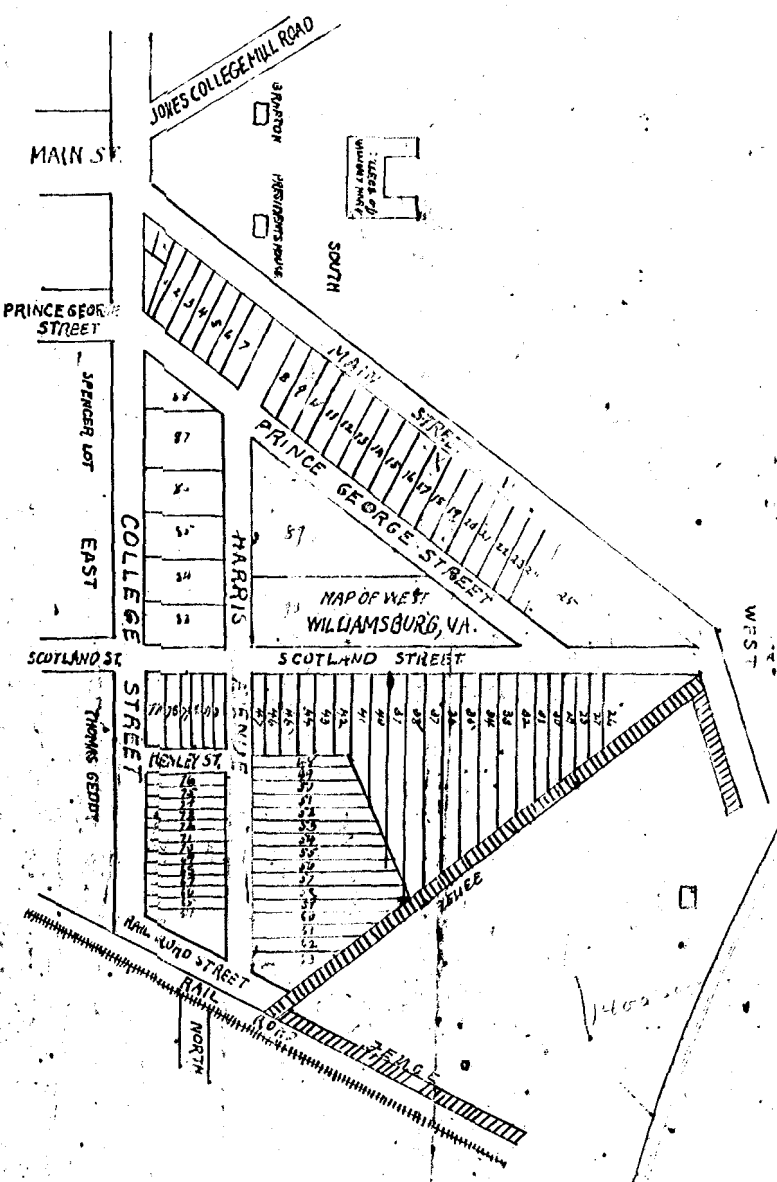
Scale,  $\frac{1}{8}$  chains to two inches.



Area.  
5 A. 3 R. 29 P.  
Including Roadways.

Williamsburg Knitting  
Mill Co;

Chesapeake & Ohio R.R. Co.'s Land.



To Railway Station.

Road to Ice Factory.

Heirs of Edmond Harris.

John Cary's Land.

R.R. Coles Land.

R R Coles Land

Just  
J. A. Seddy, Clerk

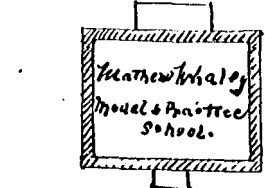
B. F. Wolfe's land

Large sycamore, hollow and  
partially destroyed by lightning.

S. 88' E. 3.62 1/2 chains = 239-25 ft.

Scotland Street, 33 ft. wide.

Just  
J. A. Seddy Clerk  
8-3-1900



1.64 1/2 chains  
108.57 ft.  
S. 88' East.

PALACE GREEN.

Scotland Street, 66 ft. wide.

Deed Book No 3 p 1134  
Williamsburg