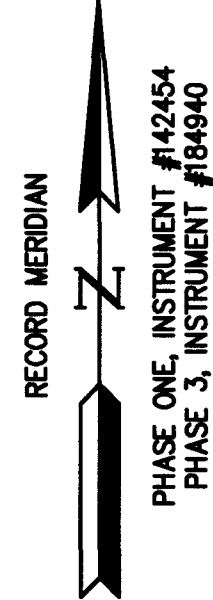
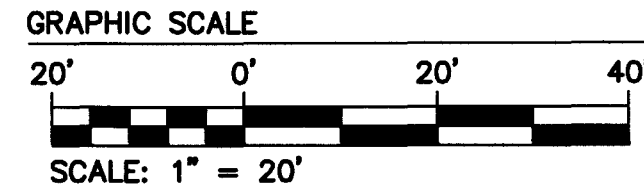
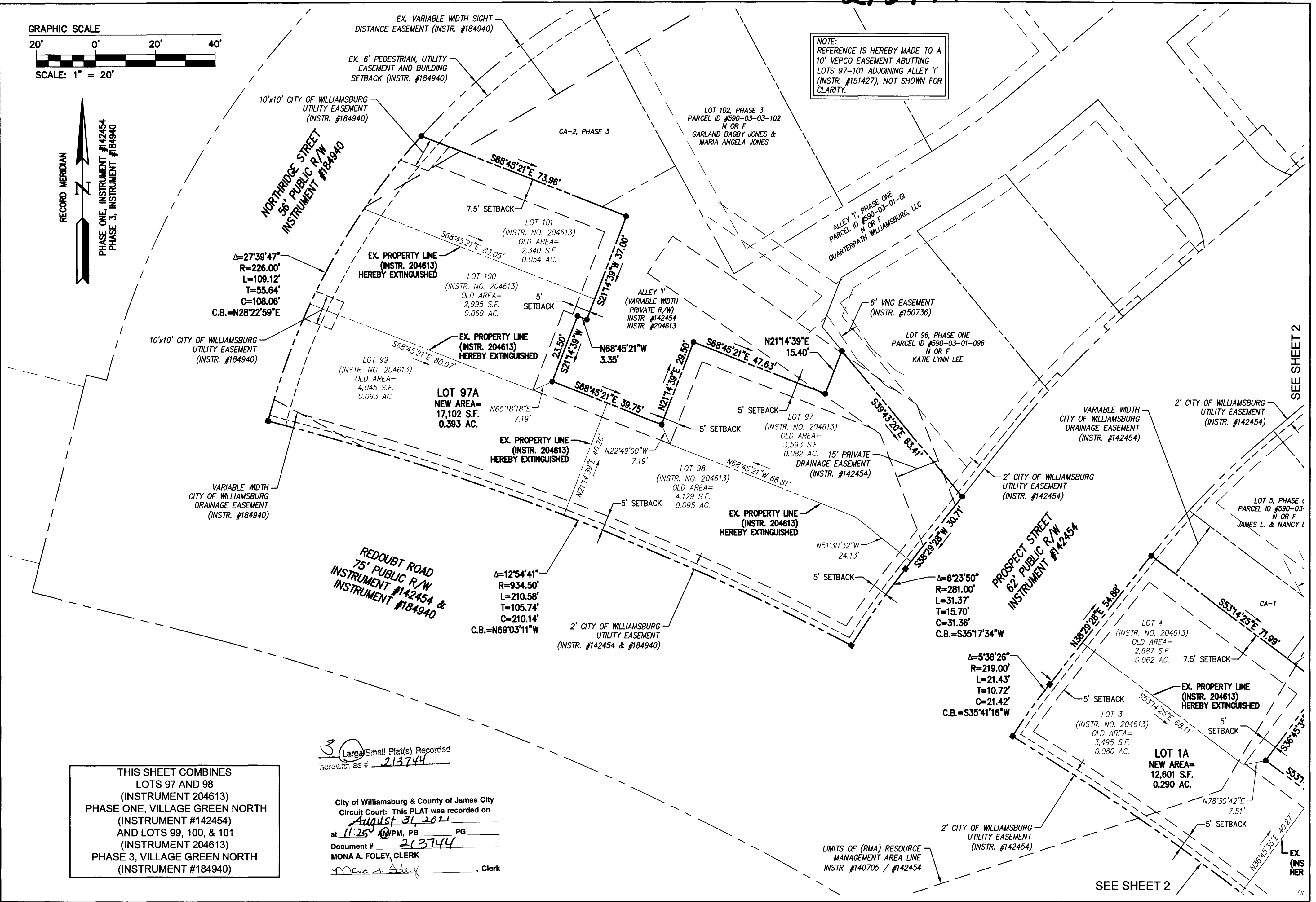


213744



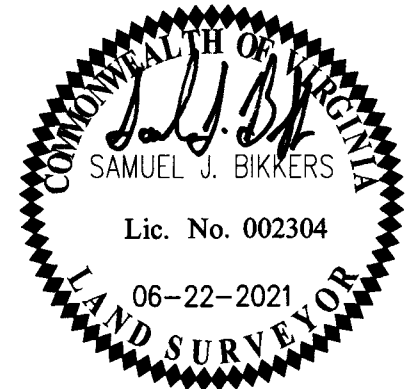
NOTE: REFERENCE IS HEREBY MADE TO A 10' VEPCO EASEMENT ABUTTING LOTS 97-101 ADJOINING ALLEY 'Y' (INSTR. #151427), NOT SHOWN FOR CLARITY.



THIS SHEET COMBINES LOTS 97 AND 98 (INSTRUMENT 204613) PHASE ONE, VILLAGE GREEN NORTH (INSTRUMENT #142454) AND LOTS 99, 100, & 101 (INSTRUMENT 204613) PHASE 3, VILLAGE GREEN NORTH (INSTRUMENT #184940)

3 Large Small Plat(s) Recorded herewith as # 213744  
City of Williamsburg & County of James City Circuit Court: This PLAT was recorded on August 31, 2021 at 11:25 AM, PB PG Document # 213744 MONA A. FOLEY, CLERK

Rev.	Date	Description	Revised By



**AES** CONSULTING ENGINEERS  
5248 Olde Towne Road, Suite 1  
Williamsburg, Virginia 23188  
Phone: (757) 253-0040  
Fax: (757) 220-8994  
www.aesva.com  
Hampton Roads | Central Virginia | Middle Peninsula

PLAT SHOWING LOT LINE EXTINGUISHMENTS BETWEEN LOTS 1, 2, 3, 4 AND LOTS 97, 98, 99, 100, 101 PHASE ONE AND PHASE 3, VILLAGE GREEN NORTH, TOWNHOMES AT QUARTERPATH BEING THE PROPERTY OF QUARTERPATH WILLIAMSBURG, LLC CITY OF WILLIAMSBURG VIRGINIA

Project Contacts:	GVC / SJB
Project Number:	W10219-01A
Scale:	1" = 20'
Date:	06-22-2021
Sheet Number	3 OF 3