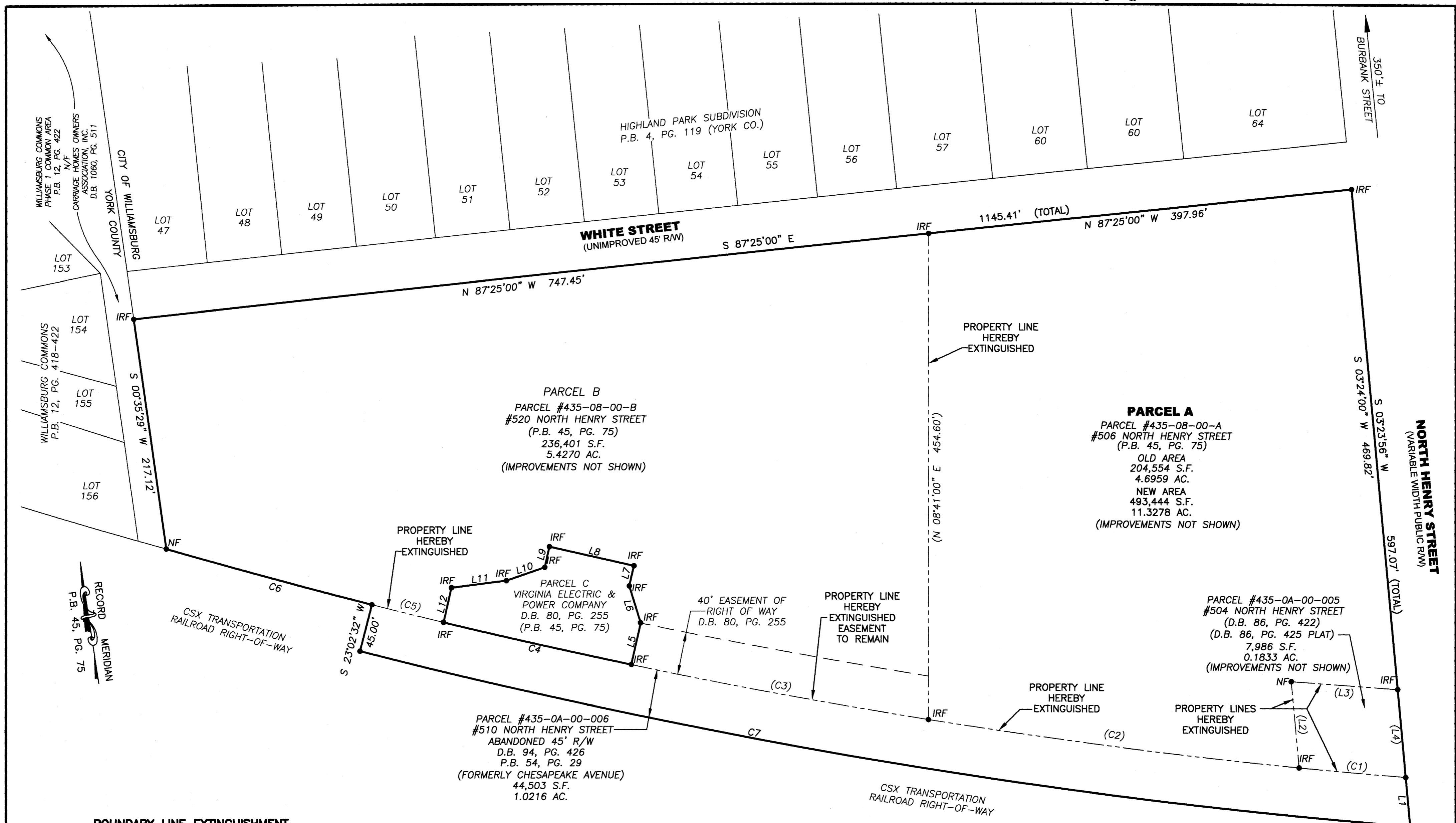


213042



PARCEL B
 PARCEL #435-08-00-B
 #520 NORTH HENRY STREET
 (P.B. 45, PG. 75)
 236,401 S.F.
 5.4270 AC.
 (IMPROVEMENTS NOT SHOWN)

PARCEL A
 PARCEL #435-08-00-A
 #506 NORTH HENRY STREET
 (P.B. 45, PG. 75)
 OLD AREA
 204,554 S.F.
 4.6959 AC.
 NEW AREA
 493,444 S.F.
 11.3278 AC.
 (IMPROVEMENTS NOT SHOWN)

PARCEL #435-0A-00-006
 #510 NORTH HENRY STREET
 ABANDONED 45' R/W
 D.B. 94, PG. 426
 P.B. 54, PG. 29
 (FORMERLY CHESAPEAKE AVENUE)
 44,503 S.F.
 1.0216 AC.

PARCEL #435-0A-00-005
 #504 NORTH HENRY STREET
 (D.B. 86, PG. 422)
 (D.B. 86, PG. 425 PLAT)
 7,986 S.F.
 0.1833 AC.
 (IMPROVEMENTS NOT SHOWN)

BOUNDARY LINE EXTINGUISHMENT
 PARCEL NO. 435-08-00-A,
 PARCEL NO. 435-08-00-B,
 PARCEL NO. 435-0A-00-005
 & PARCEL NO. 435-0A-00-006
 CITY OF WILLIAMSBURG, VIRGINIA

DATE: 07/27/2021 JOB #: 19-398

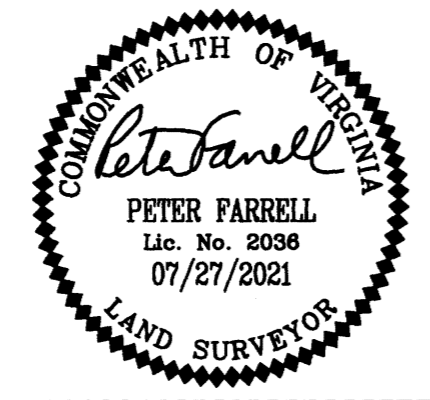
LandTech Resources, Inc.
 Engineering & Surveying Consultants

205 Bulifants Blvd., Suite E, Williamsburg, Virginia 23188

Telephone: 757-565-1677 Fax: 757-565-0782

Web: landtechresources.com

SHEET 2 OF 2



LINE	BEARING	DISTANCE
L1	S 03°24'00" W	45.64'
L2	S 03°24'00" W	80.15'
L3	N 77°14'59" W	99.87'
L4	N 03°24'00" E	81.61'
L5	S 21°25'36" W	40.00'
L6	S 08°34'27" E	36.17'
L7	S 21°25'44" W	19.48'
L8	S 68°34'26" E	81.00'
L9	N 21°25'44" E	19.84'
L10	N 79°25'32" E	38.03'
L11	S 88°34'28" E	51.78'
L12	N 21°25'36" E	33.10'

LEGEND
 IRF = IRON ROD FOUND
 NF = NAIL FOUND

CURVE	RADIUS	ARC LENGTH	CHORD LENGTH	CHORD BEARING	DELTA ANGLE
C1	5634.65'	100.12'	100.12'	N 76°25'34" W	1°01'05"
C2	5634.65'	349.53'	349.47'	S 74°08'24" E	3°33'15"
C3	5634.65'	282.61'	282.58'	S 70°55'34" E	2°52'26"
C4	5634.65'	180.00'	179.99'	S 68°34'25" E	1°49'49"
C5	5634.65'	68.95'	68.95'	S 67°18'30" E	0°42'04"
C6	5634.65'	199.40'	199.39'	S 65°56'38" E	2°01'39"
C7	5679.65'	996.70'	995.43'	S 71°59'06" E	10°03'17"

NOTES:
 A. PER D.B. 80, PG 255 PARCEL C HAS EASEMENT OF RIGHT OF WAY OVER UPON ACROSS AND THROUGH THE VEHICULAR ROADS, ALLEYS, PATHS, DRIVEWAYS AND PAVED PORTIONS OF PARCEL A.
 B. THE INTENTION OF THIS PLAT IS FOR BOUNDARY LINE EXTINGUISHMENT ONLY. IMPROVEMENTS TO THE PROPERTIES AND EASEMENTS ON THE PROPERTIES ARE NOT SHOWN.

2 Large Small Plat(s) Recorded
 herewith as # 213042

STATE OF VIRGINIA, CITY OF WILLIAMSBURG

IN THE CLERKS OFFICE OF THE CIRCUIT COURT FOR THE CITY OF WILLIAMSBURG THE 25th DAY OF August, 2021. THIS MAP WAS PRESENTED AND ADMITTED TO RECORD AS THE LAW DIRECTS AS DOCUMENT NO. 213042

TESTE *V. [Signature]*
 BY **MONA A. FOLEY, CLERK**, CLERK