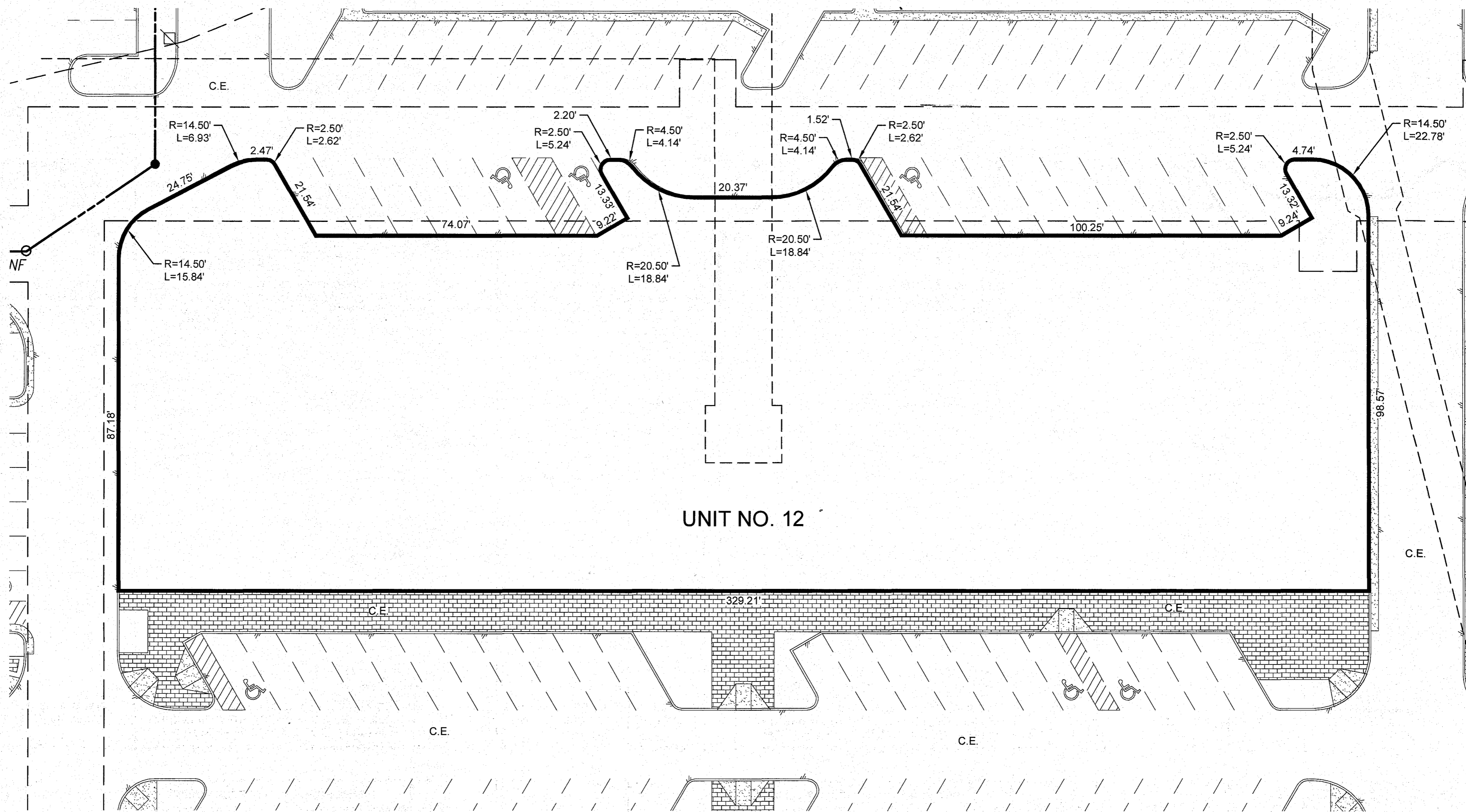


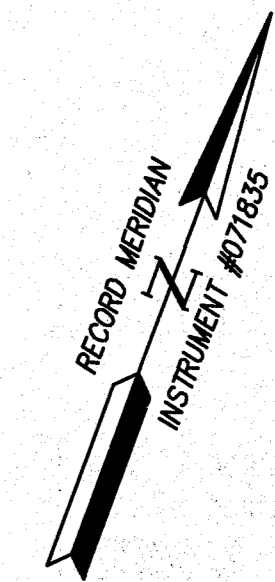
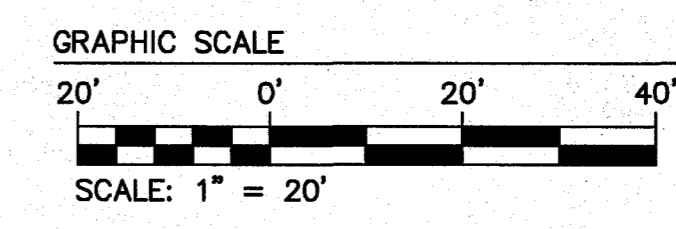
REFER TO SHEETS 1 THRU 6
FOR PLAT INFORMATION



UNIT NO. 12

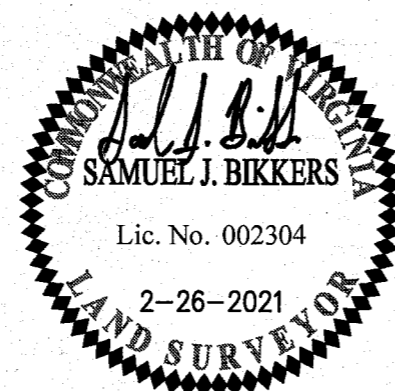
LEGEND:

- IRF = IRON ROD FOUND
- "P.K." NF = "P.K." NAIL FOUND
- [Concrete Pattern] CONCRETE SURFACE
- [Brick Pattern] BRICK PAVER SURFACE
- C.E. = COMMON ELEMENT
- [Hatched Pattern] = (L.C.E.) LIMITED COMMON ELEMENT



13	Large/Small Plat(s) Recorded herewith as #	211058
Rev.	Date	

City of Williamsburg & County of James City
Circuit Court: This PLAT was recorded on March 29, 2021
at 3:13 AM/PM PB PG
Document # 211058
MONA A. FOLEY, CLERK
Mona Foley, Clerk



AES
CONSULTING ENGINEERS

5248 Olde Towne Road, Suite 1
Williamsburg, Virginia 23188
Phone: (757) 253-0040
Fax: (757) 220-8994
www.aesva.com

Hampton Roads | Central Virginia | Middle Peninsula

EXHIBIT D
CONDOMINIUM PLATS SHOWING
SUBMITTED LAND, IMPROVEMENTS AND EXISTING EASEMENTS
HIGH STREET CONDOMINIUM

CITY OF WILLIAMSBURG VIRGINIA

Project Contacts:	SJB / CMA
Project Number:	W10594-00
Scale:	Date:
1" = 20'	02-26-2021
Sheet Number	
13 OF 13	