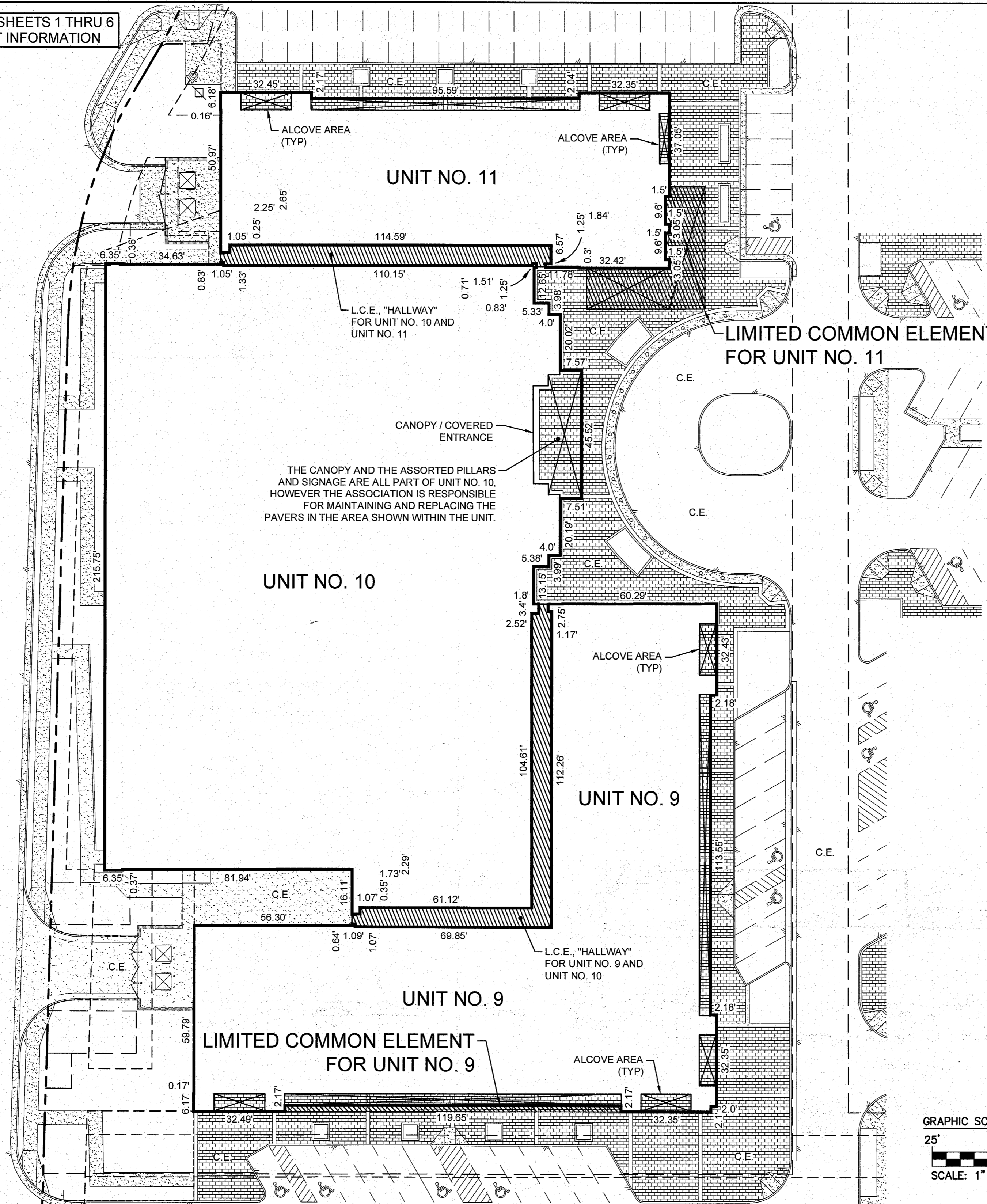



REFER TO SHEETS 1 THRU 6 FOR PLAT INFORMATION



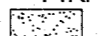
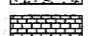
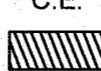
**NOTE:**  
 AREAS DESIGNATED AS  ARE RECESSED STOREFRONTS AND ENTRANCE ALCOVES AND ARE PART OF OF UNIT NO. 9 AND PART OF UNIT NO. 11 RESPECTFULLY, HOWEVER THE ASSOCIATION IS RESPONSIBLE FOR MAINTAINING AND REPLACING THE PAVERS IN THE AREAS DESIGNATED AS SUCH.

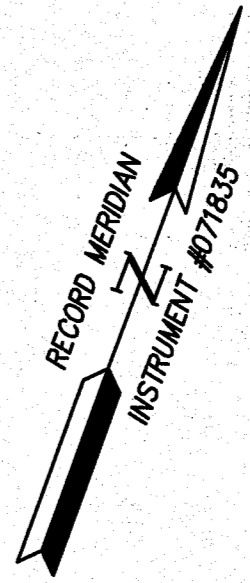
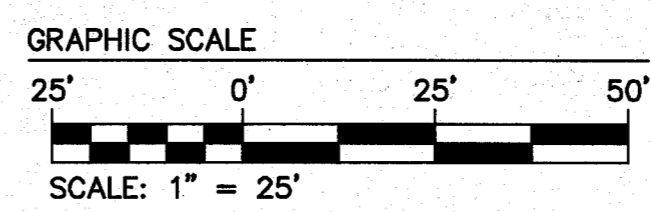
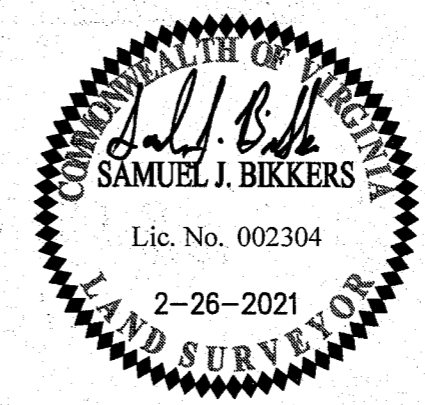
Revised By	Description
13	Large Format Plat(s) Recorded herewith as # 211058

City of Williamsburg & County of James City  
 Circuit Court; This PLAT was recorded on March 29, 2021  
 at 3:13 AM (PM) PB PG  
 Document # 211058  
 MONA A. FOLEY, CLERK  
*Mon A Foley*, Clerk

5248 Olde Towne Road, Suite 1  
 Williamsburg, Virginia 23188  
 Phone: (757) 253-0040  
 Fax: (757) 220-8994  
 www.aesva.com

**AES**  
 CONSULTING ENGINEERS  
 Hampton Roads | Central Virginia | Middle Peninsula

**LEGEND:**  
 IRF = IRON ROD FOUND  
 "P.K." NF = "P.K." NAIL FOUND  
 CONCRETE SURFACE  
 BRICK PAVER SURFACE  
 C.E. = COMMON ELEMENT  
 = (L.C.E.) LIMITED COMMON ELEMENT



**EXHIBIT D**  
 CONDOMINIUM PLATS SHOWING  
 SUBMITTED LAND, IMPROVEMENTS AND EXISTING EASEMENTS  
**HIGH STREET CONDOMINIUM**  
 VIRGINIA  
 CITY OF WILLIAMSBURG

Project Contacts:	SJB / CMA
Project Number:	W10594-00
Scale:	Date:
1" = 25'	02-26-2021
Sheet Number	
<b>12 OF 13</b>	