
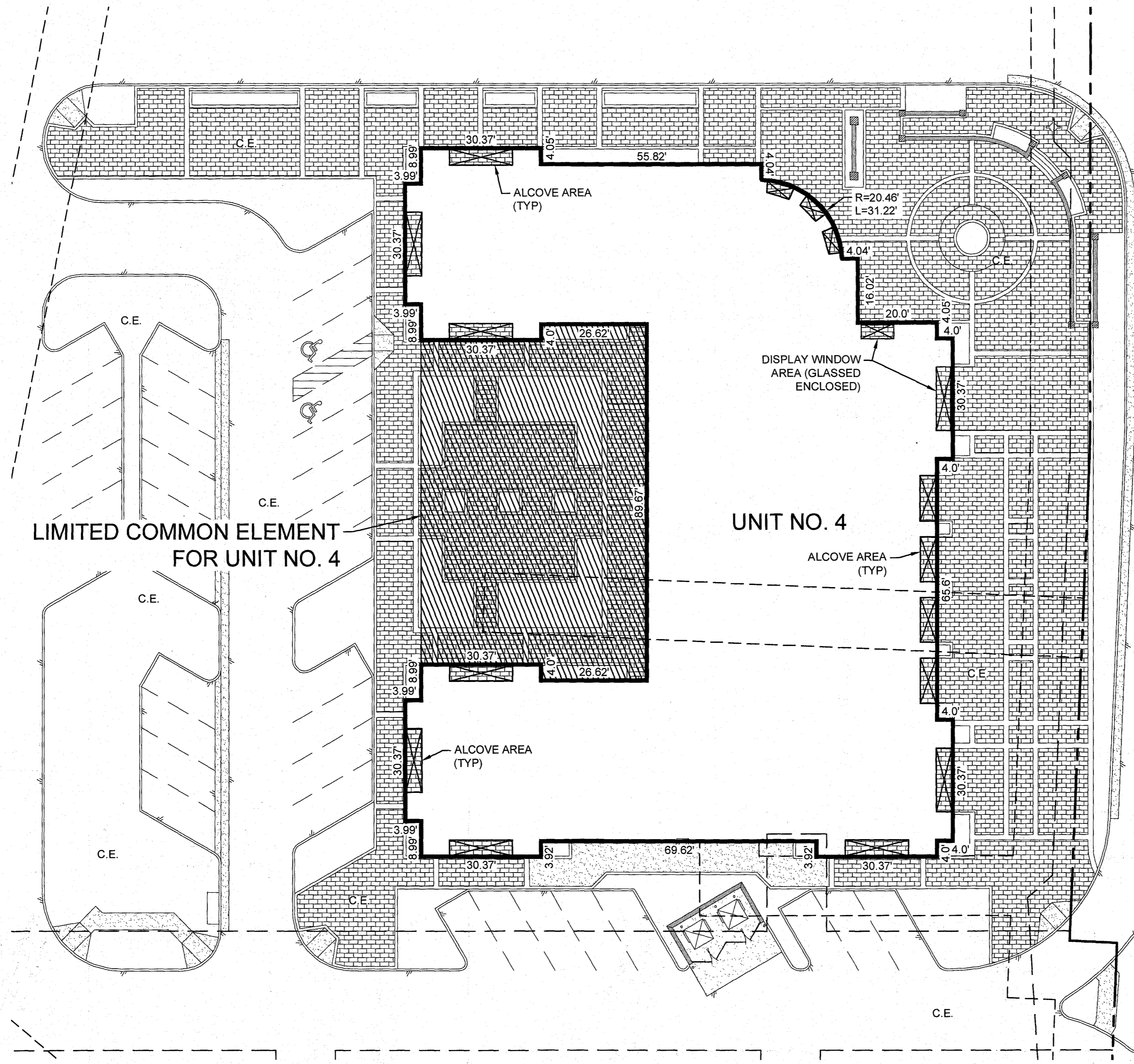
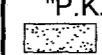

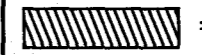
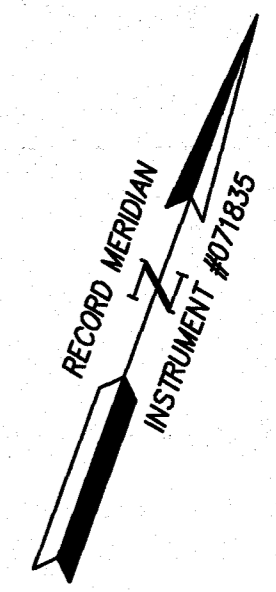
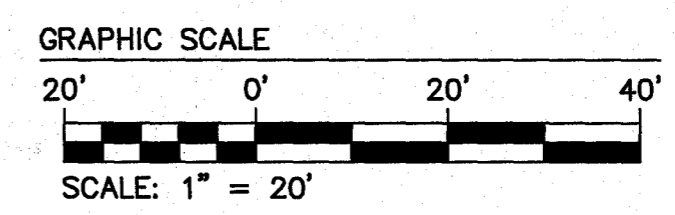


REFER TO SHEETS 1 THRU 6
FOR PLAT INFORMATION

NOTE:
AREAS DESIGNATED AS  ARE RECESSED STOREFRONTS AND ENTRANCE ALCOVES AND ARE PART OF OF UNIT NO. 4, HOWEVER THE ASSOCIATION IS RESPONSIBLE FOR MAINTAINING AND REPLACING THE PAVERS IN THE AREAS DESIGNATED AS SUCH.



LEGEND:
 IRF = IRON ROD FOUND
 "P.K." NF = "P.K." NAIL FOUND
 CONCRETE SURFACE
 BRICK PAVER SURFACE
 C.E. = COMMON ELEMENT
 = (L.C.E.) LIMITED COMMON ELEMENT



| | | |
|------|--|--------|
| 13 | Large/Small Plot(s) Recorded herewith as # | 211058 |
| Rev. | Date | |

City of Williamsburg & County of James City
 Circuit Court: This PLAT was recorded on March 29, 2021
 at 3:13 AM/PM PG
 Document # 211058
 MONA A. FOLEY, CLERK
Mona A. Foley Clerk



AES
 CONSULTING ENGINEERS
 Hampton Roads | Central Virginia | Middle Peninsula
 5248 Olde Towne Road, Suite 1
 Williamsburg, Virginia 23188
 Phone: (757) 253-0040
 Fax: (757) 220-8994
 www.aesva.com

EXHIBIT D
 CONDOMINIUM PLATS SHOWING
 SUBMITTED LAND, IMPROVEMENTS AND EXISTING EASEMENTS
HIGH STREET CONDOMINIUM
 CITY OF WILLIAMSBURG VIRGINIA

| | |
|-------------------|------------|
| Project Contacts: | SJB / CMA |
| Project Number: | W10594-00 |
| Scale: | Date: |
| 1" = 20' | 02-26-2021 |
| Sheet Number | |
| 8 OF 13 | |