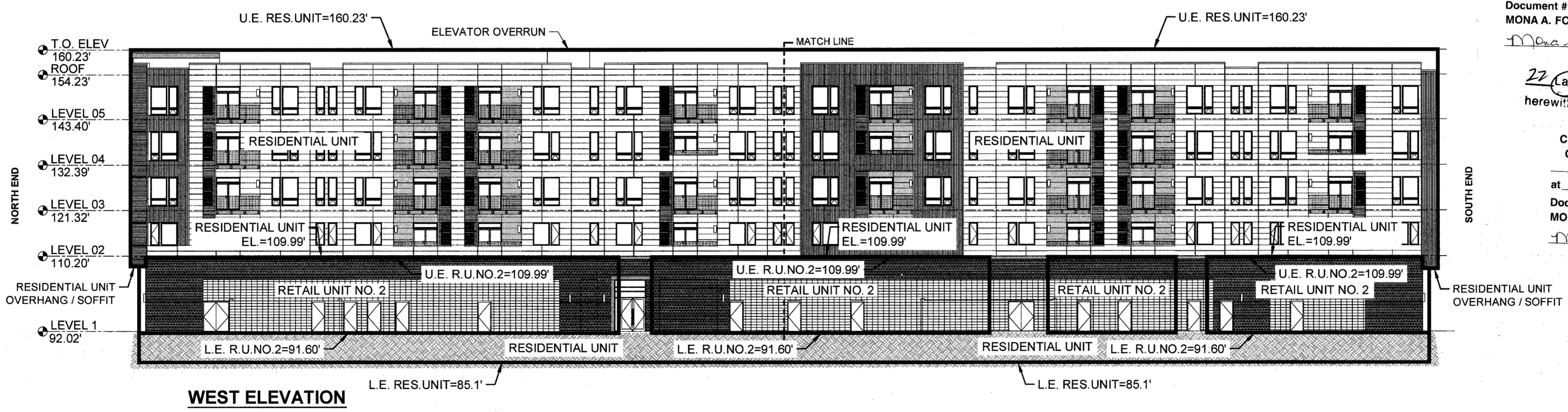
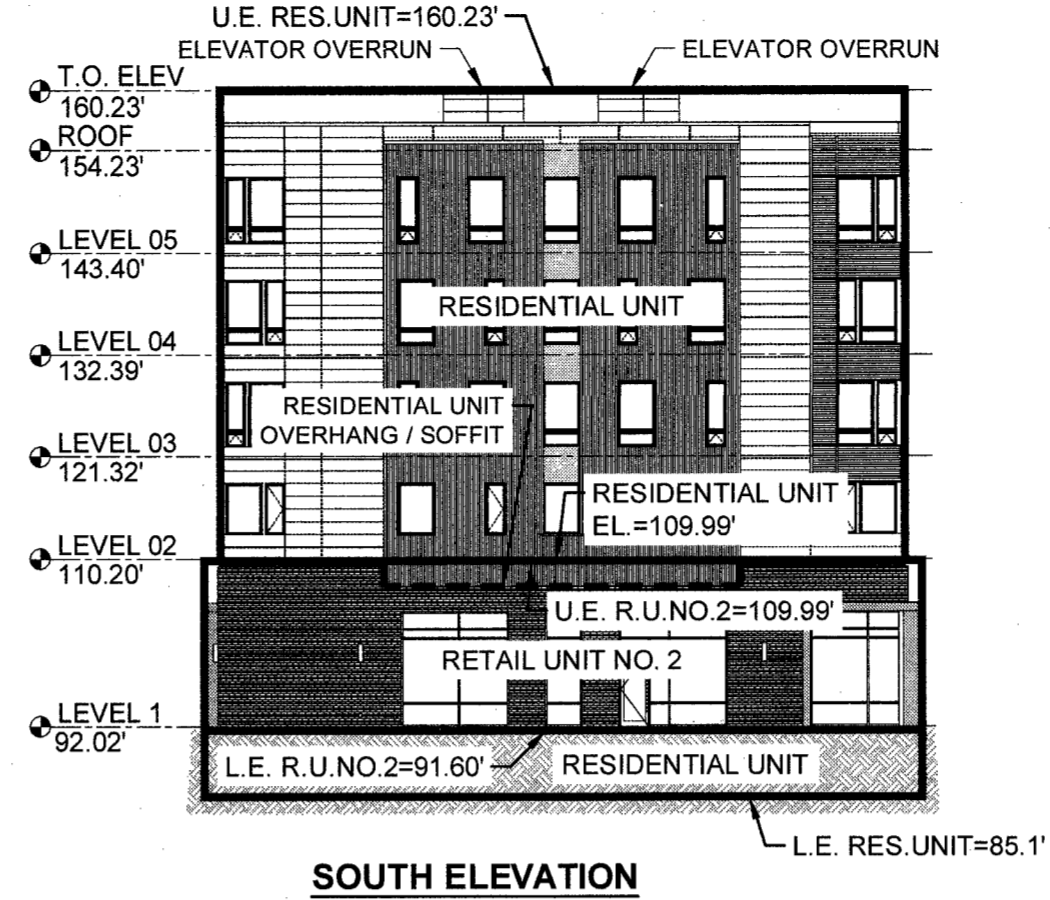
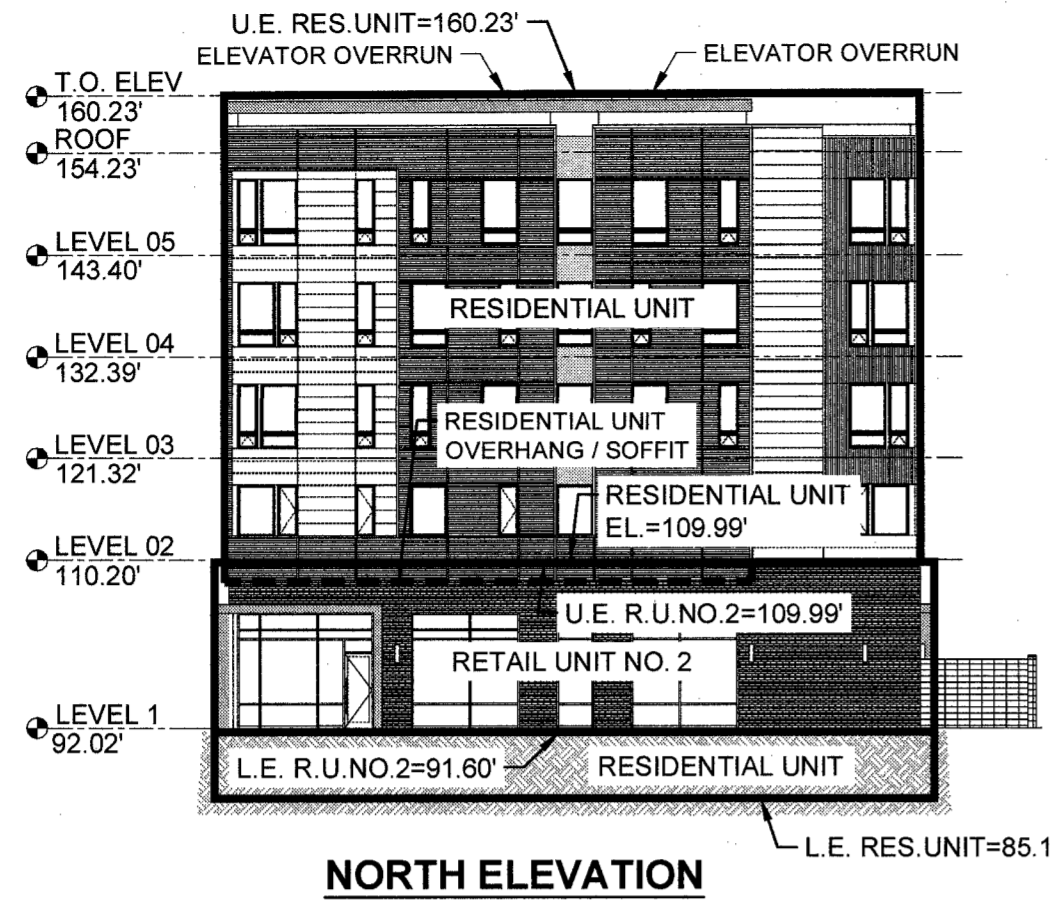


210002257 210449



City of Williamsburg & County of James City
 Circuit Court: This PLAT was recorded on
 2-4-2021
 at 1:41 AM (PM) PB PG
 Document # 210449
 MONA A. FOLEY, CLERK
 Mona A. Foley, Clerk

22 (Large) Small Plat(s) Recorded
 herewith as # 210449

City of Williamsburg & County of James City
 Circuit Court: This PLAT was recorded on
 2-4-2021
 at 1:55 AM (PM) PB PG
 Document # 210002257
 MONA A. FOLEY, CLERK
 Mona A. Foley, Clerk

22 (Large) Small Plat(s) Recorded
 herewith as # 210002257

SURVEYOR'S CERTIFICATE
 I, SAMUEL J. BIKKERS, A DULY LICENSED LAND SURVEYOR IN THE COMMONWEALTH OF VIRGINIA, DO HEREBY CERTIFY THAT THESE PLANS ARE ACCURATE AND COMPLY WITH SECTION 55.1-1920(B) OF THE VIRGINIA CONDOMINIUM ACT AS AMENDED, AND THAT ALL UNITS OR PORTIONS OF THE SUBMITTED UNITS SHOWN HEREON ARE SUBSTANTIALLY COMPLETE.
 Samuel J. Bickers
 SAMUEL J. BIKKERS, L.S. #002304
 2-2-2021
 DATE

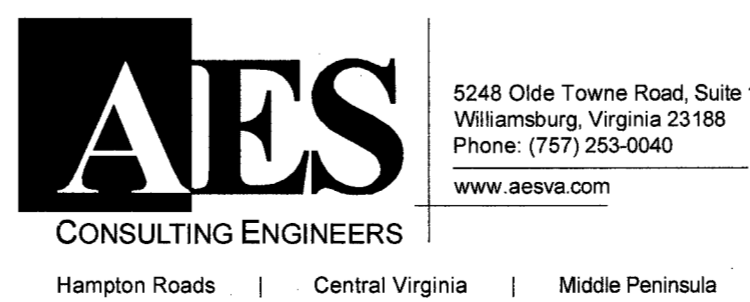
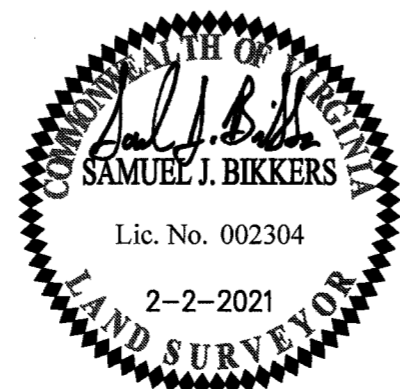


EXHIBIT C-3
 CONDOMINIUM PLANS SHOWING
 SECTION AND ELEVATION VIEWS
 BUILDING 3
MIDTOWN ROW COMMERCIAL CONDOMINIUM
 CITY OF WILLIAMSBURG VIRGINIA

Project Contacts:	SJB / CMA
Project Number:	W09042-12
Scale:	Date:
N / A	02-02-2021
Sheet Number	
15 OF 22	