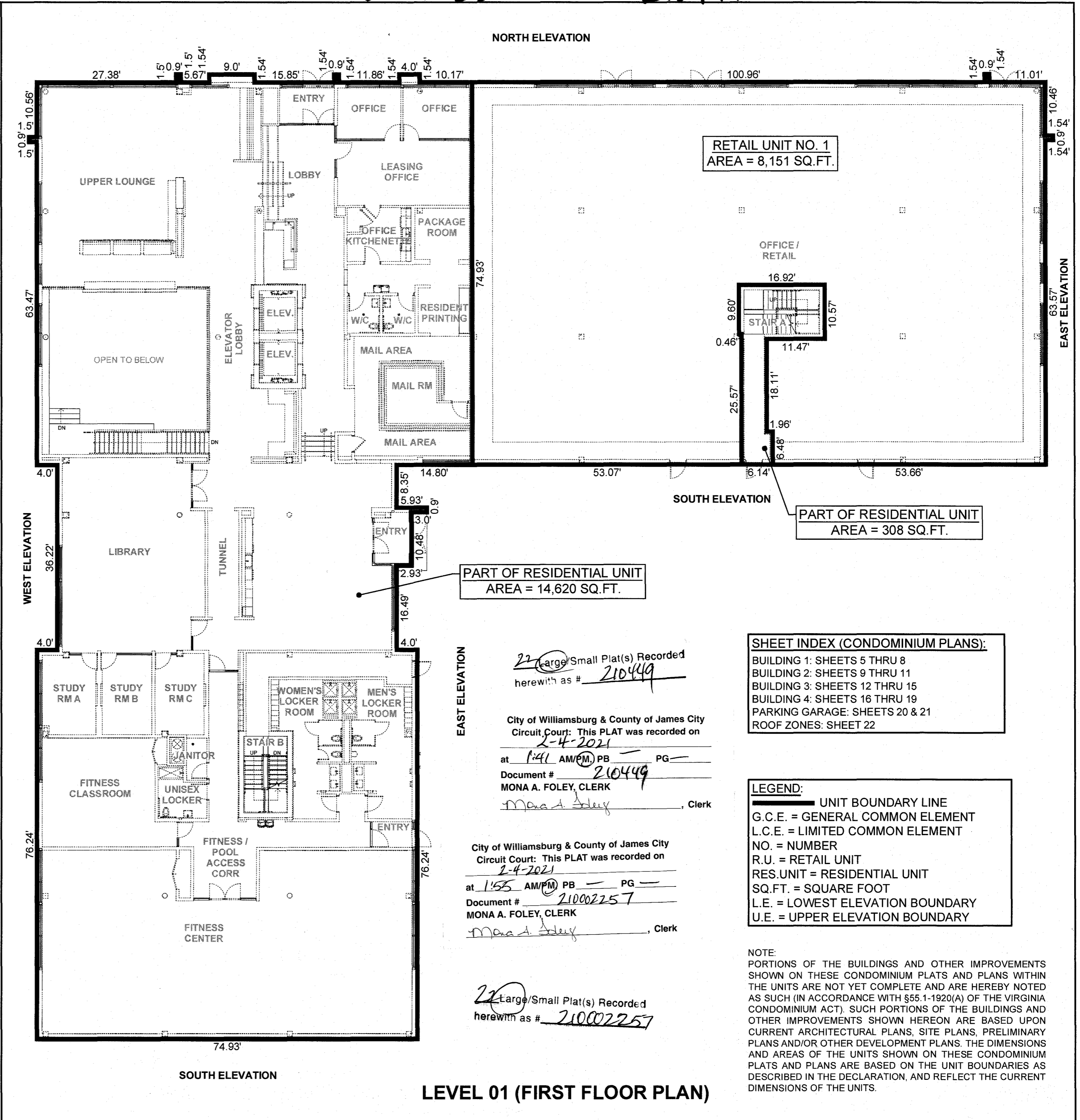
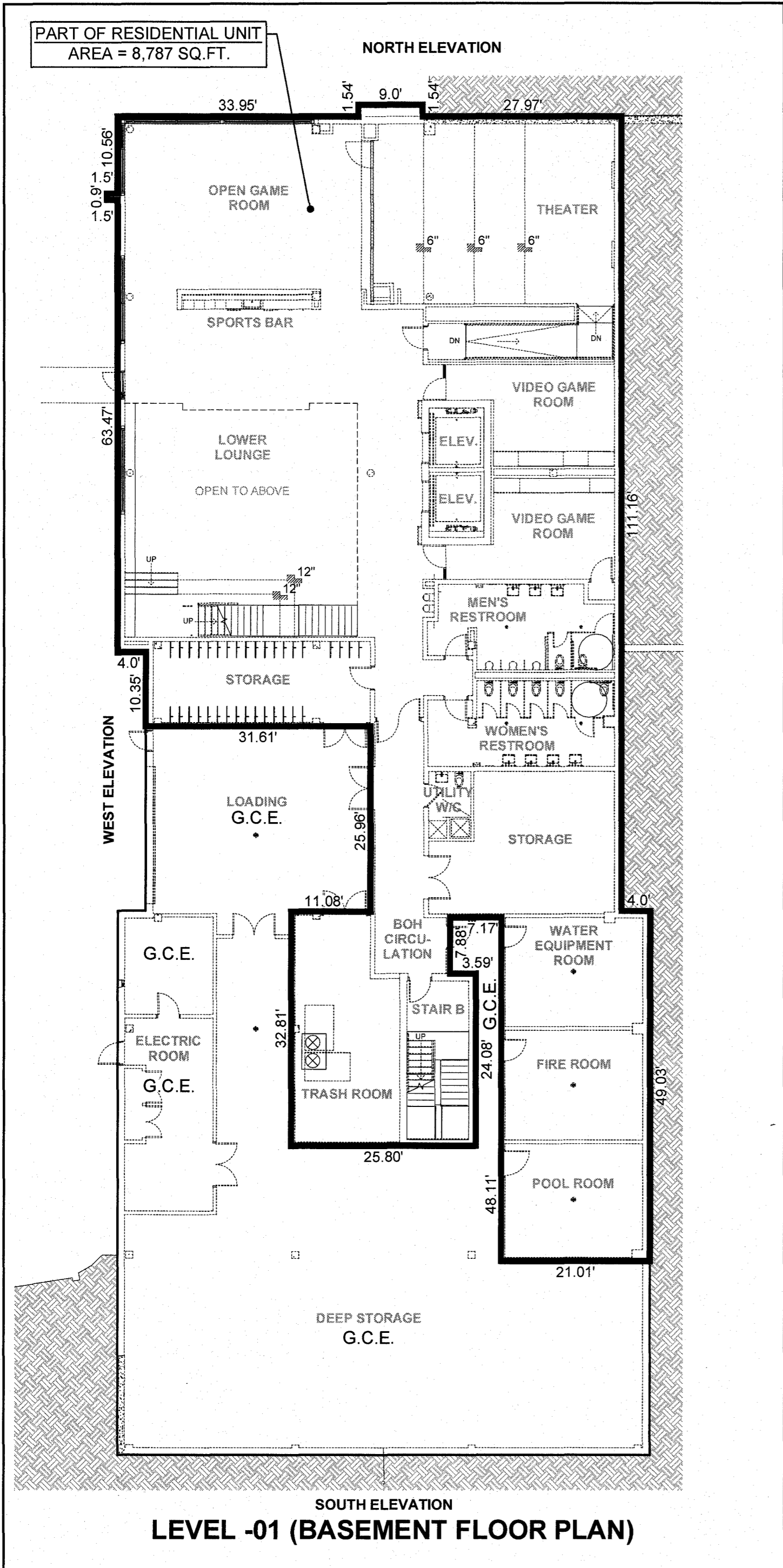


210002257

210449



22 Large Small Plat(s) Recorded
herewith as # 210449

City of Williamsburg & County of James City
Circuit Court: This PLAT was recorded on
2-4-2021
at 1:41 AM/PM PB PG
Document # 210449
MONA A. FOLEY, CLERK
Mon A. Foley, Clerk

City of Williamsburg & County of James City
Circuit Court: This PLAT was recorded on
2-4-2021
at 1:55 AM/PM PB PG
Document # 210002257
MONA A. FOLEY, CLERK
Mon A. Foley, Clerk

SHEET INDEX (CONDOMINIUM PLANS):
BUILDING 1: SHEETS 5 THRU 8
BUILDING 2: SHEETS 9 THRU 11
BUILDING 3: SHEETS 12 THRU 15
BUILDING 4: SHEETS 16 THRU 19
PARKING GARAGE: SHEETS 20 & 21
ROOF ZONES: SHEET 22

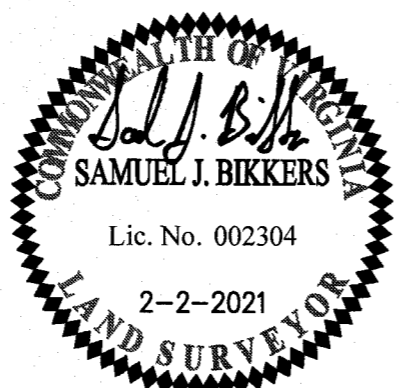
LEGEND:
UNIT BOUNDARY LINE
G.C.E. = GENERAL COMMON ELEMENT
L.C.E. = LIMITED COMMON ELEMENT
NO. = NUMBER
R.U. = RETAIL UNIT
RES.UNIT = RESIDENTIAL UNIT
SQ.FT. = SQUARE FOOT
L.E. = LOWEST ELEVATION BOUNDARY
U.E. = UPPER ELEVATION BOUNDARY

NOTE:
PORTIONS OF THE BUILDINGS AND OTHER IMPROVEMENTS SHOWN ON THESE CONDOMINIUM PLATS AND PLANS WITHIN THE UNITS ARE NOT YET COMPLETE AND ARE HEREBY NOTED AS SUCH (IN ACCORDANCE WITH §55.1-1920(A) OF THE VIRGINIA CONDOMINIUM ACT). SUCH PORTIONS OF THE BUILDINGS AND OTHER IMPROVEMENTS SHOWN HEREON ARE BASED UPON CURRENT ARCHITECTURAL PLANS, SITE PLANS, PRELIMINARY PLANS AND/OR OTHER DEVELOPMENT PLANS. THE DIMENSIONS AND AREAS OF THE UNITS SHOWN ON THESE CONDOMINIUM PLATS AND PLANS ARE BASED ON THE UNIT BOUNDARIES AS DESCRIBED IN THE DECLARATION, AND REFLECT THE CURRENT DIMENSIONS OF THE UNITS.

SURVEYOR'S CERTIFICATE
I, SAMUEL J. BIKKERS, A DULY LICENSED LAND SURVEYOR IN THE COMMONWEALTH OF VIRGINIA, DO HEREBY CERTIFY THAT THESE PLANS ARE ACCURATE AND COMPLY WITH SECTION 55.1-1920(B) OF THE VIRGINIA CONDOMINIUM ACT AS AMENDED, AND THAT ALL UNITS OR PORTIONS OF THE SUBMITTED UNITS SHOWN HEREON ARE SUBSTANTIALLY COMPLETE.

Samuel J. Bickers
SAMUEL J. BIKKERS, L.S. #002304

2-2-2021
DATE



AES
CONSULTING ENGINEERS
5248 Olde Towne Road, Suite 1
Williamsburg, Virginia 23188
Phone: (757) 253-0040
www.aesva.com
Hampton Roads | Central Virginia | Middle Peninsula

**EXHIBIT C-2
CONDOMINIUM PLANS SHOWING
UNITS AND DIMENSIONS
BUILDING 1
MIDTOWN ROW COMMERCIAL CONDOMINIUM**

CITY OF WILLIAMSBURG VIRGINIA

Project Contacts: SJB / CMA
Project Number: W09042-12
Scale: N/A Date: 02-02-2021
Sheet Number
5 OF 22