

210023784



N/F
TOMCO WILLIAMSBURG LLC
PIN:5920100052
INST. NO. 190000054
ZONED M1
1720 ENDEAVOR DRIVE

R=78.01'
L=99.37'
Δ=72°59'08"
CHB=N 67°23'45" W
CHD=92.78'

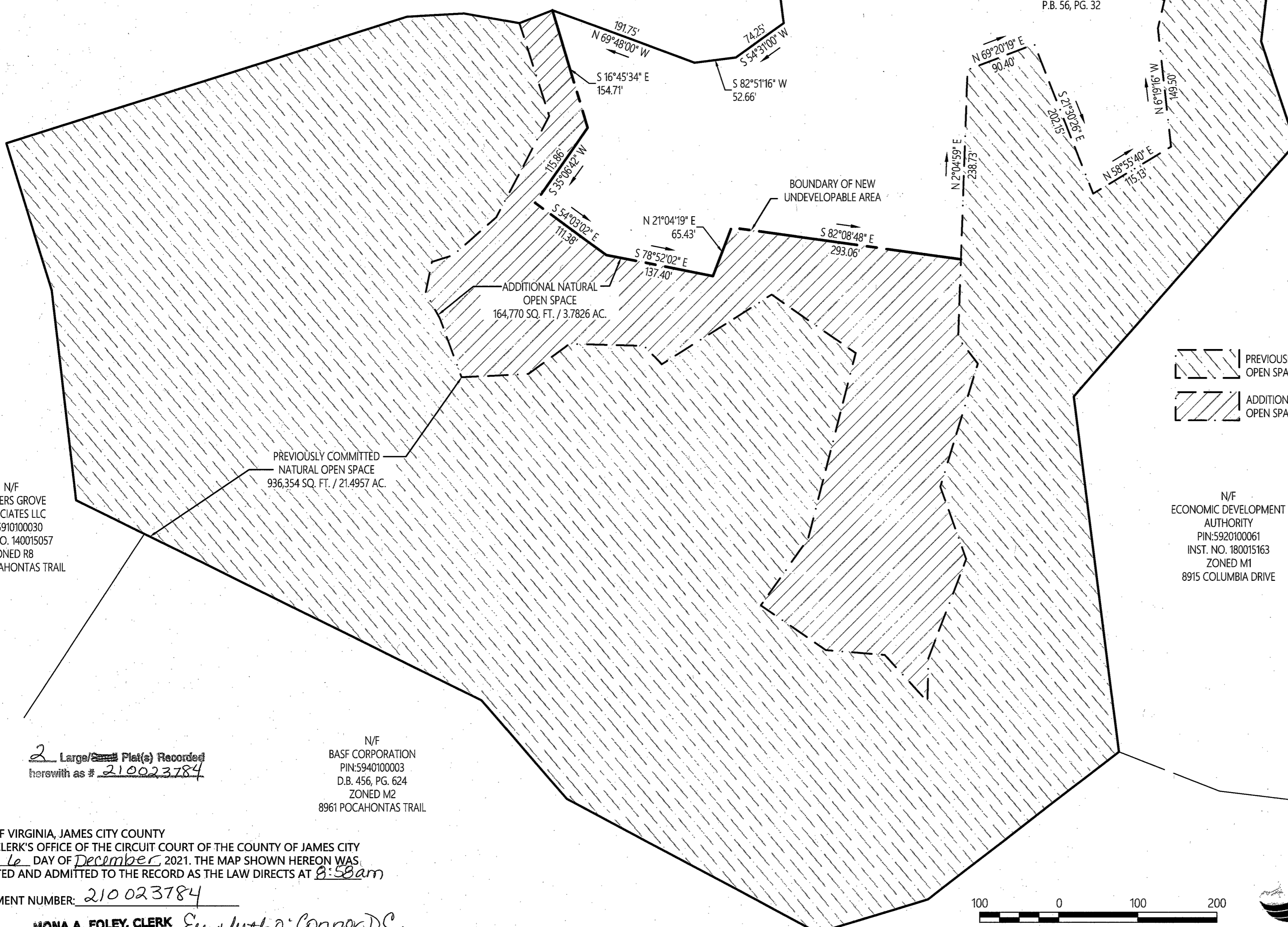
ENDEAVOR DRIVE
P.B. 65, PG. 90

R=520.00'
L=112.41'
Δ=12°23'10"
CHB=S 68°18'48" W
CHD=112.19'

N/F
CARTERS GROVE
ASSOCIATES LLC
PIN:5910100030
INST. NO. 140015057
ZONED R8
8797 POCAHONTAS TRAIL

MONTROSE, LLC
PIN:5920100054
INST. NO. 030031551
ZONED M1
1737 ENDEAVOR DRIVE
1,511,862 SQ. FT. / 34,7076 AC.
OLD DEVELOPABLE AREA
575,521 SQ. FT. / 13,2121 AC.
NEW DEVELOPABLE AREA
410,749 SQ. FT. / 9,4295 AC.

N/F
1733 ENDEAVOR LLC
PIN:5920100060
INST. NO. 100002564
ZONED M1
1733 ENDEAVOR DRIVE



BOUNDARY OF EXISTING
UNDEVELOPABLE AREA
P.B. 56, PG. 32

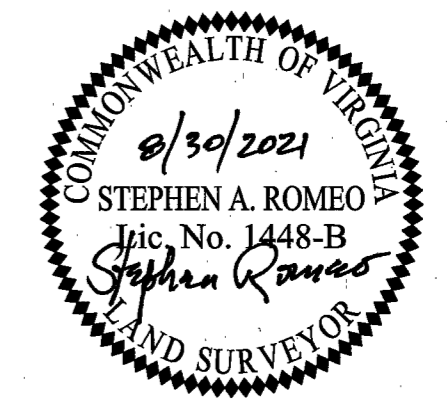
BOUNDARY OF NEW
UNDEVELOPABLE AREA

ADDITIONAL NATURAL
OPEN SPACE
164,770 SQ. FT. / 3,7826 AC.

PREVIOUSLY COMMITTED
NATURAL OPEN SPACE
936,354 SQ. FT. / 21,4957 AC.

PREVIOUSLY COMMITTED NATURAL
OPEN SPACE 21.4957 AC.
 ADDITIONAL NATURAL
OPEN SPACE 3.7826 AC.

N/F
ECONOMIC DEVELOPMENT
AUTHORITY
PIN:5920100061
INST. NO. 180015163
ZONED M1
8915 COLUMBIA DRIVE



PLAT
NATURAL OPEN SPACE
JAMES RIVER COMMERCE CENTER
PARCEL 10B
MONTROSE, LLC
PIN:5920100054

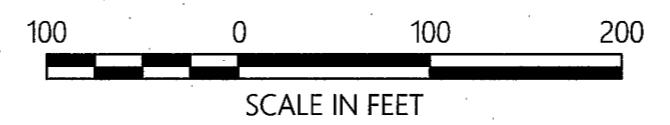
JAMES CITY COUNTY, VIRGINIA
DATE: 8/30/2021
SHEET 2 OF 2

2 Large/Covered Plat(s) Recorded
herewith as # 210023784

N/F
BASF CORPORATION
PIN:5940100003
D.B. 456, PG. 624
ZONED M2
8961 POCAHONTAS TRAIL

STATE OF VIRGINIA, JAMES CITY COUNTY
IN THE CLERK'S OFFICE OF THE CIRCUIT COURT OF THE COUNTY OF JAMES CITY
THIS 16 DAY OF December, 2021. THE MAP SHOWN HEREON WAS
PRESENTED AND ADMITTED TO THE RECORD AS THE LAW DIRECTS AT 8:58am

INSTRUMENT NUMBER: 210023784
TESTE: MONA A. FOLEY, CLERK *Elizabeth D. Connor DC.*



Transportation
Land Development
Environmental Services

351 McLaws Circle, Suite 3
Williamsburg, Virginia 23185
757 220 0500 • FAX 757 903 2794