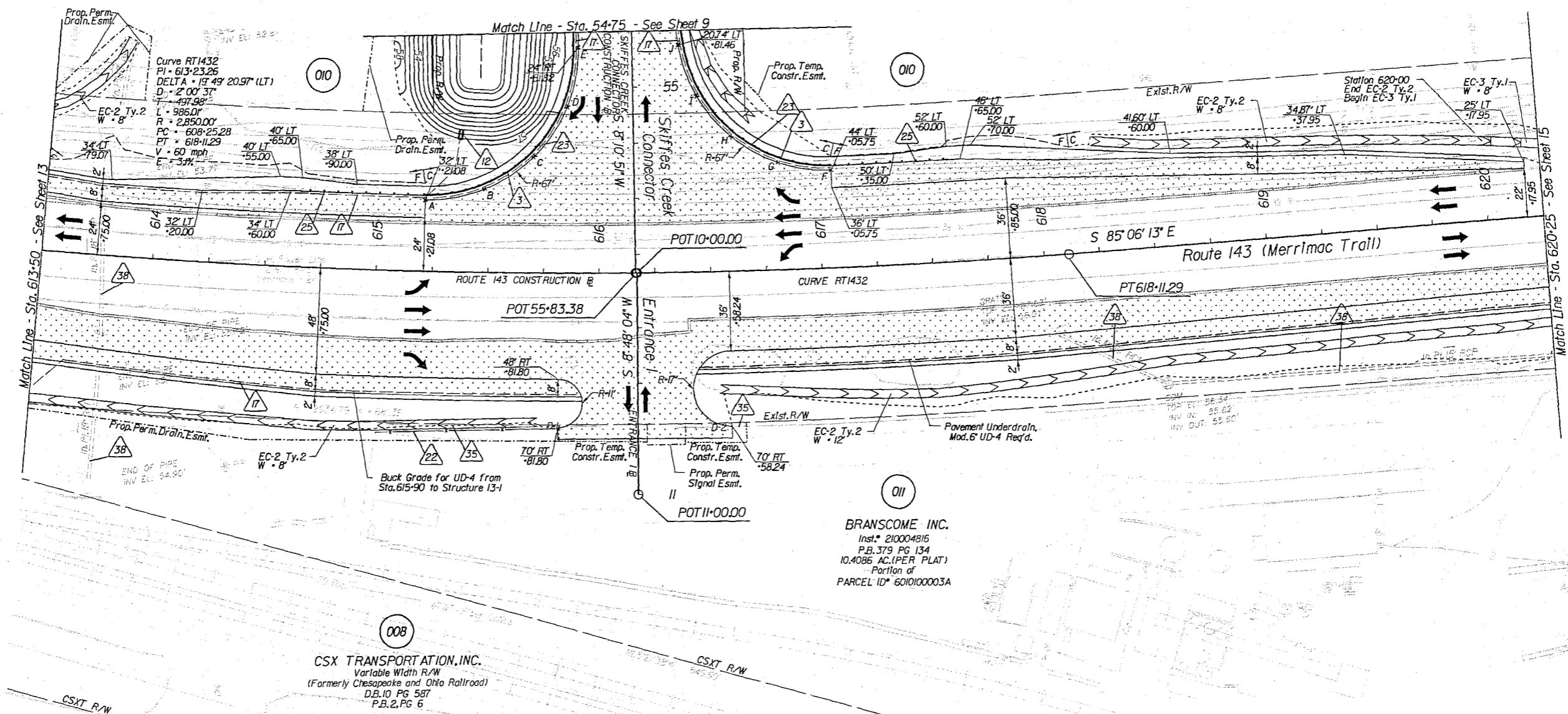




PROJECT MANAGER Mr. Wali Zaman, PE - VDOT Hampton Roads District - (757) 956-3272  
 SURVEYED BY, DATE Dewberry Engineers Inc., 03/20/2020  
 DESIGNED BY, Dewberry Engineers Inc. - (804) 205-3340  
 SUBSURFACE UTILITY BY, Accumark, 04/20/20

Skiffes-Rte143 NW Elevations (F.I.)		Skiffes-Rte143 NE Elevations (F.I.)	
A	58.71	F	58.26
B	58.47	G	58.24
C	58.05	H	58.01
D	57.20	I	57.68
E	56.59	J	57.11

		REVISED 03/24/21 10/21/21	STATE VA.	ROUTE 60	STATE PROJECT 0060-047-627 R-201 C-501	SHEET NO. 14
		DESIGN FEATURES RELATING TO CONSTRUCTION OR TO REGULATION AND CONTROL OF TRAFFIC MAY BE SUBJECT TO CHANGE AS DEEMED NECESSARY BY THE DEPARTMENT				
Matthew C. Thomas Date: 2021.10.21 Date: 2021.10.21 Date: 08/07/35-04/00' Date: 08/07/46-04/00' Dewberry Engineers Inc. Glen Allen, Virginia HYDRAULIC ENGINEER		Matthew C. Thomas Date: 2021.10.21 Date: 2021.10.21 Date: 08/07/46-04/00' Dewberry Engineers Inc. Glen Allen, Virginia ROADWAY ENGINEER				



- Key Legend (XX)
- 6' Curb, Std. CG-2 Req'd.
  - 4' Curb, Std. CG-3 Req'd.
  - 6' Curb and Gutter, Std. CG-6 Req'd.
  - 4' Curb and Gutter, Std. CG-7 Req'd.
  - Conc. Raised Median, Std. MS-1 Req'd.
  - Conc. Raised Median, Std. MS-1A Req'd.
  - Grass Raised Median, Std. MS-2 Req'd.
  - Entrance Gutter, Std. CG-9B Req'd.
  - Entrance Gutter, Std. CG-9D Req'd.
  - Entrance, Std. CG-11 Req'd.
  - Curb Ramp, Std. CG-12 Req'd.
  - Underdrain Endwall, Std. EW-12 Req'd.
  - Abandon Pipe, Std. AP-1 Req'd.
  - Groundwater Underdrain, Std. UD-1 Req'd.
  - Median Underdrain, Std. UD-2 Req'd.
  - Sidewalk Underdrain, Std. UD-3 Req'd.
  - Pavement Underdrain, Std. UD-4 Req'd.
  - Crossdrain, Std. CD-1 Req'd.
  - Crossdrain, Std. CD-2 Req'd.
  - Handrail, Std. HR-1 Type II Req'd.
  - Barbed Wire Fence, Std. FE-B Req'd.
  - Chain Link Fence, Std. FE-CL Req'd.
  - Guardrail, Std. GR-MGS1 Req'd.
  - Guardrail, Std. GR-MGS1A Req'd.
  - Guardrail Terminal, Std. GR-MGS2 Req'd.
  - Guardrail, Std. GR-10, 3' Height, Type I Req'd.
  - Guardrail, Std. GR-10, 3' Height, Type II Req'd.
  - Guardrail, Std. GR-10, 3' Height, Type III Req'd.
  - Trailing End Terminal, Std. GR-MGS3 Req'd.
  - Fixed Object Att., Std. GR-FOA-5 Req'd.
  - Fixed Object Att., Std. GR-FOA-2 Req'd.
  - Guardrail, Std. GR-MGS4
  - Bridge Pier Protection, Std. BPPS-1
  - Remove Exist. Guardrail
  - Remove Exist. Fence
  - Remove Exist. Structure
  - Remove Exist. Pipe
  - Abandon and Plug Exist. Pipe
  - Ad Just Exist. Structure
  - Clean Out Exist. Structure
  - Clean Out Exist. Pipe
  - Full Depth Sawcut
  - 6' Curb and Dry Gutter, Mod. CG-6 Req'd.
  - Conc. Median Barrier, Std. MB-7F Req'd.

- Denotes Full Depth Pavement
- Denotes Guardrail Bumpout Pavement Section
- Denotes Pavement Demolition
- Denotes Mill & Variable Depth Overlay
- Denotes Milling and Overlay
- Denotes Construction Limits In Cuts
- Denotes Construction Limits In Fills

REFERENCES  
(PROFILES, DETAIL & DRAINAGE DESCRIPTION SHEETS, ETC.)

Alignment Data	1G
ESC Phase 1	2D series
ESC Phase 2	2E series
ESC Phase 3	2F series
Skiffes Creek Profile	9A
Merrimac Trail Profile	14A
Entrance I Profile	15A
Right-of-Way Plan	14RW

SCALE 0 25 50'

PROJECT 0060-047-627

SHEET NO. 14