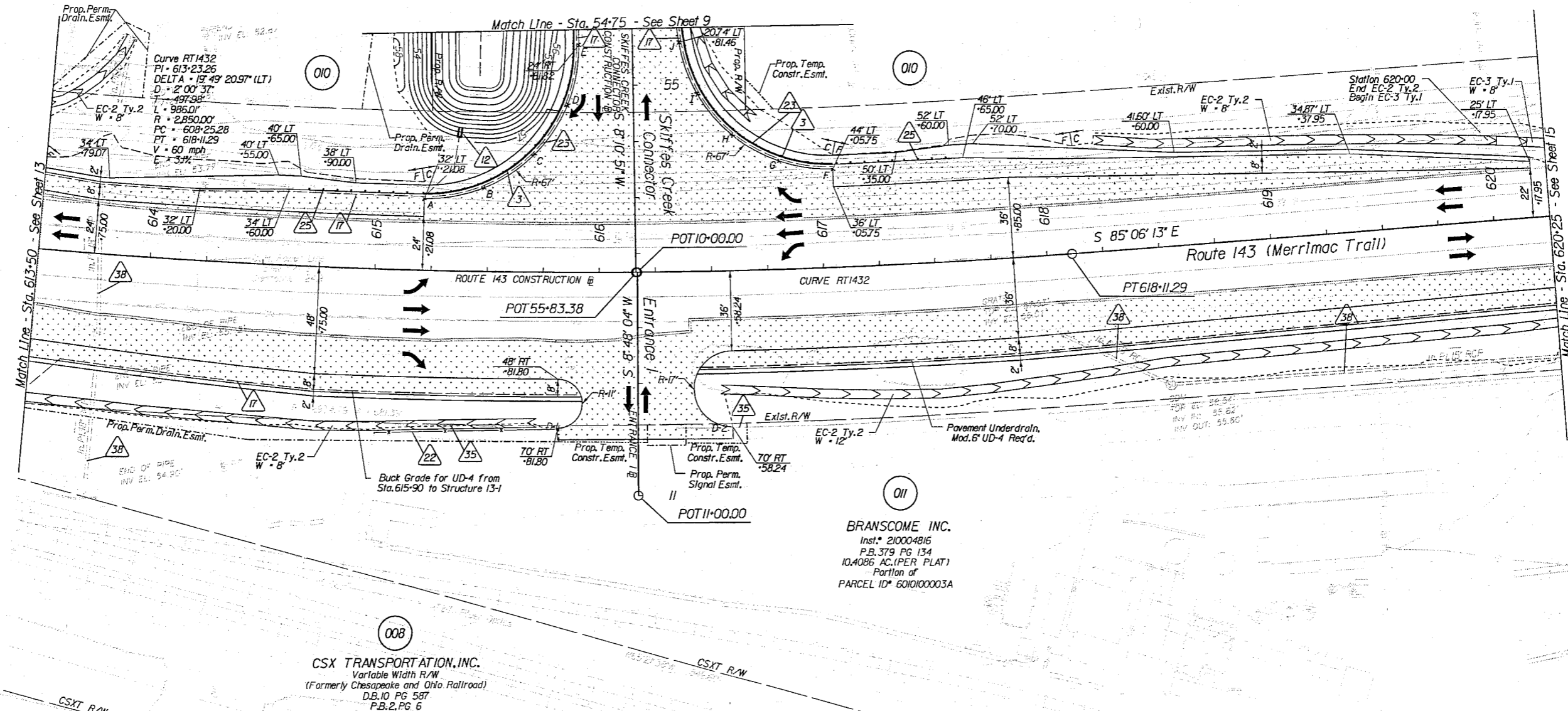




PROJECT MANAGER Mr. Wolf Zaman, PE - VDOT Hampton Roads District - (757) 956-3272
SURVEYED BY, DATE Dewberry Engineers Inc., 03/20/20
DESIGNED BY, Dewberry Engineers Inc. - (804) 205-3340
SUBSURFACE UTILITY BY, Accumark, 04/20/20

Skiffes-Rte143 NW Elevations (Ft.)		Skiffes-Rte143 NE Elevations (Ft.)	
A	58.71	F	58.26
B	58.47	G	58.24
C	58.05	H	58.01
D	57.20	I	57.68
E	56.59	J	57.11

	REVISED 03/24/21 10/21/21	STATE VA.	ROUTE 60	STATE PROJECT 0060-047-627 R-201 C-501	SHEET NO. 14
	Matthew C. Thomas Date: 2021.10.21 08:07:35 -04'00'	Matthew C. Thomas Date: 2021.10.21 08:07:46 -04'00'	DESIGN FEATURES RELATING TO CONSTRUCTION OR TO REGULATION AND CONTROL OF TRAFFIC MAY BE SUBJECT TO CHANGE AS DEEMED NECESSARY BY THE DEPARTMENT		
Dewberry Engineers Inc. Glen Allen, Virginia HYDRAULIC ENGINEER	Dewberry Engineers Inc. Glen Allen, Virginia ROADWAY ENGINEER				



BRANSCOME INC.
Inst. # 210004816
P.B. 379 PG 134
10A086 AC (PER PLAT)
Portion of
PARCEL ID # 6010100003A

CSX TRANSPORTATION, INC.
Variable Width R/W
(Formerly Chesapeake and Ohio Railroad)
D.B. 10 PG 587
P.B. 2 PG 6

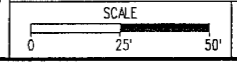
Key Legend

- | | | | |
|--|---|--|---|
| 1 6" Curb, Std. CG-2 Req'd. | 12 Underdrain Endwall, Std. EW-12 Req'd. | 23 Guardrail, Std. GR-MGS1 Req'd. | 34 Remove Exst. Guardrail |
| 2 4" Curb, Std. CG-3 Req'd. | 13 Abandon Pipe, Std. PP-1 Req'd. | 24 Guardrail, Std. GR-MGS1A Req'd. | 35 Remove Exst. Fence |
| 3 6" Curb and Gutter, Std. CG-6 Req'd. | 14 Groundwater Underdrain, Std. UD-1 Req'd. | 25 Guardrail Terminal, Std. GR-MGS2 Req'd. | 36 Remove Exst. Structure |
| 4 4" Curb and Gutter, Std. CG-7 Req'd. | 15 Median Underdrain, Std. UD-2 Req'd. | 26 Guardrail, Std. GR-10, 31" Height, Type I Req'd. | 37 Remove Exst. Pipe |
| 5 Conc. Raised Median, Std. MS-1 Req'd. | 16 Sidewalk Underdrain, Std. UD-3 Req'd. | 27 Guardrail, Std. GR-10, 31" Height, Type II Req'd. | 38 Abandon and Plug Exst. Pipe |
| 6 Conc. Raised Median, Std. MS-1A Req'd. | 17 Pavement Underdrain, Std. UD-4 Req'd. | 28 Trailing End Terminal, Std. GR-MGS3 Req'd. | 39 Adjust Exst. Structure |
| 7 Grass Raised Median, Std. MS-2 Req'd. | 18 Crossdrain, Std. CD-1 Req'd. | 29 Fixed Object Att. Std. GR-FOA-5 Req'd. | 40 Clean Out Exst. Structure |
| 8 Entrance Gutter, Std. CG-9B Req'd. | 19 Crossdrain, Std. CD-2 Req'd. | 30 Fixed Object Att. Std. GR-FOA-2 Req'd. | 41 Clean Out Exst. Pipe |
| 9 Entrance Gutter, Std. CG-9D Req'd. | 20 Handrail, Std. HR-1 Type II Req'd. | 31 Fixed Object Att. Std. GR-FOA-2 Req'd. | 42 Full Depth Sawcut |
| 10 Entrance, Std. CG-11 Req'd. | 21 Barbed Wire Fence, Std. FE-B Req'd. | 32 Guardrail, Std. GR-MGS4 | 43 6" Curb and Dry Gutter, Mod. CG-6 Req'd. |
| 11 Curb Ramp, Std. CG-12 Req'd. | 22 Chain Link Fence, Std. FE-CL Req'd. | 33 Bridge Pier Protection, Std. BPPS-1 | 44 Conc. Median Barrier, Std. MB-7F Req'd. |

- | | | | |
|--|-----------------------------|--|--|
| | Denotes Full Depth Pavement | | Denotes Guardrail Bumpout Pavement Section |
| | Denotes Pavement Demolition | | Denotes Mill & Variable Depth Overlay |
| | Denotes Milling and Overlay | | Denotes Construction Limits In Cuts |
| | | | Denotes Construction Limits In Fills |

REFERENCES
(PROFILES, DETAIL & DRAINAGE DESCRIPTION SHEETS, ETC.)

- | | |
|------------------------|-----------|
| Alignment Data | 1G |
| ESC Phase 1 | 2D series |
| ESC Phase 2 | 2E series |
| ESC Phase 3 | 2F series |
| Skiffes Creek Profile | 9A |
| Merrimac Trail Profile | 14A |
| Entrance I Profile | 15A |
| Right-of-Way Plan | 14RW |



PROJECT	0060-047-627	SHEET NO.	14
---------	--------------	-----------	----