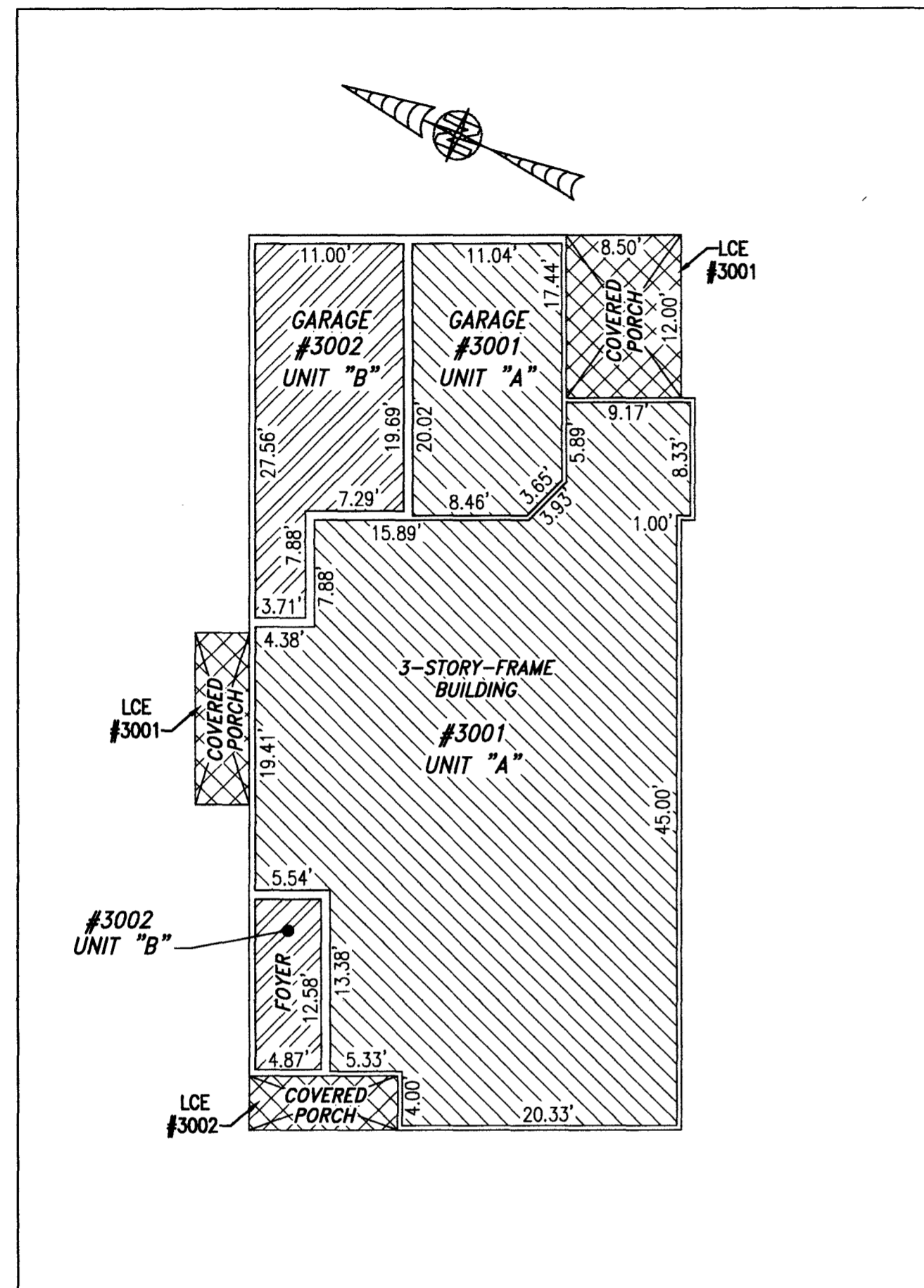
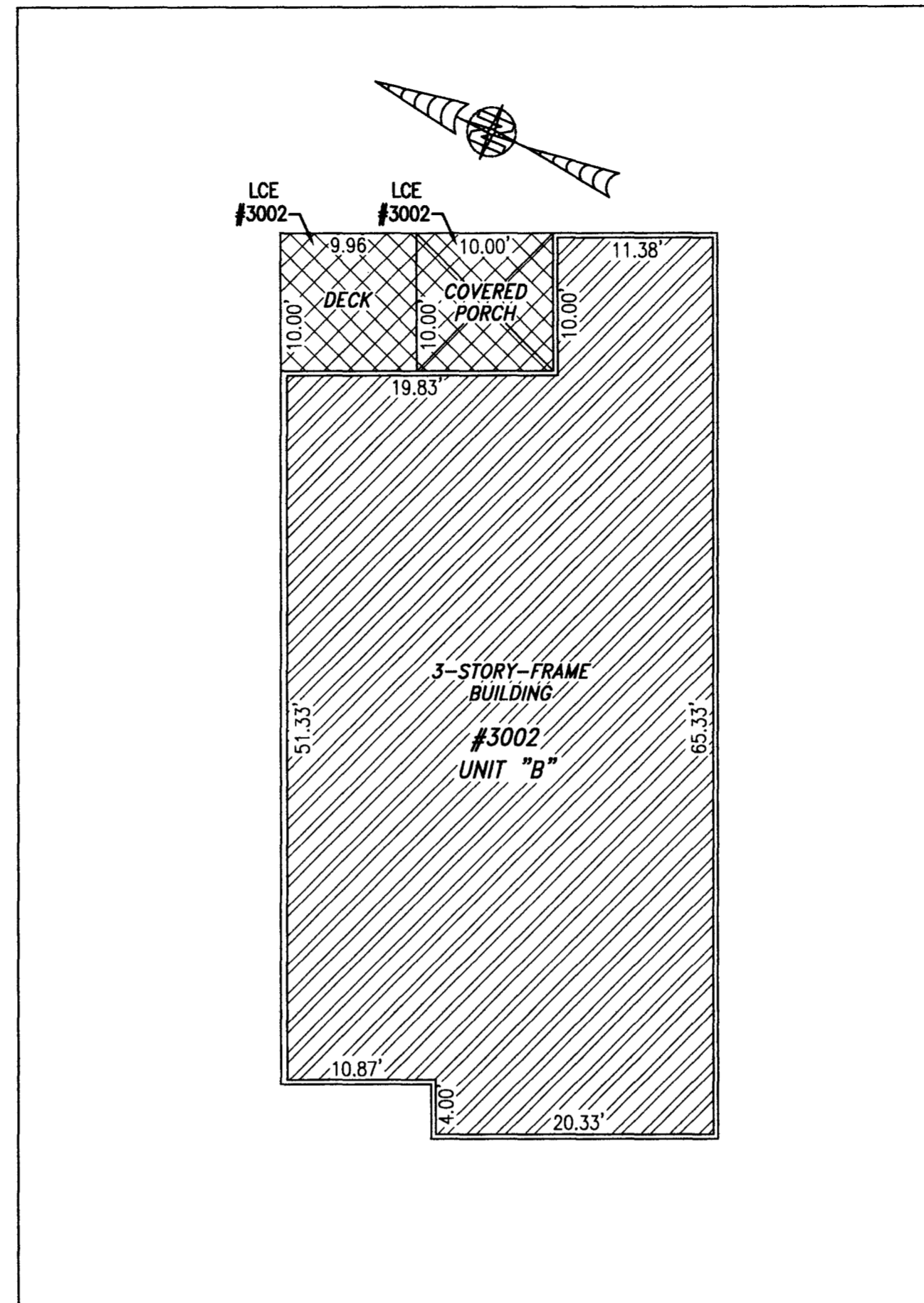


210018750

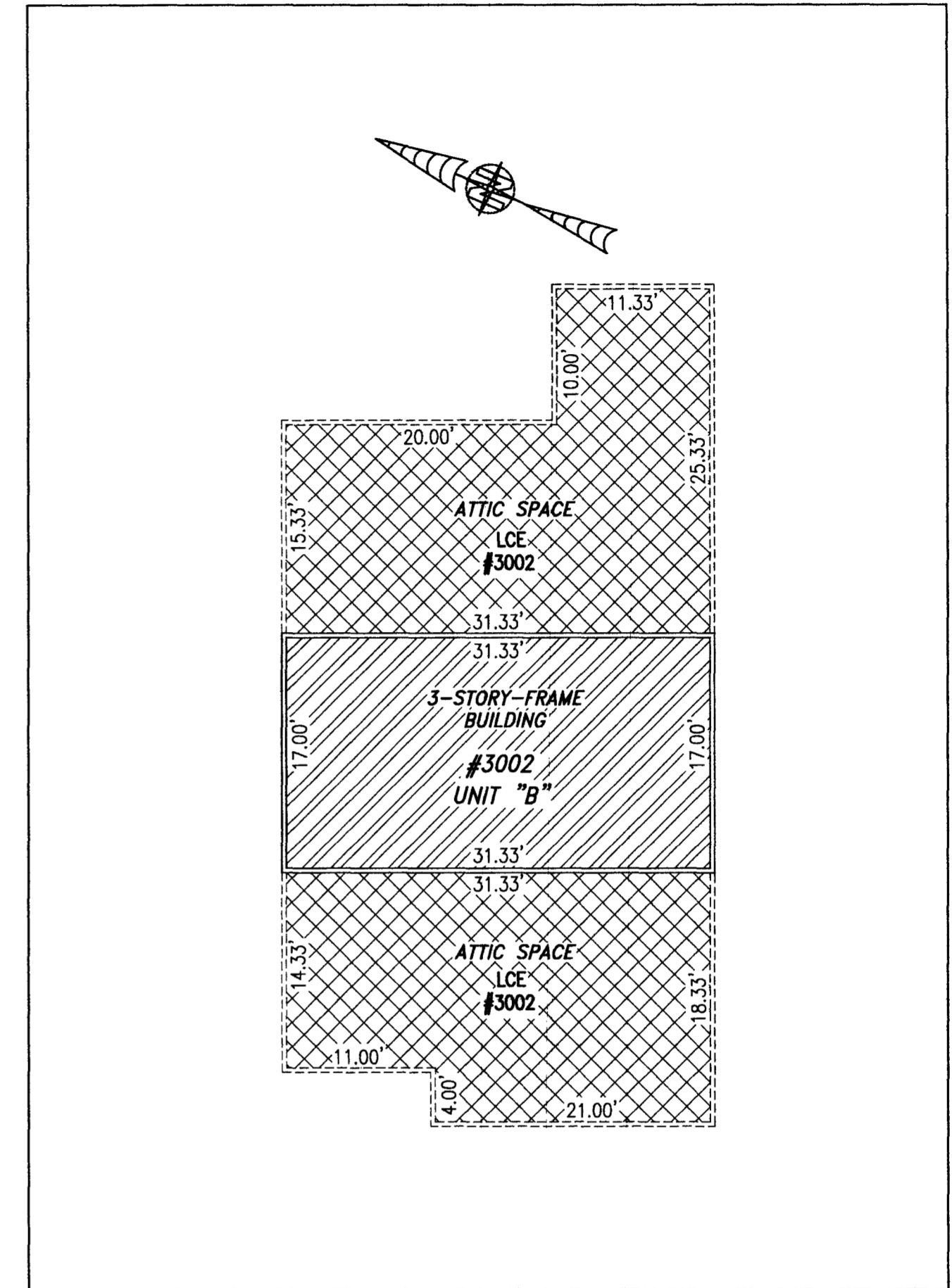
BUILDING 30 (DUPLEX)



FIRST FLOOR



SECOND FLOOR



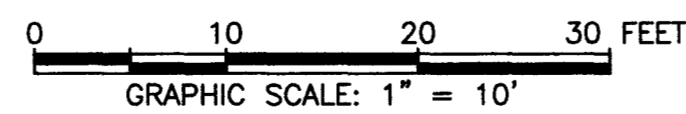
THIRD FLOOR

UNIT ID	UNIT DESCRIPTION	UNIT ADDRESS
A	-INDICATES AREA OF UNIT 3001	#3001 QUEENS PATH
B	-INDICATES AREA OF UNIT 3002	#3002 QUEENS PATH
	-INDICATES COMMON ELEMENT	
	-INDICATES LIMITED COMMON ELEMENT	

City of Williamsburg & County of James City  
 Circuit Court: This PLAT was recorded on  
 September 16, 2021  
 at 11:14 AM/PM, PG  
 Document # 210018750  
 MONA A. FOLEY, CLERK  
*Monica Foley*, Clerk

5 Large/Small Plat(s) Recorded  
 herewith as # 210018750

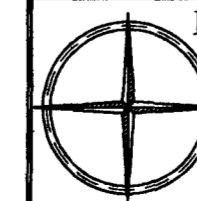
I HEREBY CERTIFY THAT THIS PLAT IS ACCURATE AND THAT IT  
 COMPLIES WITH THE PROVISIONS OF THE CODE OF VIRGINIA OF 1950  
 AS AMENDED, § 55.1-1920A & B AND I FURTHER CERTIFY THAT ALL  
 IMPROVEMENTS THEREOF DEPICTED HEREON, PURSUANT TO THE CODE  
 OF VIRGINIA § 55.1-1920B, ARE SUBSTANTIALLY COMPLETE.



THIS SHEET: FLOOR PLANS

PHASE 30  
 CONDOMINIUM PLAT AND PLAN  
 OF  
 THE PROMENADE  
 AT  
 JOHN TYLER  
 A CONDOMINIUM  
 JAMES CITY COUNTY, VIRGINIA

Job# 160921



Hayden Frye and Associates, Inc.  
 Land Surveyors  
 333 KELLAM ROAD, SUITE 200  
 VIRGINIA BEACH, VA, 23462  
 PH: (757) 491-7228 FX:(757) 491-7229

DATE: AUGUST 25, 2021  
 SCALE: 1"=10'  
 SHEET 5 OF 5 THIS PHASE