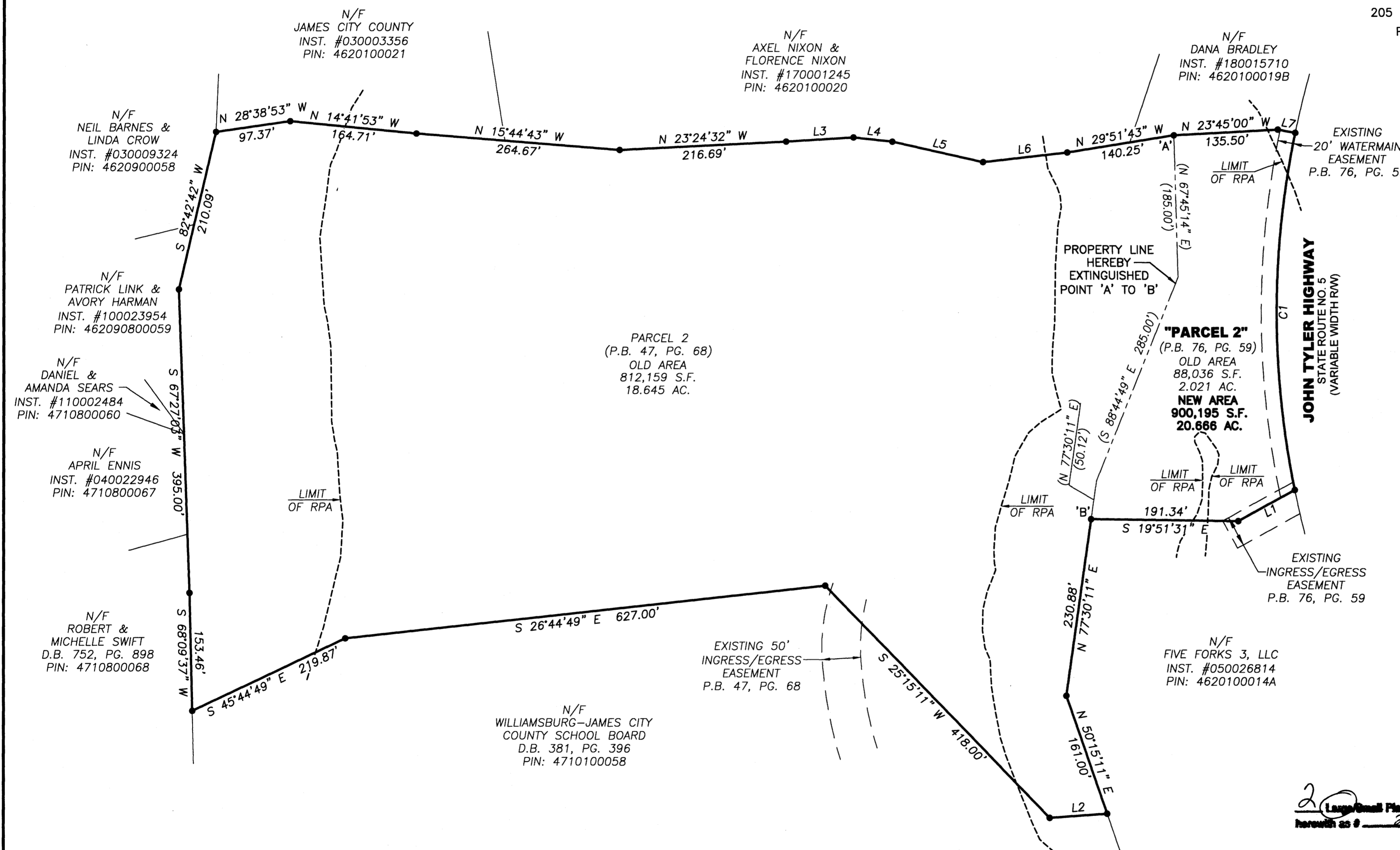
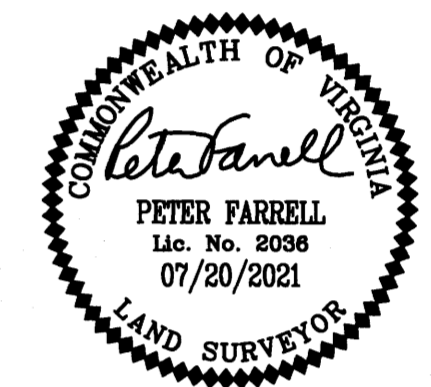


210016621

BOUNDARY LINE EXTINGUISHMENT  
 BETWEEN  
**PARCEL 2 (P.B. 47, PG. 68) &  
 "PARCEL 2" (P.B. 76, PG. 59)**  
 PROPERTY OF JAMES CITY SERVICE AUTHORITY  
 BERKELEY DISTRICT JAMES CITY COUNTY VIRGINIA  
 DATE: 07/20/2021 JOB # 21-281

**LandTech**  
 Resources, Inc.  
 Engineering & Surveying Consultants  
 205 Bulfants Blvd., Suite E, Williamsburg, Virginia 23188  
 Phone: (757) 565-1677 Fax: (757) 565-0782  
 web: landtechresources.com

SHEET 2 OF 2  
**JCC-S-21-0056**



LINE	BEARING	DISTANCE
L1	S 49°23'18" E	83.80'
L2	S 24°44'49" E	75.00'
L3	N 24°06'28" W	87.87'
L4	N 14°18'43" W	50.69'
L5	N 07°49'43" W	120.90'
L6	N 27°08'43" W	110.22'
L7	N 10°15'00" W	23.00'

NOTES:  
 A) LIMIT OF RPA (RESOURCE PROTECTION AREA) BASED ON JCC GIS MAPPING  
 B) PHYSICAL IMPROVEMENTS ARE NOT SHOWN

CURVE	RADIUS	ARC LENGTH	TANGENT	CHORD LENGTH	CHORD BEARING	DELTA ANGLE
C1	1145.92'	467.75'	237.18'	464.51'	N 69°31'22" E	23°23'14"

20 (Large/Small Plate(s) Recorded)  
 hereon as # 210016621

STATE OF VIRGINIA, JAMES CITY COUNTY  
 IN THE CLERKS OFFICE OF THE CIRCUIT COURT FOR THE COUNTY OF  
 JAMES CITY THIS 13<sup>th</sup> DAY OF August, 2021.  
 THIS PLAT WAS PRESENTED AND ADMITTED TO RECORD AS THE LAW  
 DIRECTS AT 1:35 pm  
 INSTRUMENT # 210016621  
 TESTE MONA A. FOLEY, CLERK