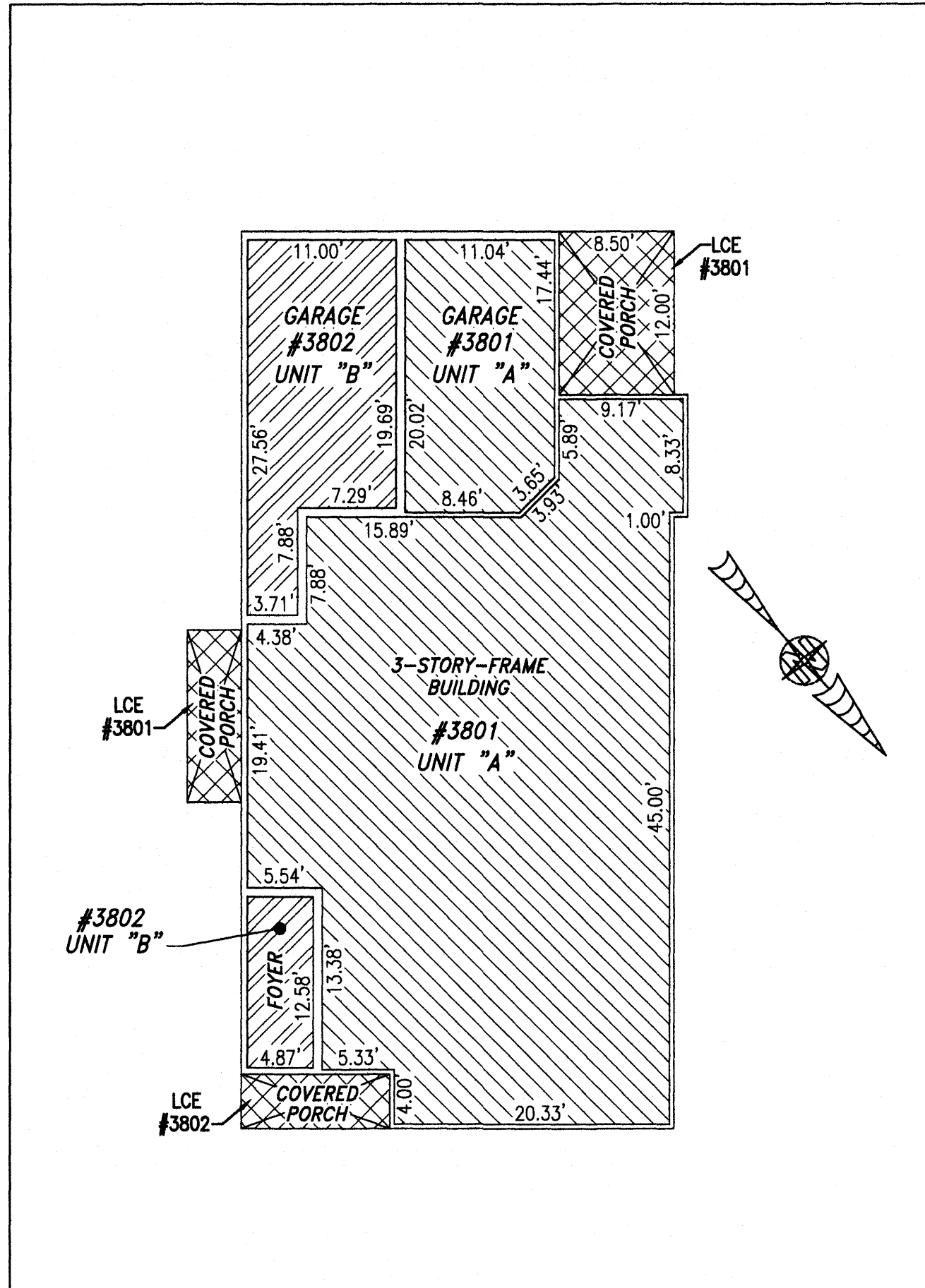
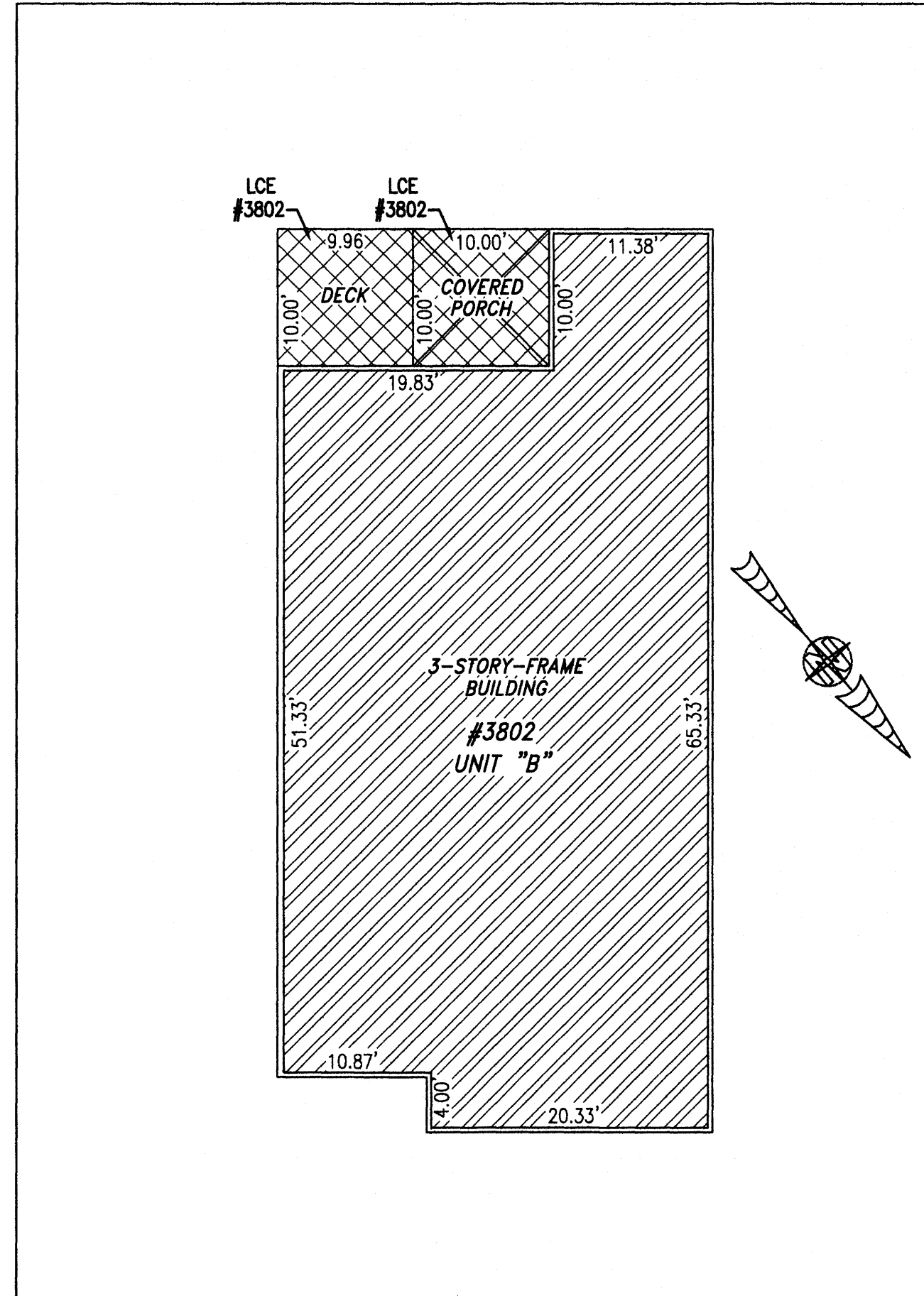


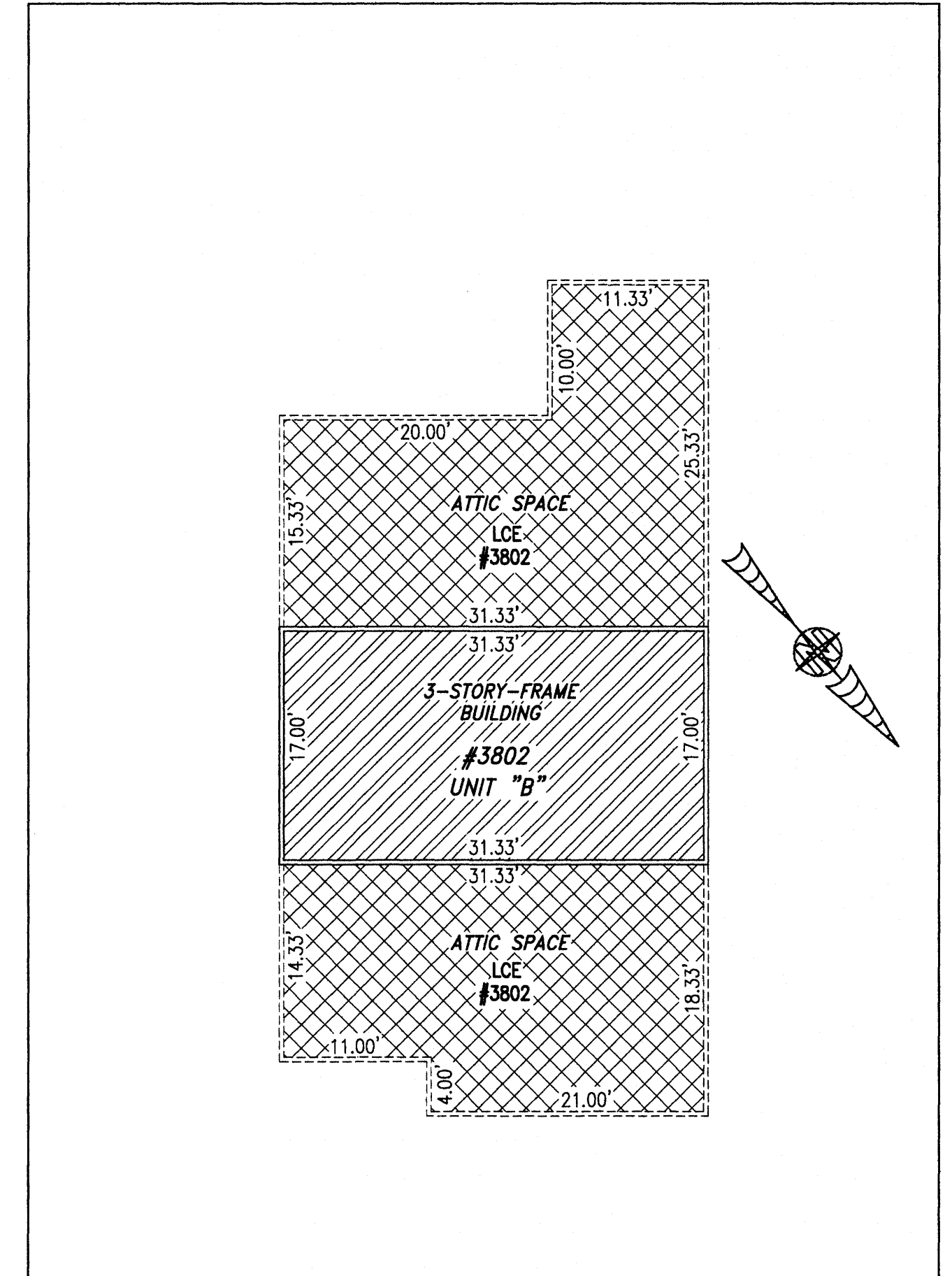
# BUILDING 38 (DUPLEX)



FIRST FLOOR



SECOND FLOOR



THIRD FLOOR

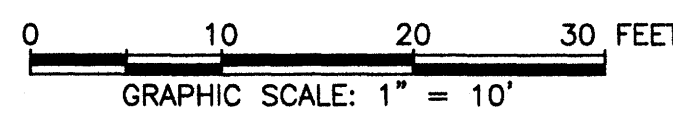
UNIT ID	UNIT DESCRIPTION	UNIT ADDRESS
A	-INDICATES AREA OF UNIT 3801	#3801 QUEENS PATH
B	-INDICATES AREA OF UNIT 3802	#3802 QUEENS PATH
	-INDICATES COMMON ELEMENT	
	-INDICATES LIMITED COMMON ELEMENT	

I HEREBY CERTIFY THAT THIS PLAT IS ACCURATE AND THAT IT COMPLIES WITH THE PROVISIONS OF THE CODE OF VIRGINIA OF 1950 AS AMENDED, § 55.1-1920A & B AND I FURTHER CERTIFY THAT ALL IMPROVEMENTS THEREOF DEPICTED HEREON, PURSUANT TO THE CODE OF VIRGINIA § 55.1-1920B, ARE SUBSTANTIALLY COMPLETE.

5 (Large/Small Plat(s) Recorded  
herein as # 210016359

City of Williamsburg & County of James City  
Circuit Court: This PLAT was recorded on  
August 10, 2021  
at 2:50 AM (PM) PB PG  
Document # 210016359  
MONA A. FOLEY, CLERK

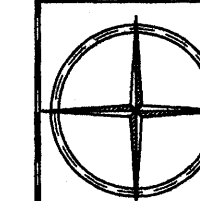
*Mona A. Foley*, Clerk



THIS SHEET: FLOOR PLANS

**PHASE 38**  
**CONDOMINIUM PLAT AND PLAN**  
OF  
**THE PROMENADE**  
AT  
**JOHN TYLER**  
A CONDOMINIUM  
JAMES CITY COUNTY, VIRGINIA

Jo# 160921



Hayden Frye and Associates, Inc.  
**Land Surveyors**

333 KELLAM ROAD, SUITE 200  
VIRGINIA BEACH, VA., 23462  
PH: (757) 491-7228 FX: (757) 491-7229

DATE: JULY 29, 2021

SCALE: 1"=10'

SHEET 5 OF 5 THIS PHASE