

210016270

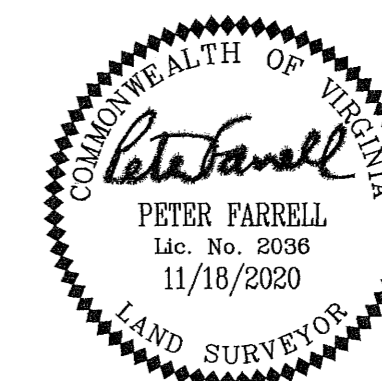
SUBDIVISION OF  
 PIN: #: 2020100027  
 LITTLE CREEK  
 LOTS 1 THROUGH 5

JAMES CITY COUNTY STONEHOUSE DISTRICT VIRGINIA  
 DATE: 11/18/2020 JOB # 18-295

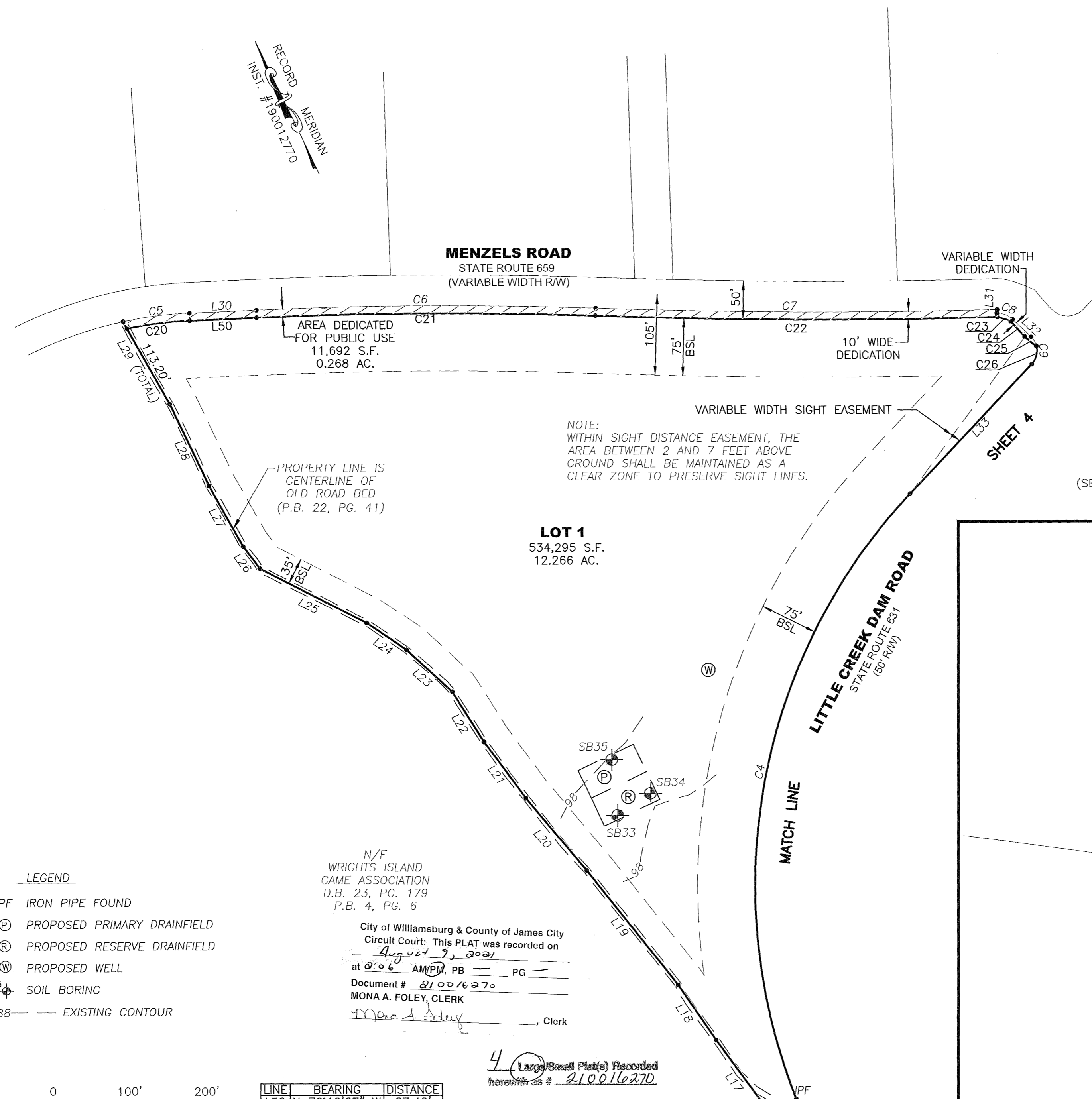
**LandTech**  
 Resources, Inc.

Engineering & Surveying Consultants  
 205 Bulfants Blvd., Suite E Williamsburg, Virginia 23188  
 Phone: (757) 565-1677 Fax: (757) 565-0782  
 web: landtechresources.com

SHEET 3 OF 4  
 JCC-S-20-0044



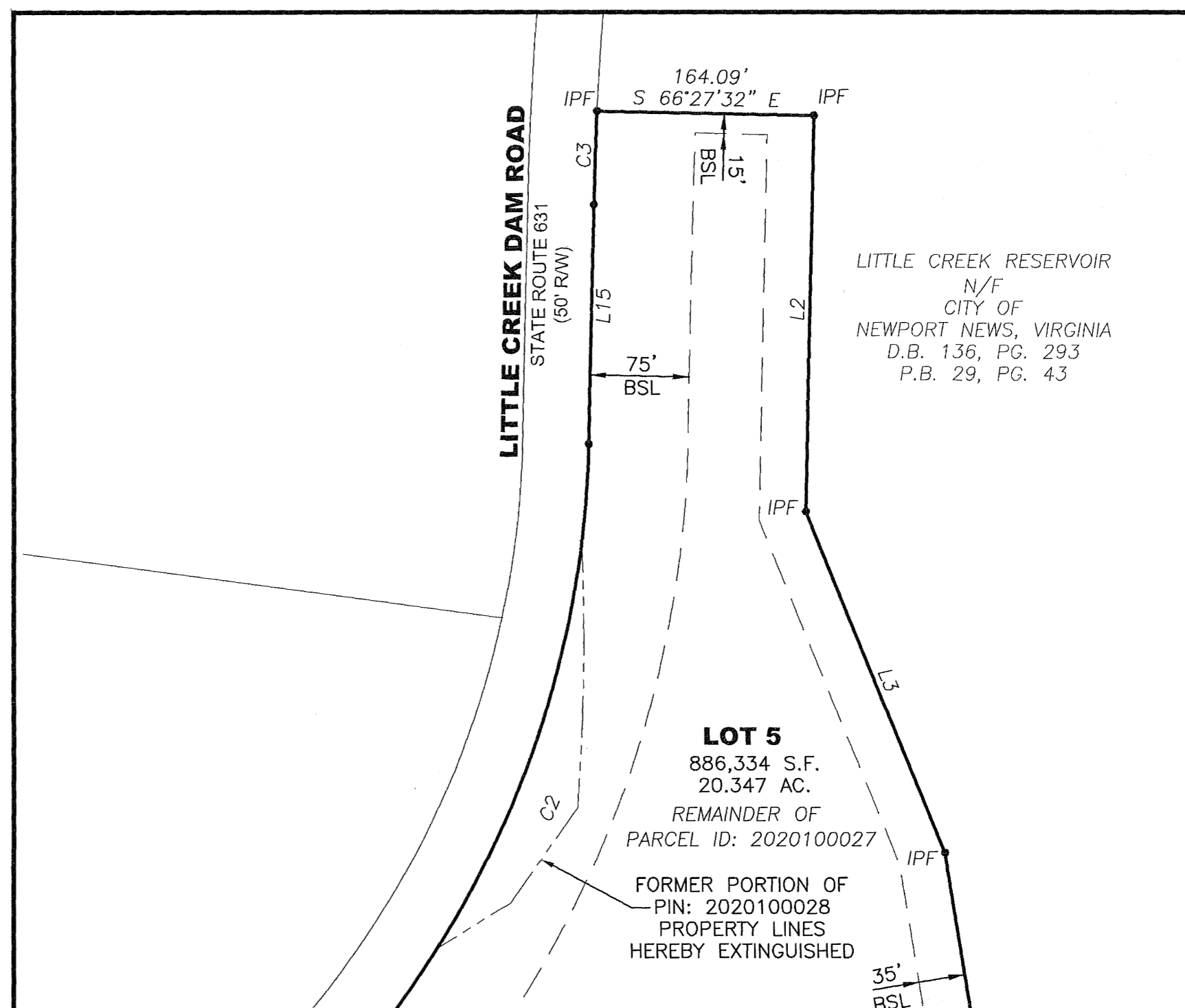
**LOT DETAIL**  
 (SEE SHEET 2 FOR OVERALL BOUNDARY)



LINE	BEARING	DISTANCE
L50	N 70°12'27" W	87.42'

CURVE	RADIUS	ARC LENGTH	CHORD LENGTH	CHORD BEARING	DELTA ANGLE
C20	516.82'	82.45'	82.37'	N 74°46'41" W	9°08'27"
C21	5552.04'	441.80'	441.69'	N 67°55'41" W	4°33'34"
C22	8437.30'	524.47'	524.39'	N 67°25'45" W	3°33'42"
C23	150.00'	18.70'	18.69'	N 50°07'10" W	7°08'31"
C24	423.83'	27.18'	27.17'	S 20°13'30" E	3°40'27"
C25	77.82'	19.27'	19.22'	S 29°11'52" E	14°11'08"
C26	25.00'	25.38'	24.31'	N 36°30'01" E	58°10'22"



LINE	BEARING	DISTANCE
L2	S 23°32'28" W	300.00'
L3	S 00°06'44" W	278.62'
L15	N 23°33'00" E	181.35'

CURVE	RADIUS	ARC LENGTH	CHORD LENGTH	CHORD BEARING	DELTA ANGLE
C2	745.00'	546.51'	534.33'	N 44°33'51" E	42°01'49"
C3	2475.03'	70.65'	70.65'	S 24°22'08" W	1°38'08"

