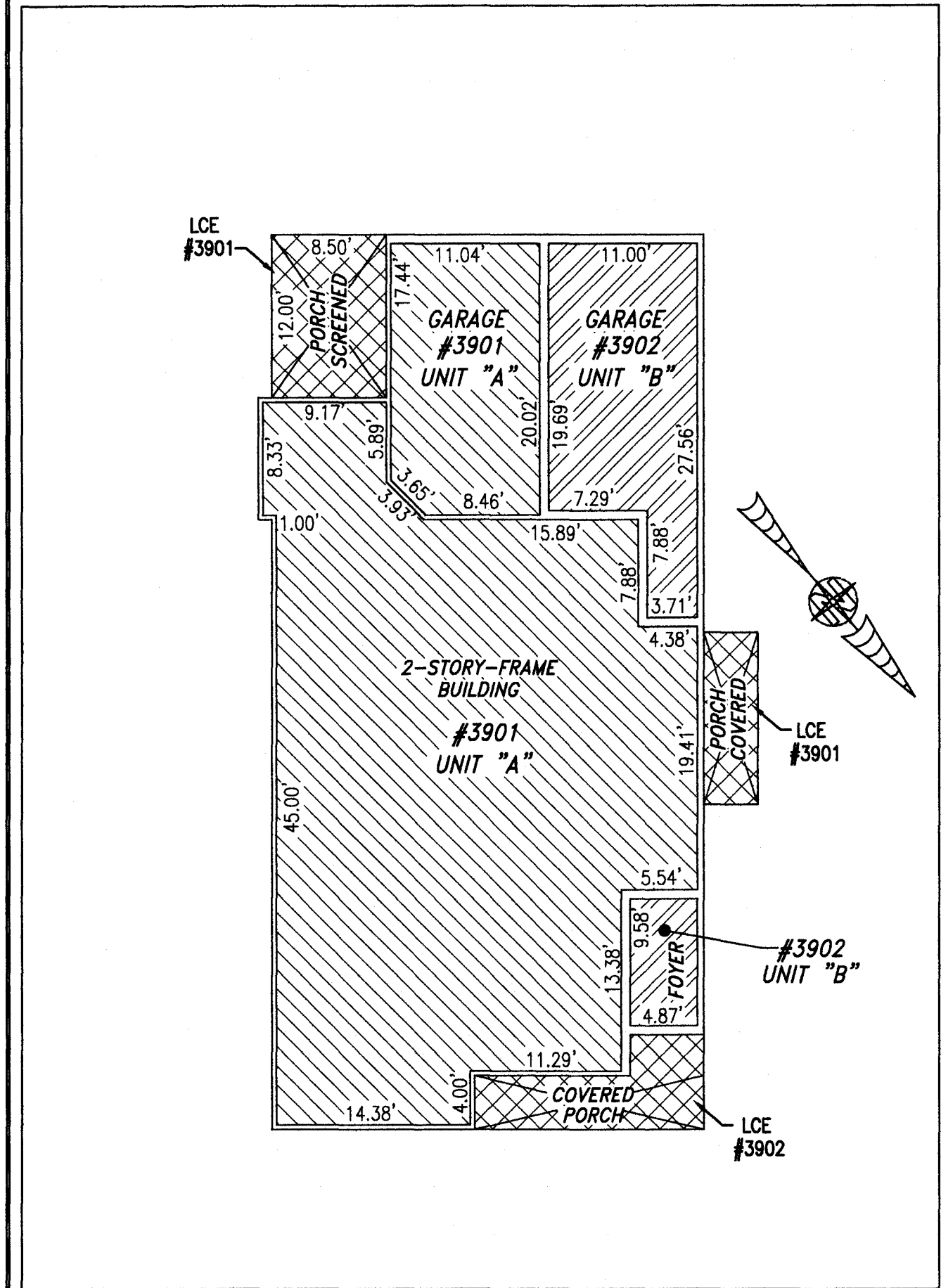
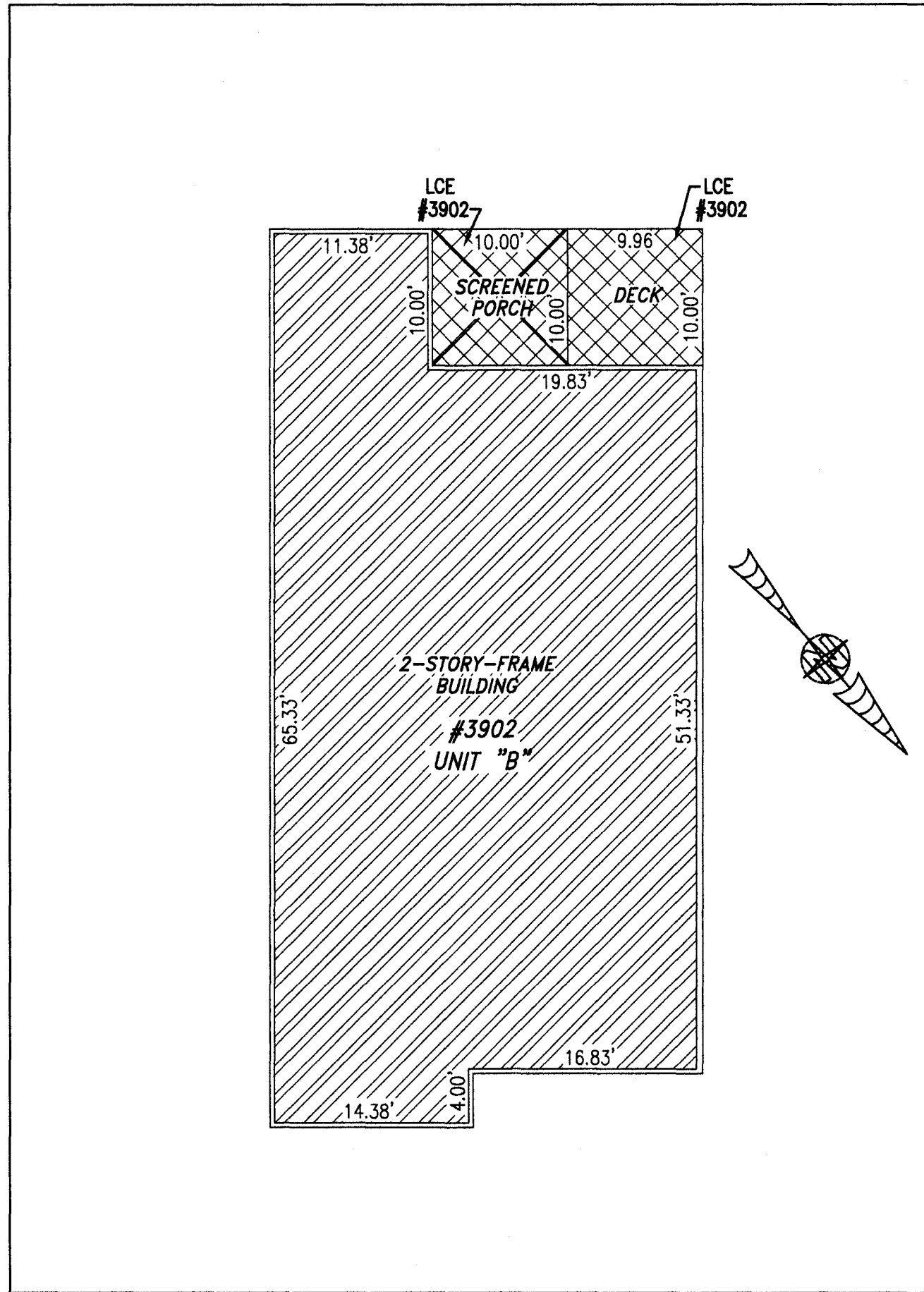


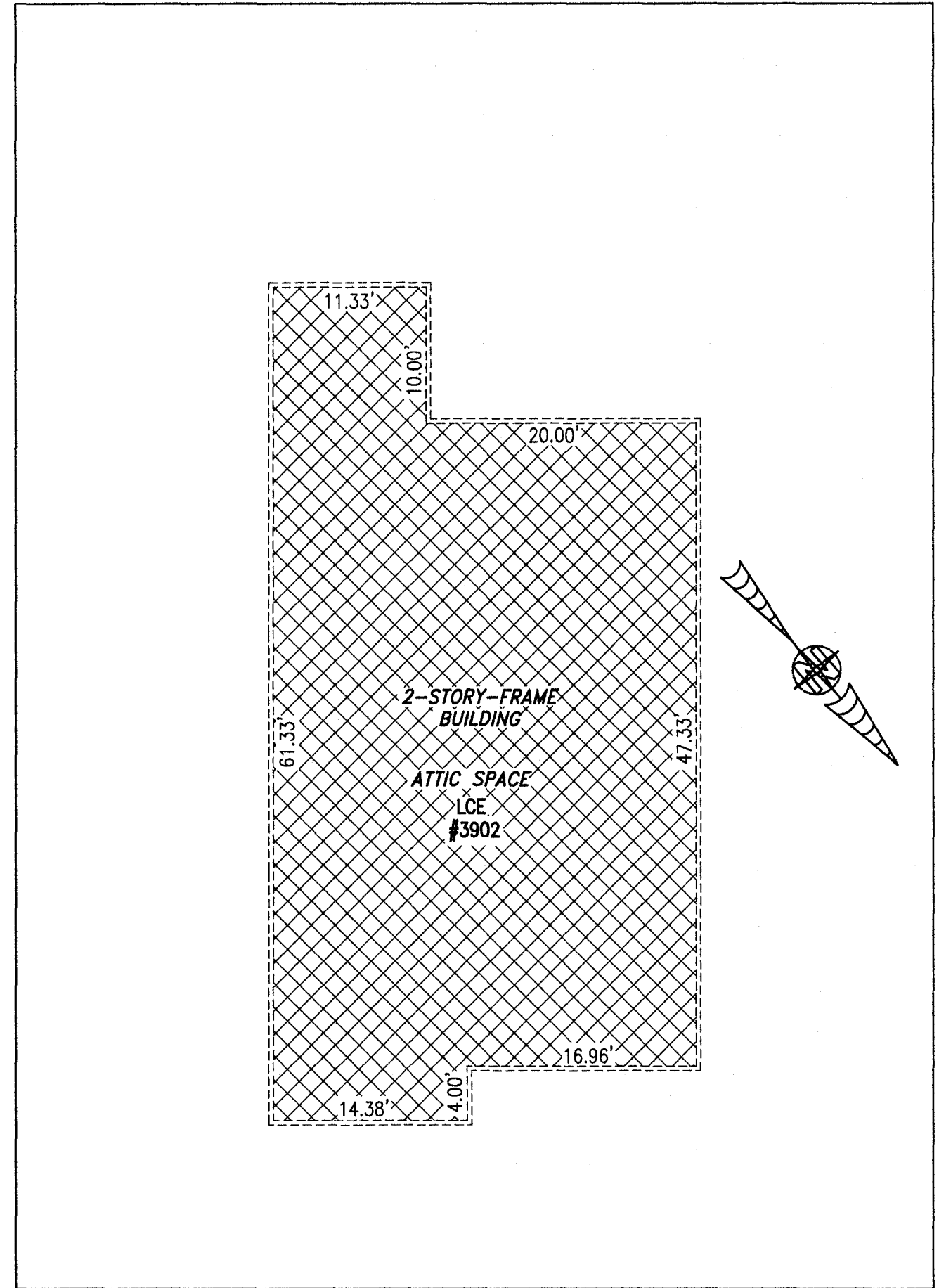
BUILDING 39 (DUPLIX)



FIRST FLOOR



SECOND FLOOR



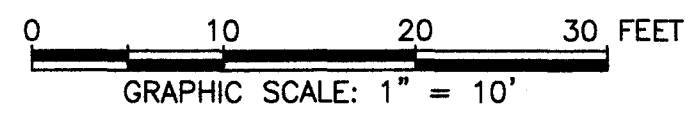
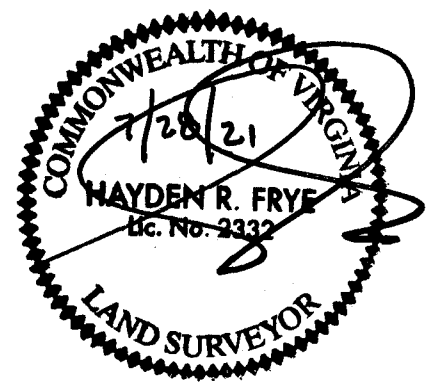
THIRD FLOOR

UNIT ID	UNIT DESCRIPTION	UNIT ADDRESS
A	-INDICATES AREA OF UNIT 3901	#3901 QUEENS PATH
B	-INDICATES AREA OF UNIT 3902	#3902 QUEENS PATH
	-INDICATES COMMON ELEMENT	
	-INDICATES LIMITED COMMON ELEMENT	

I HEREBY CERTIFY THAT THIS PLAT IS ACCURATE AND THAT IT COMPLIES WITH THE PROVISIONS OF THE CODE OF VIRGINIA OF 1950 AS AMENDED, § 55.1-1920A & B AND I FURTHER CERTIFY THAT ALL IMPROVEMENTS THEREOF DEPICTED HEREON, PURSUANT TO THE CODE OF VIRGINIA § 55.1-1920B, ARE SUBSTANTIALLY COMPLETE.

5 (Large) Small Plat(s) Recorded
herewith as # 210015812

City of Williamsburg & County of James City
Circuit Court: This PLAT was recorded on
August 2, 2021
at 2:14 AM PM PB PG
Document # 210015812
MONA A. FOLEY, CLERK
Mona A. Foley, Clerk



THIS SHEET: FLOOR PLANS

PHASE 39
CONDOMINIUM PLAT AND PLAN
OF
THE PROMENADE
AT
JOHN TYLER
A CONDOMINIUM
JAMES CITY COUNTY, VIRGINIA

Jo# 160921

Hayden Frye and Associates, Inc.
Land Surveyors
333 KELLAM ROAD, SUITE 200
VIRGINIA BEACH, VA., 23462
PH: (757) 491-7228 FX: (757) 491-7229

DATE: JULY 27, 2021
SCALE: 1"=10'
SHEET 5 OF 5 THIS PHASE