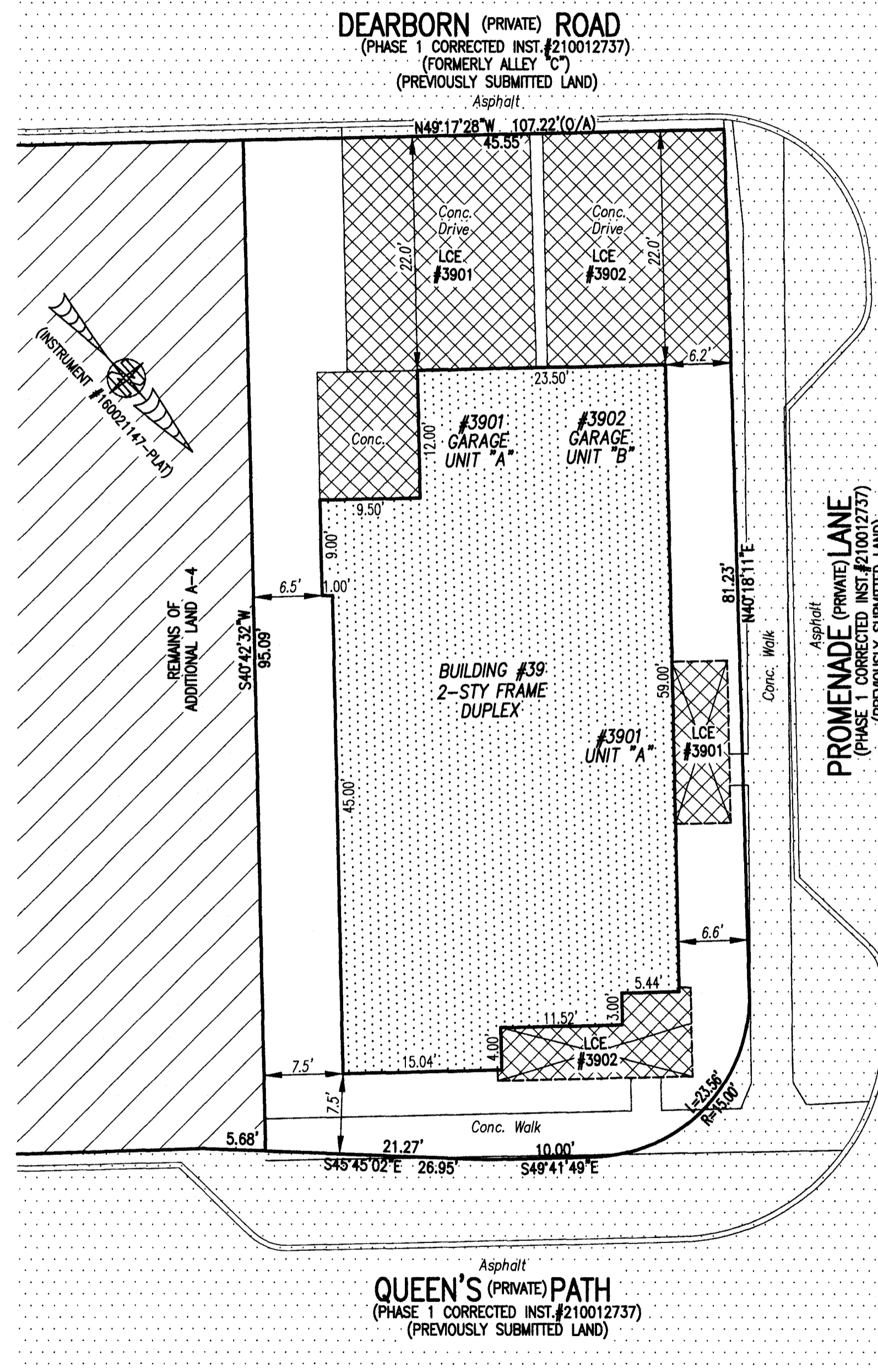


I HEREBY CERTIFY THAT THIS PLAT IS ACCURATE AND THAT IT COMPLIES WITH THE PROVISIONS OF THE CODE OF VIRGINIA OF 1950 AS AMENDED, § 55.1-1920A & B AND I FURTHER CERTIFY THAT ALL IMPROVEMENTS THEREOF DEPICTED HEREON, PURSUANT TO THE CODE OF VIRGINIA § 55.1-1920A, ARE SUBSTANTIALLY COMPLETE.



- INDICATES PREVIOUSLY SUBMITTED LAND
 - INDICATES BUILDING AREA (SEE PLANS FOR UNIT DIMENSIONS)
 - INDICATES LIMITED COMMON ELEMENT (LCE) ASSIGNED TO A UNIT # UNIT ASSIGNED
 - INDICATES COMMON ELEMENT (EXCLUDING AREAS OUTSIDE SUBMITTED LAND)
 - INDICATES ADDITIONAL LAND
- LCE #1000 (EXAMPLE UNIT #)

5 Large Small Plat(s) Recorded
herewith as # 210015812

City of Williamsburg & County of James City
Circuit Court: This PLAT was recorded on
August 2, 2021
at 2:14 AM/PM PB PG
Document # 210015812
MONA A. FOLEY, CLERK
Mona A. Foley, Clerk

THIS SHEET: BUILDING DETAIL

PHASE 39
CONDOMINIUM PLAT AND PLAN
OF
THE PROMENADE
AT
JOHN TYLER
A CONDOMINIUM
JAMES CITY COUNTY, VIRGINIA

Jo# 160921
Hayden Frye and Associates, Inc.
Land Surveyors
333 KELLAM ROAD, SUITE 200
VIRGINIA BEACH, VA., 23462
PH: (757) 491-7228 FX: (757) 491-7229
DATE: JULY 27, 2021
SCALE: 1"=10'
SHEET 3 OF 5 THIS PHASE

