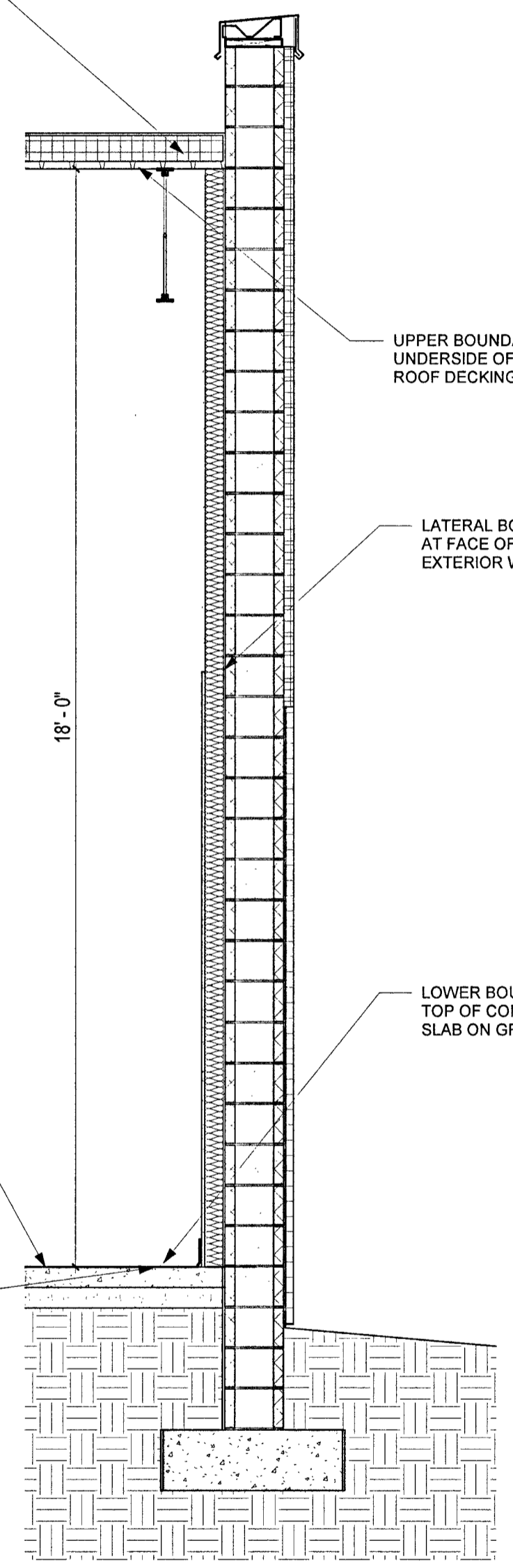


2100/4456

GuernseyTingle
757-220-0220 Williamsburg, VA
guernseytingle.com
This is a public record. Any reproduction or distribution of this record is prohibited by law.

EXISTING LOW-SLOPE ROOFING SYSTEM ON METAL ROOF DECKING ON STEEL STRUCTURE.



UPPER BOUNDARY AT UNDERSIDE OF METAL ROOF DECKING

LATERAL BOUNDARY AT FACE OF CMU ON EXTERIOR WALL

LOWER BOUNDARY AT TOP OF CONCRETE SLAB ON GRADE

FINISHED FLOOR ELEVATION IS 116.38'

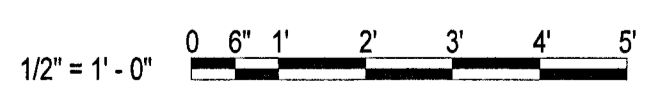
ELEVATIONS SHOWN ARE BASED ON NAVD88 DATUM.

EXISTING CONCRETE SLAB

EXHIBIT E 115 NORGE LANE, A CONDOMINIUM

TYPICAL WALL SECTION 1/2" = 1'-0"

5 Large/Small Plat(s) Recorded
herewith as #2100/4456



KENSINGTON SCHOOL

WILLIAMSBURG, VA 23188

CONDO SECTIONS

Date: 5/26/21
Drawn: BAS
Checked: Checker
Project: 221038

A2

4 of 5

City of Williamsburg & County of James City
Circuit Court: This PLAT was recorded on
July 19, 2021
at 9:03 AM/PM, PB PG
Document # 2100/4456
MONA A. FOLEY, CLERK
Mona A. Foley, Clerk

Printed on: 7/12/2021 12:47:06 PM