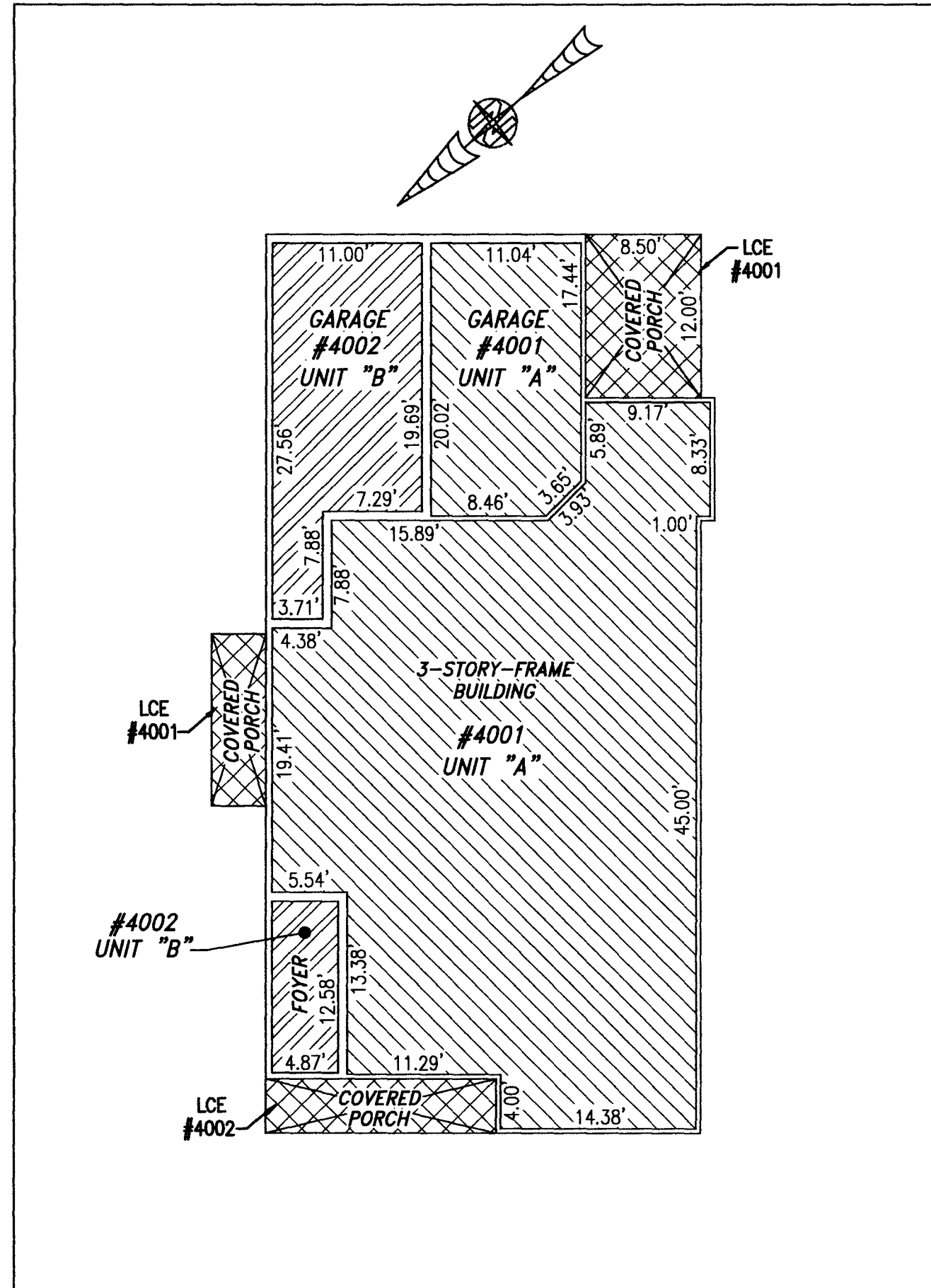
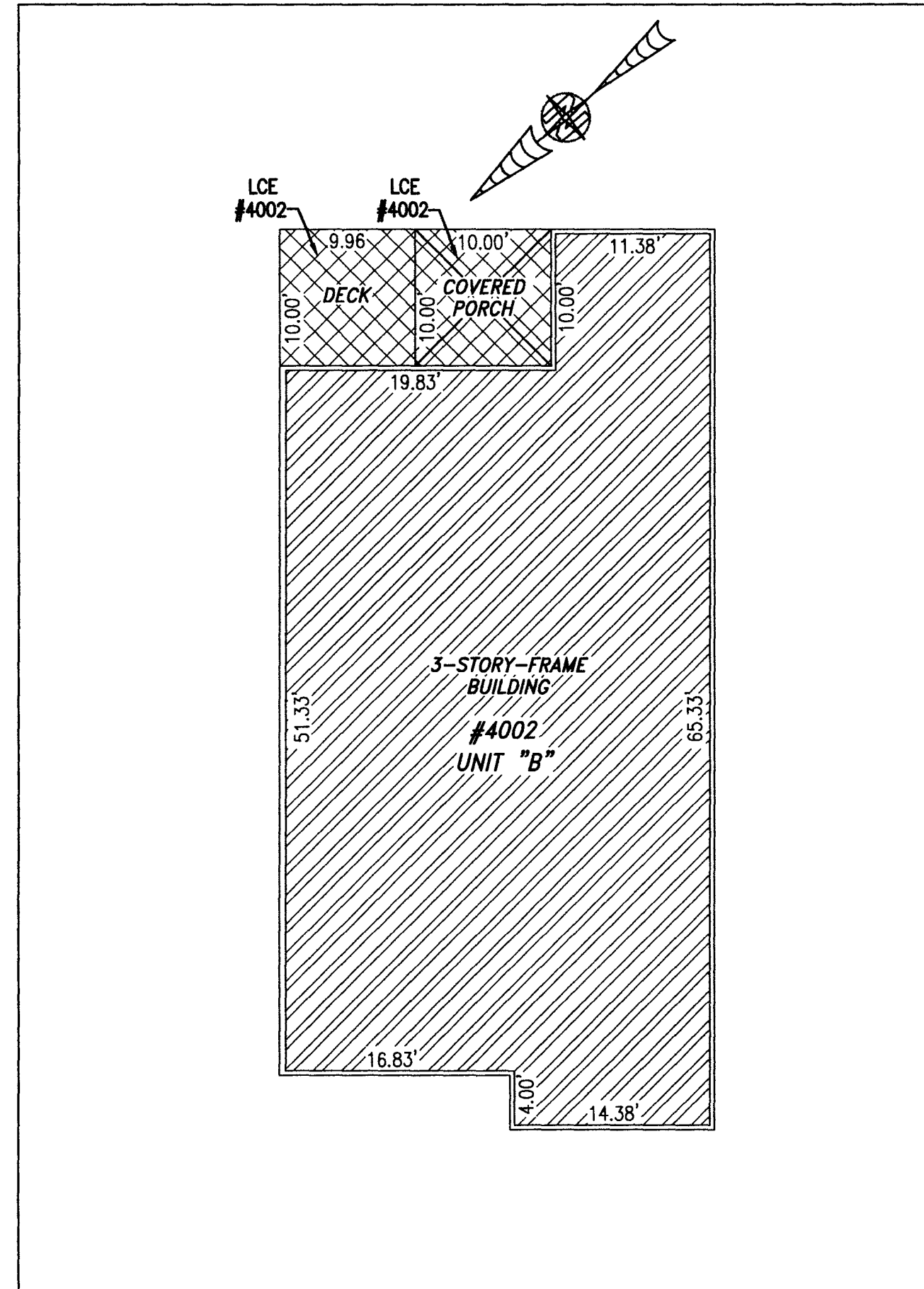


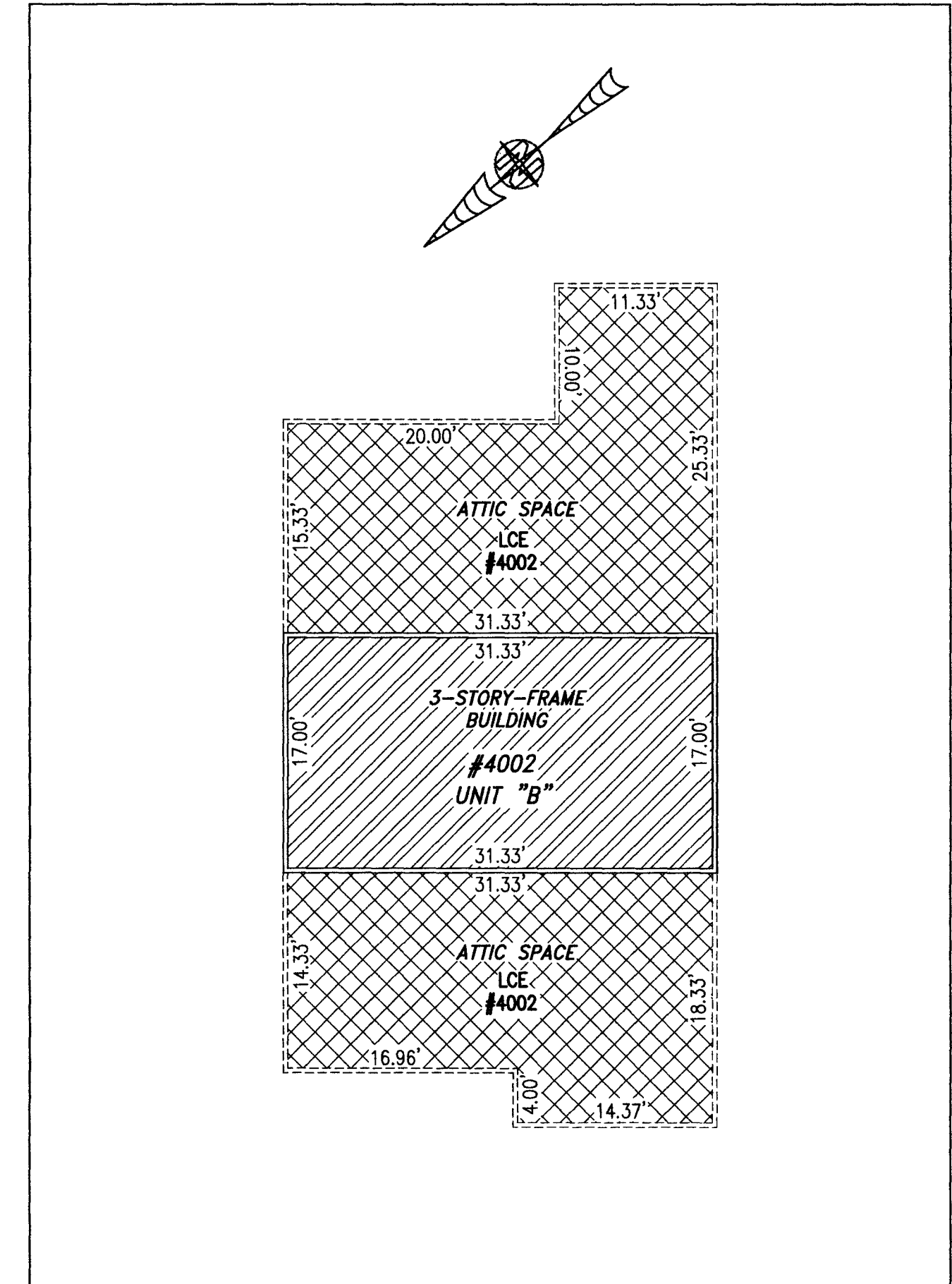
BUILDING 40 (DUPLEX)



FIRST FLOOR



SECOND FLOOR



THIRD FLOOR

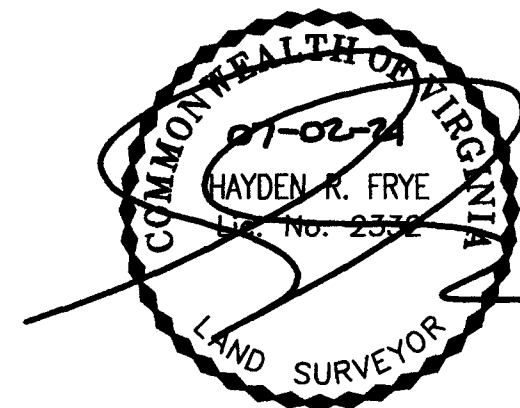
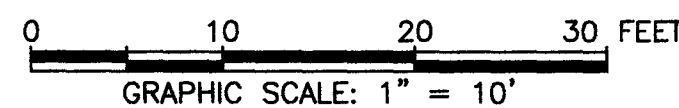
UNIT ID	UNIT DESCRIPTION	UNIT ADDRESS
A	-INDICATES AREA OF UNIT 4001	#4001 PROMENADE LANE
B	-INDICATES AREA OF UNIT 4002	#4002 PROMENADE LANE
	-INDICATES COMMON ELEMENT	
	-INDICATES LIMITED COMMON ELEMENT	

I HEREBY CERTIFY THAT THIS PLAT IS ACCURATE AND THAT IT COMPLIES WITH THE PROVISIONS OF THE CODE OF VIRGINIA OF 1950 AS AMENDED, § 55.1-1920A & B AND I FURTHER CERTIFY THAT ALL IMPROVEMENTS THEREOF DEPICTED HEREON, PURSUANT TO THE CODE OF VIRGINIA § 55.1-1920B, ARE SUBSTANTIALLY COMPLETE.

5 Large Small Plat(s) Recorded
herewith as # 210013875

City of Williamsburg & County of James City
Circuit Court: This PLAT was recorded on
July 9, 2021
at 1:41 AM PM PG
Document # 210013875
MONA A. FOLEY, CLERK

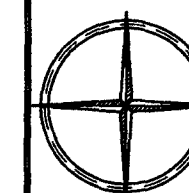
Mona A. Foley, Clerk



THIS SHEET: FLOOR PLANS

PHASE 40
CONDOMINIUM PLAT AND PLAN
OF
THE PROMENADE
AT
JOHN TYLER
A CONDOMINIUM
JAMES CITY COUNTY, VIRGINIA

Jo# 160921



Hayden Frye and Associates, Inc.
Land Surveyors
333 KELLAM ROAD, SUITE 200
VIRGINIA BEACH, VA, 23462
PH: (757) 491-7228 FX: (757) 491-7229

DATE: JUNE 29, 2021
SCALE: 1"=10'
SHEET 5 OF 5 THIS PHASE