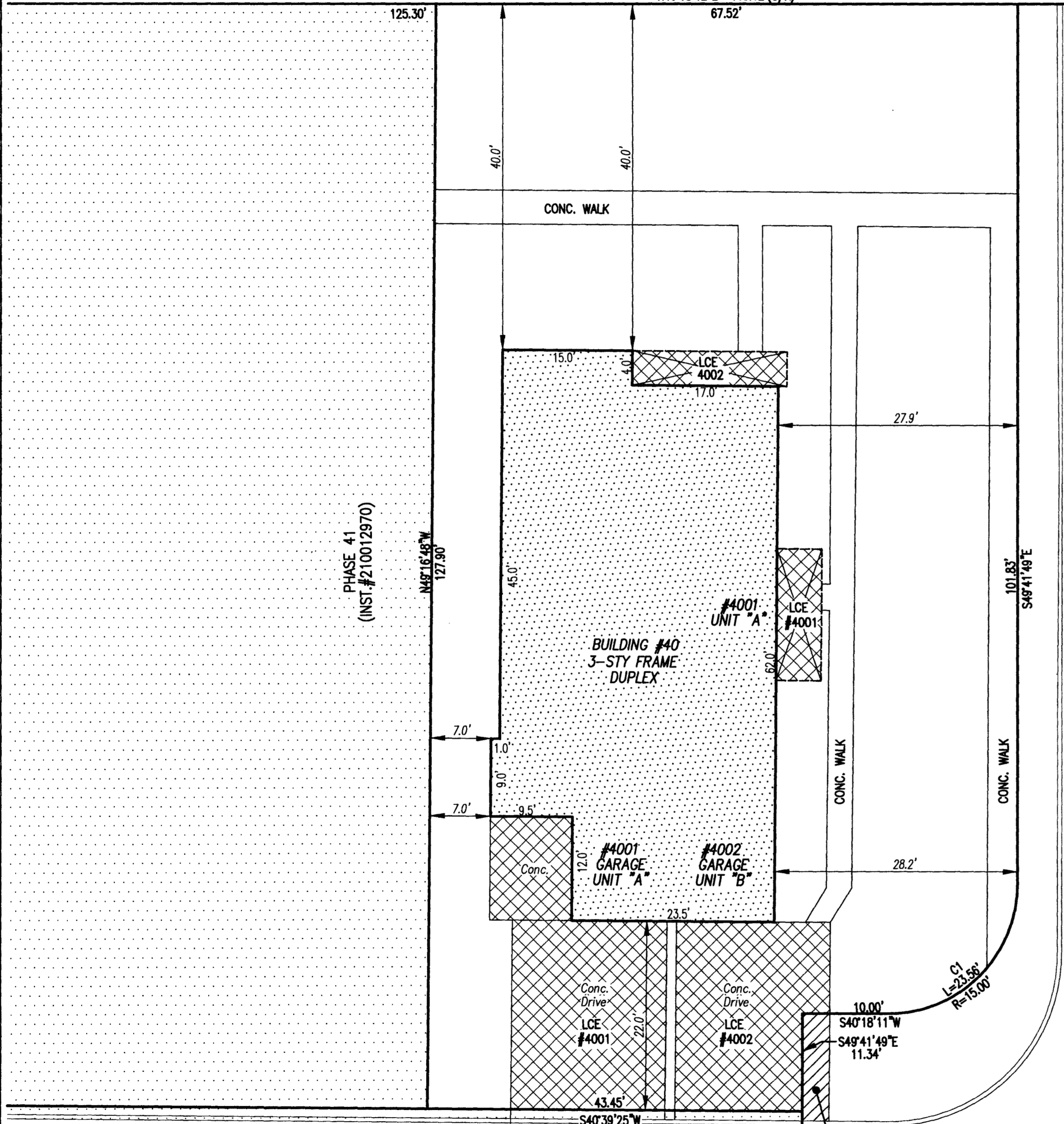
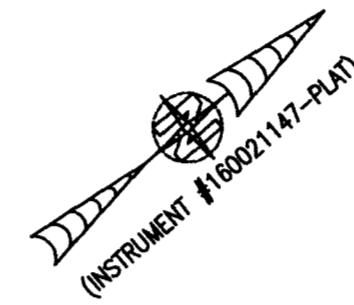
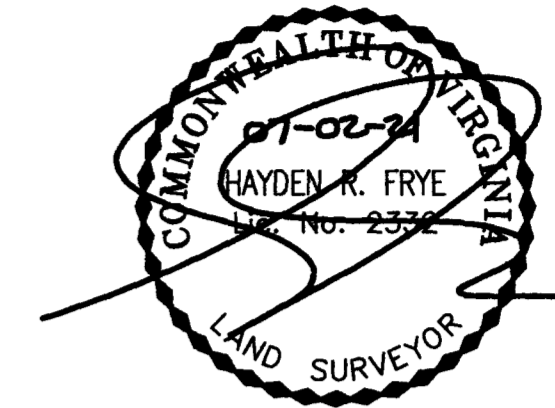
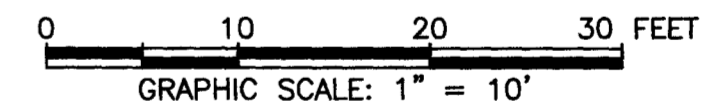


NOW OR FORMERLY  
WILLIAMSBURG RIVERSIDE  
MEDICAL COMPLEX, LLC  
GPIN: 4812200022  
(INST. #070031326)  
(P.B. 67, P. 37)  
N40°18'12"E 440.12'(O/A)

I HEREBY CERTIFY THAT THIS PLAT IS ACCURATE AND THAT IT COMPLIES WITH THE PROVISIONS OF THE CODE OF VIRGINIA OF 1950 AS AMENDED, § 55.1-1920A & B AND I FURTHER CERTIFY THAT ALL IMPROVEMENTS THEREOF DEPICTED HEREON, PURSUANT TO THE CODE OF VIRGINIA § 55.1-1920A, ARE SUBSTANTIALLY COMPLETE.



- INDICATES PREVIOUSLY SUBMITTED LAND
- INDICATES BUILDING AREA (SEE PLANS FOR UNIT DIMENSIONS)
- INDICATES LIMITED COMMON ELEMENT (LCE) ASSIGNED TO A UNIT # UNIT ASSIGNED
- INDICATES COMMON ELEMENT (EXCLUDING AREAS OUTSIDE SUBMITTED LAND)
- INDICATES ADDITIONAL LAND



QUEENS (50' PUBLIC R/W) PATH  
(INST. #160021147-PLAT)

THIS SHEET: BUILDING DETAIL

**PHASE 40**  
**CONDOMINIUM PLAT AND PLAN**  
OF  
**THE PROMENADE**  
AT  
**JOHN TYLER**  
A CONDOMINIUM  
JAMES CITY COUNTY, VIRGINIA

**PROMENADE (PRIVATE) LANE**  
(PHASE 1 CORRECTED INST. #210012737)  
(PREVIOUSLY SUBMITTED LAND)

THE PORTION OF THE DRIVEWAY LOCATED IN THE PUBLIC RIGHT-OF-WAY SHALL BE TREATED AS LIMITED COMMON ELEMENT (LCE) FOR PURPOSES OF THE ASSOCIATION'S RESPONSIBILITY TO MAINTAIN, REPAIR, REPLACE, AND FOR ANY OTHER REFERENCES TO LCE IN THE CONDOMINIUM INSTRUMENTS.

5 Large/Small Plat(s) Recorded  
herewith as # 210013875

City of Williamsburg & County of James City  
Circuit Court: This PLAT was recorded on  
July 2, 2021  
at 8:41 AM/PM PB PG  
Document # 210013875  
MONA A. FOLEY, CLERK  
Mona A. Foley, Clerk

Hayden Frye and Associates, Inc.  
**Land Surveyors**  
333 KELLAM ROAD, SUITE 200  
VIRGINIA BEACH, VA, 23462  
PH: (757) 491-7228 FX: (757) 491-7229  
DATE: JUNE 29, 2021  
SCALE: 1"=10'  
SHEET 3 OF 5 THIS PHASE

