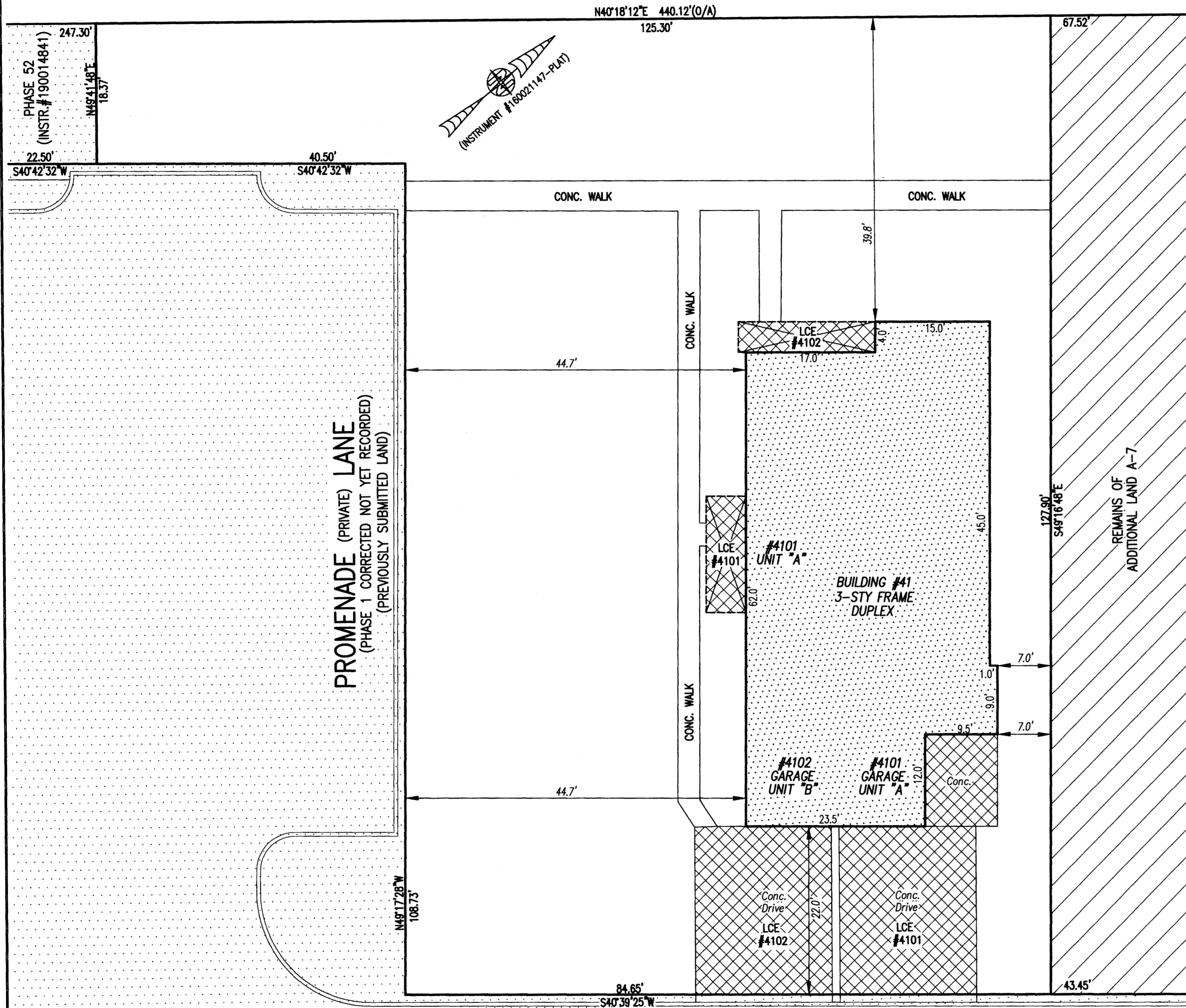


210012970

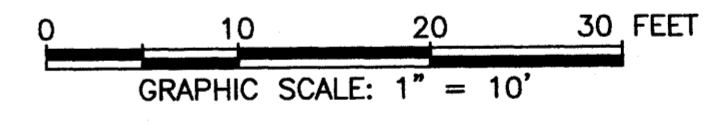
I HEREBY CERTIFY THAT THIS PLAT IS ACCURATE AND THAT IT COMPLIES WITH THE PROVISIONS OF THE CODE OF VIRGINIA OF 1950 AS AMENDED, § 55.1-1920A & B AND I FURTHER CERTIFY THAT ALL IMPROVEMENTS THEREOF DEPICTED HEREON, PURSUANT TO THE CODE OF VIRGINIA § 55.1-1920A, ARE SUBSTANTIALLY COMPLETE.



- INDICATES PREVIOUSLY SUBMITTED LAND
- INDICATES BUILDING AREA (SEE PLANS FOR UNIT DIMENSIONS)
- INDICATES LIMITED COMMON ELEMENT (LCE) ASSIGNED TO A UNIT # UNIT ASSIGNED
- INDICATES COMMON ELEMENT (EXCLUDING AREAS OUTSIDE SUBMITTED LAND)
- INDICATES ADDITIONAL LAND

City of Williamsburg & County of James City  
 Circuit Court: This PLAT was recorded on  
 6-25-2021  
 at 2:07 AM/PM, PG  
 Document # 210012970  
 MONA A. FOLEY, CLERK  
*Monica Foley*, Clerk

5 Large/Small Plat(s) Recorded  
 herewith as # 210012970



THIS SHEET: BUILDING DETAIL

**PHASE 41**  
**CONDOMINIUM PLAT AND PLAN**  
 OF  
**THE PROMENADE**  
 AT  
**JOHN TYLER**  
 A CONDOMINIUM  
 JAMES CITY COUNTY, VIRGINIA

Jo# 160921  
 Hayden Frye and Associates, Inc.  
**Land Surveyors**  
 333 KELLAM ROAD, SUITE 200  
 VIRGINIA BEACH, VA., 23462  
 PH: (757) 491-7228 FX: (757) 491-7229

DATE: JUNE 10, 2021  
 SCALE: 1"=10'  
 SHEET 3 OF 5 THIS PHASE

**PROMENADE (PRIVATE) LANE**  
 (PHASE 1 CORRECTED NOT YET RECORDED)  
 (PREVIOUSLY SUBMITTED LAND)