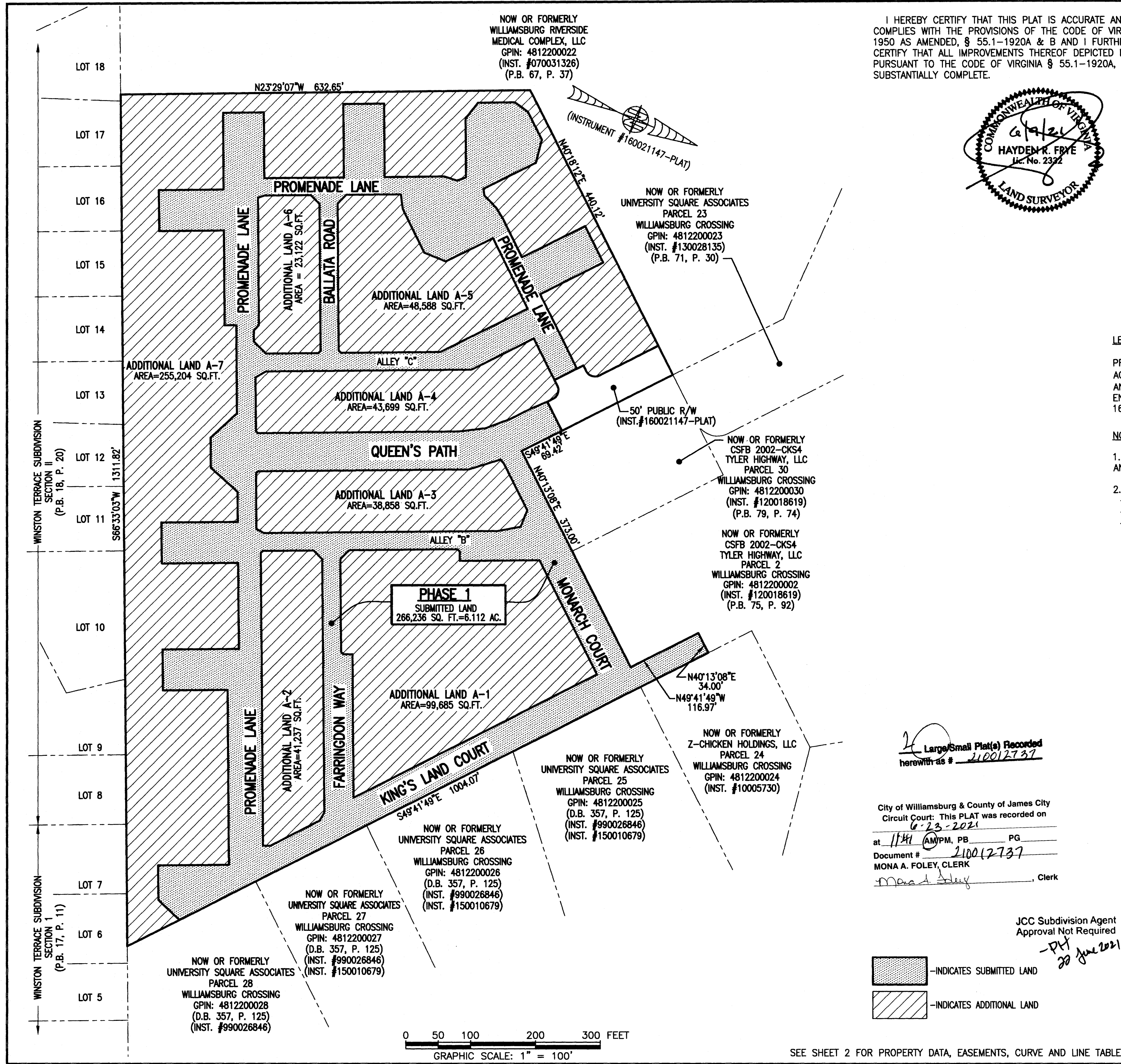
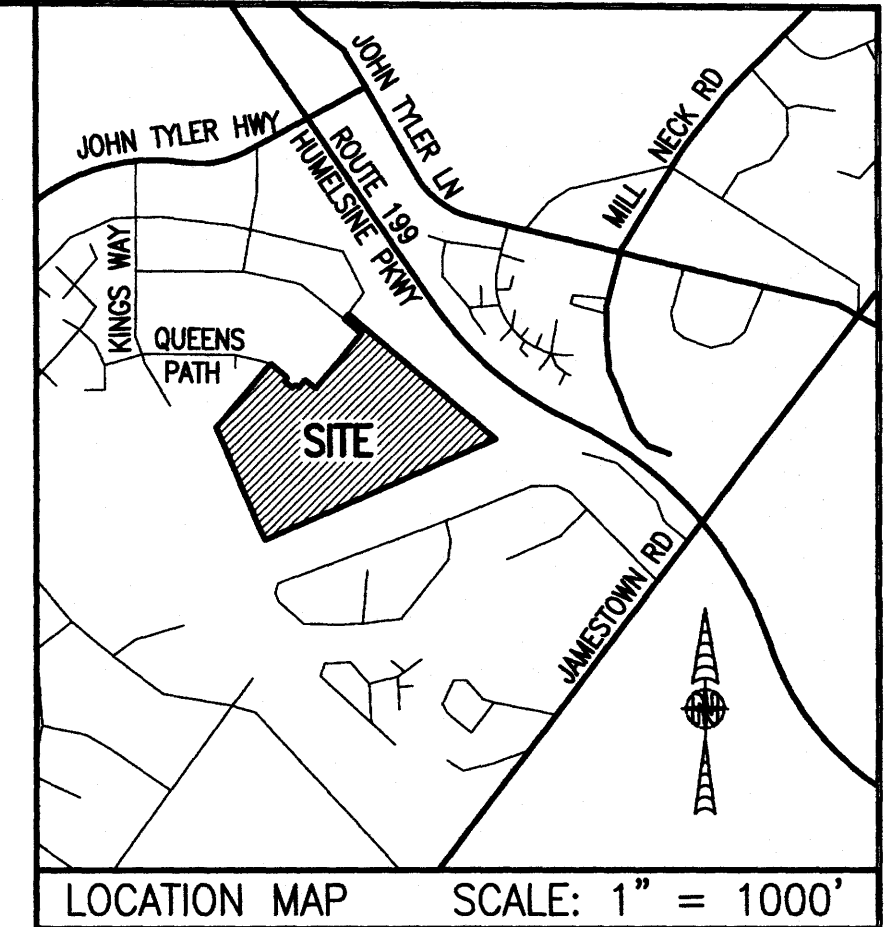


210012737

I HEREBY CERTIFY THAT THIS PLAT IS ACCURATE AND THAT IT COMPLIES WITH THE PROVISIONS OF THE CODE OF VIRGINIA OF 1950 AS AMENDED, § 55.1-1920A & B AND I FURTHER CERTIFY THAT ALL IMPROVEMENTS THEREOF DEPICTED HEREON, PURSUANT TO THE CODE OF VIRGINIA § 55.1-1920A, ARE SUBSTANTIALLY COMPLETE.



LEGAL DESCRIPTION

PROPERTY SHOWN HEREON BEING "NEW PARCEL 29" CONTAINING 18.747 ACRES AS SHOWN ON "PLAT OF LOT LINE EXTINGUISHMENT BEING PARCELS 20 AND 29 OF WILLIAMSBURG CROSSING" PREPARED BY AES CONSULTING ENGINEERS, DATED 10-24-16 AND RECORDED AS INSTRUMENT NO. 160021147.

NOTES:

1. PHASE 1 SUBMITTED LAND AS SHOWN HEREON CONTAINS ALL PRIVATE ROADS AND ON-STREET PARKING. NO BUILDINGS ARE INCLUDED IN THIS PHASE.
2. EASEMENTS AND BUILDING LINES SHOWN HEREON PER THE FOLLOWING:
 - ALTA SURVEY BY AES CONSULTING ENGINEERS, DATED 3-23-15
 - PLAT BY AES CONSULTING ENGINEERS, DATED 10-24-16, INST. #160021147
 - PLAN OF DEVELOPMENT BY AES CONSULTING ENGINEERS, DATED 9-8-16

AREA TABLE		
PARCEL	SQUARE FEET	ACRES
PHASE 1 (SUBMITTED LAND)	266,236	6.112 *
ADDITIONAL LAND A-1	99,685	2.289
ADDITIONAL LAND A-2	41,237	0.947
ADDITIONAL LAND A-3	38,858	0.892
ADDITIONAL LAND A-4	43,699	1.003
ADDITIONAL LAND A-5	48,588	1.115
ADDITIONAL LAND A-6	23,122	0.531
ADDITIONAL LAND A-7	255,204	5.858 *
TOTAL: NEW PARCEL 29	816,629	18.747

* THE EXPRESS PURPOSE OF THIS CORRECTED PLAT IS TO REVISE THE PREVIOUSLY SUBMITTED PHASE 1 TO REFLECT THE ASBUILT CONDITIONS.

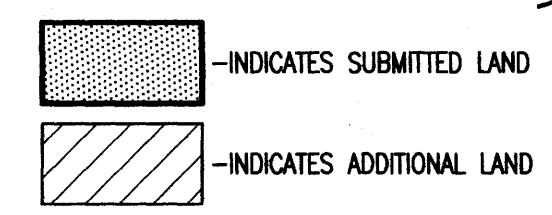
CORRECTED

THIS SHEET: OVERALL SITE LAYOUT AND AREAS

Large/Small Plat(s) Recorded herewith as # 210012737

City of Williamsburg & County of James City
Circuit Court: This PLAT was recorded on 6-23-2021
at 11:41 AM/PM, PB _____ PG _____
Document # 210012737
MONA A. FOLEY, CLERK
Mona A. Foley, Clerk

JCC Subdivision Agent Approval Not Required
-PH 20 June 2021

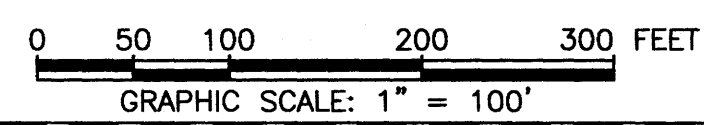


**PHASE 1
CONDOMINIUM PLAT
OF
THE PROMENADE
AT
JOHN TYLER
A CONDOMINIUM
JAMES CITY COUNTY, VIRGINIA**

Jo# 160921

Hayden Frye and Associates, Inc.
Land Surveyors
333 KELLAM ROAD, SUITE 200
VIRGINIA BEACH, VA., 23462
PH: (757) 491-7228 FX: (757) 491-7229

DATE: JUNE 7, 2021
SCALE: 1"=100'
SHEET 1 OF 2 THIS PHASE



SEE SHEET 2 FOR PROPERTY DATA, EASEMENTS, CURVE AND LINE TABLE