

210012486

5' DEDICATION CURVE TABLE

CURVE	RADIUS	ARC LENGTH	CHORD LENGTH	CHORD BEARING	DELTA ANGLE
C117	486.26'	135.54'	135.11'	S 65°41'32" W	15°58'16"
C118	367.83'	177.05'	175.35'	S 70°50'12" W	27°34'46"
C119	500.96'	188.46'	187.35'	N 87°05'01" W	21°33'17"
C120	131.90'	71.45'	70.58'	N 83°51'46" W	31°02'13"
C121	568.23'	72.22'	72.17'	N 44°43'31" W	7°16'56"
C122	733.86'	152.38'	152.11'	N 41°25'25" W	11°53'49"
C123	753.32'	221.58'	220.78'	N 40°16'05" W	16°51'11"
C124	625.13'	187.84'	187.13'	N 44°03'35" W	17°12'59"
C125	1100.18'	319.28'	318.16'	N 32°34'21" W	16°37'40"
C126	1243.06'	324.47'	323.55'	N 18°27'47" W	14°57'20"
C127	187.67'	173.33'	167.23'	N 01°57'34" E	52°54'56"
C128	246.09'	280.52'	265.57'	N 04°30'55" E	65°18'37"
C129	365.00'	316.93'	307.07'	N 40°26'54" W	49°45'02"
C130	630.54'	357.52'	352.75'	N 49°15'09" W	32°29'13"
C131	484.69'	116.72'	116.44'	N 45°00'09" W	13°47'52"
C132	263.91'	160.47'	158.01'	N 34°00'11" W	34°50'18"
C133	277.25'	132.50'	131.25'	N 04°50'01" W	27°23'00"
C134	598.60'	131.36'	131.10'	N 01°46'00" E	12°34'25"
C135	356.91'	95.38'	95.10'	N 09°50'40" W	15°18'41"
C136	219.57'	74.78'	74.42'	N 24°49'11" W	19°30'49"
C137	219.57'	30.72'	30.70'	N 38°35'05" W	8°00'59"
C138	275.26'	138.27'	136.82'	N 55°06'39" W	28°46'52"
C139	266.18'	154.55'	152.39'	N 85°17'32" W	33°15'58"
C140	125.17'	100.99'	98.27'	N 83°52'00" W	46°13'45"
C141	263.97'	193.57'	189.26'	N 87°00'08" W	42°00'51"
C142	2363.01'	424.70'	424.13'	S 70°02'12" W	10°17'52"
C143	273.52'	153.06'	151.07'	S 87°48'03" W	32°03'45"
C144	66.58'	91.68'	84.60'	N 40°02'04" W	78°53'16"
C145	1532.92'	436.93'	435.45'	N 10°02'14" W	16°19'51"
C146	149.31'	110.67'	108.15'	N 33°56'23" W	42°28'03"

5' DEDICATION LINE TABLE

LINE	BEARING	DISTANCE
L123	S 54°30'58" W	73.13'
L124	N 73°20'59" W	102.26'
L125	N 41°46'00" W	422.23'
L126	N 50°19'12" W	263.10'
L127	N 18°43'53" W	248.61'
L128	N 16°48'21" W	250.18'
L129	N 10°42'52" E	102.56'
L130	N 01°24'31" W	137.22'
L131	N 15°05'11" W	159.21'
L132	N 40°12'01" W	305.62'
L133	N 66°34'58" W	263.28'
L134	S 79°06'25" W	297.14'
L135	N 66°48'37" W	77.15'
L136	N 77°22'42" W	50.75'

5' DEDICATION LINE TABLE

LINE	BEARING	DISTANCE
L106	S 69°38'04" E	182.47'
L107	S 19°04'27" E	102.74'
L108	S 28°44'04" E	206.15'
L109	S 33°19'09" E	155.77'
L110	S 34°03'48" E	103.71'
L111	N 35°48'08" W	15.00'
L113	S 58°18'41" W	210.62'
L114	S 54°00'04" W	79.96'
L115	S 39°50'31" E	48.70'
L116	S 45°43'44" W	51.25'
L117	S 01°25'41" W	388.43'
L118	S 25°45'19" E	187.76'
L119	S 10°13'41" W	174.43'
L120	S 31°02'30" W	28.84'
L121	N 40°40'51" E	59.20'
L122	S 30°01'47" E	17.12'

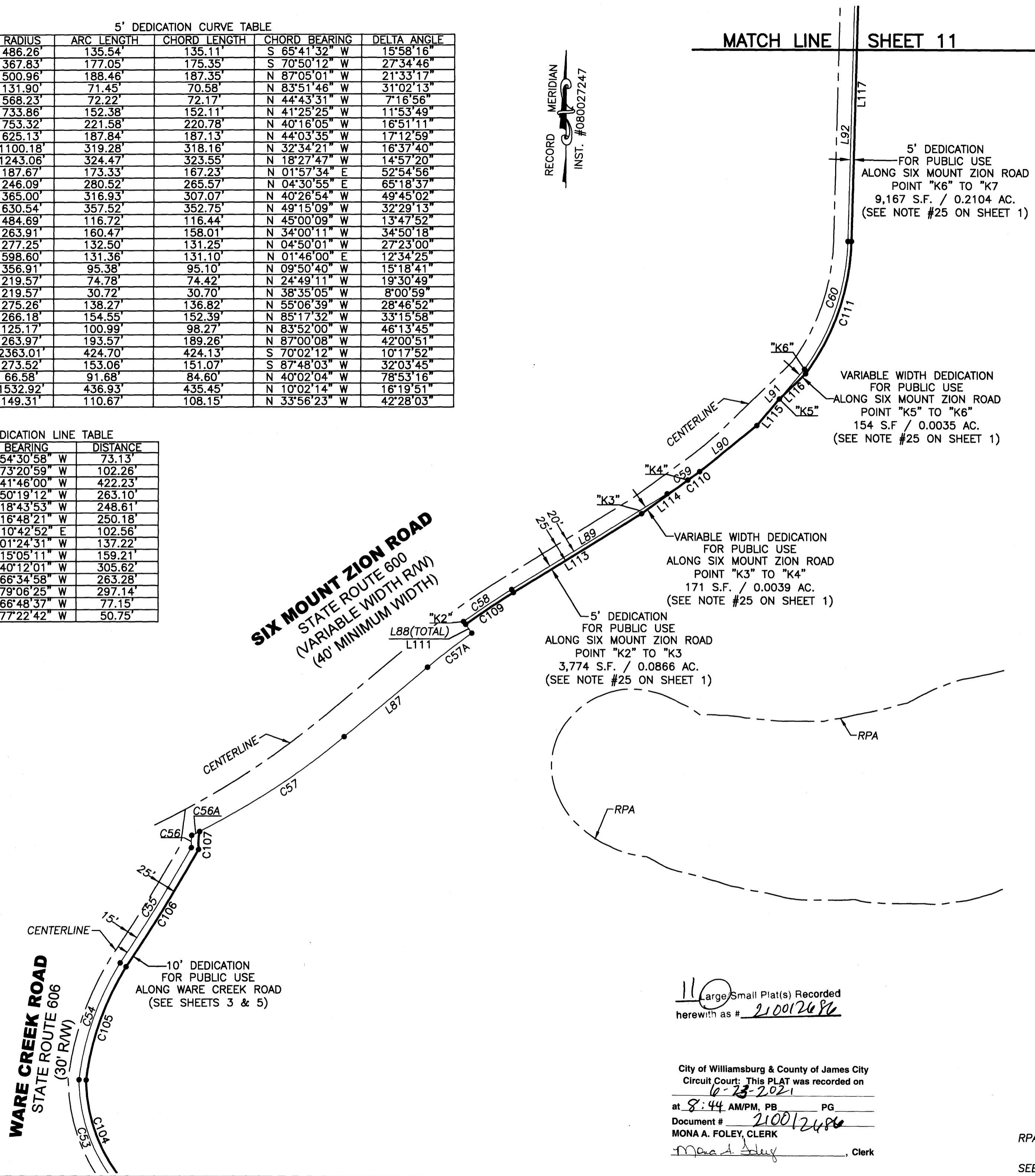
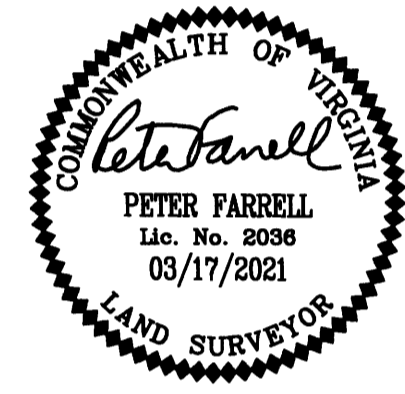
5' DEDICATION CURVE TABLE

CURVE	RADIUS	ARC LENGTH	CHORD LENGTH	CHORD BEARING
C90	149.31'	55.67'	55.35'	S 65°51'16" E
C91	869.54'	183.71'	183.37'	S 62°20'38" E
C92	356.22'	126.39'	125.73'	S 62°48'54" E
C93	235.09'	167.01'	163.52'	S 59°06'50" E
C94	460.70'	200.45'	198.87'	S 59°27'33" E
C95	454.92'	147.19'	146.55'	S 64°19'34" E
C96	529.63'	144.96'	144.51'	S 27°51'09" E
C97	605.46'	115.64'	115.46'	S 23°10'40" E
C98	2875.52'	251.04'	250.96'	S 35°35'24" E
C99	467.98'	91.31'	91.16'	S 28°16'24" E
C100	480.16'	209.89'	208.22'	S 45°41'27" E
C101	455.35'	172.40'	171.37'	S 52°01'38" E
C102	210.96'	73.10'	72.74'	S 22°23'02" E
C103	480.27'	246.86'	244.15'	S 19°59'40" E
C104	219.94'	136.11'	133.95'	S 18°19'16" E
C105	391.80'	168.99'	167.68'	S 19°23'46" W
C106	2686.96'	191.73'	191.69'	S 31°48'49" W
C107	90.00'	25.13'	25.04'	S 02°57'51" W
C109	1120.92'	80.48'	80.46'	S 56°15'17" W
C110	592.96'	20.42'	20.41'	N 53°58'54" E
C111	326.56'	199.49'	196.40'	S 18°55'43" W
C112	465.74'	220.97'	218.90'	S 12°09'49" E
C113	415.74'	261.10'	256.83'	S 07°45'49" E
C114	929.93'	391.32'	388.44'	S 22°17'00" W
C115	165.98'	12.40'	12.39'	S 35°07'56" E
C116	165.98'	253.46'	229.54'	S 16°39'54" W

SUBDIVISION OF
 PARCEL ID: #0630100005
 CREATING
**STONEHOUSE PRESERVE &
 RIVERFRONT PRESERVE**
 STONEHOUSE DISTRICT JAMES CITY COUNTY VIRGINIA
 DATE: 03/17/2021 SCALE: 1"=500' JOB # 17-378

LandTech Resources, Inc.
 Engineering & Surveying Consultants
 205 Bulfants Blvd., Suite F, Williamsburg, Virginia 23188
 Phone: (757) 565-1677 Fax: (757) 565-0782
 web: landtechresources.com

SHEET 10 OF 11
JCC-S-20-0049
 100' 0' 100' 200'
 SCALE: 1"=100'



110 Large Small Plat(s) Recorded
 herewith as # 210012486
 City of Williamsburg & County of James City
 Circuit Court: This PLAT was recorded on
 6-23-2021
 at 8:44 AM/PM, PG
 Document # 210012486
 MONA A. FOLEY, CLERK
 Clerk

RPA = APPROXIMATE LIMIT OF RESOURCE PROTECTION
 AREA (PER INST. #080027247)
 SEE SHEET 7 FOR EXISTING LINE TABLE AND SHEET 4 EXISTING FOR CURVE TABLE