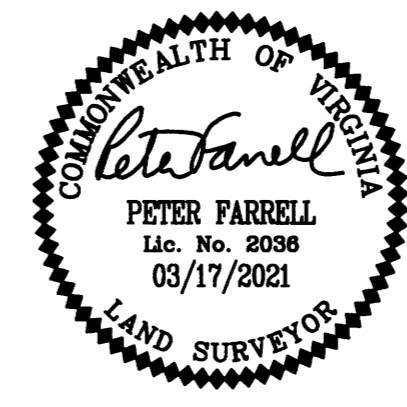


21001268p

SUBDIVISION OF
 PARCEL ID: #0630100005
 CREATING
**STONEHOUSE PRESERVE &
 RIVERFRONT PRESERVE**
 STONEHOUSE DISTRICT JAMES CITY COUNTY VIRGINIA
 DATE: 03/17/2021 SCALE: 1"=500' JOB # 17-378



RECORD MERIDIAN
 INST. #080027247

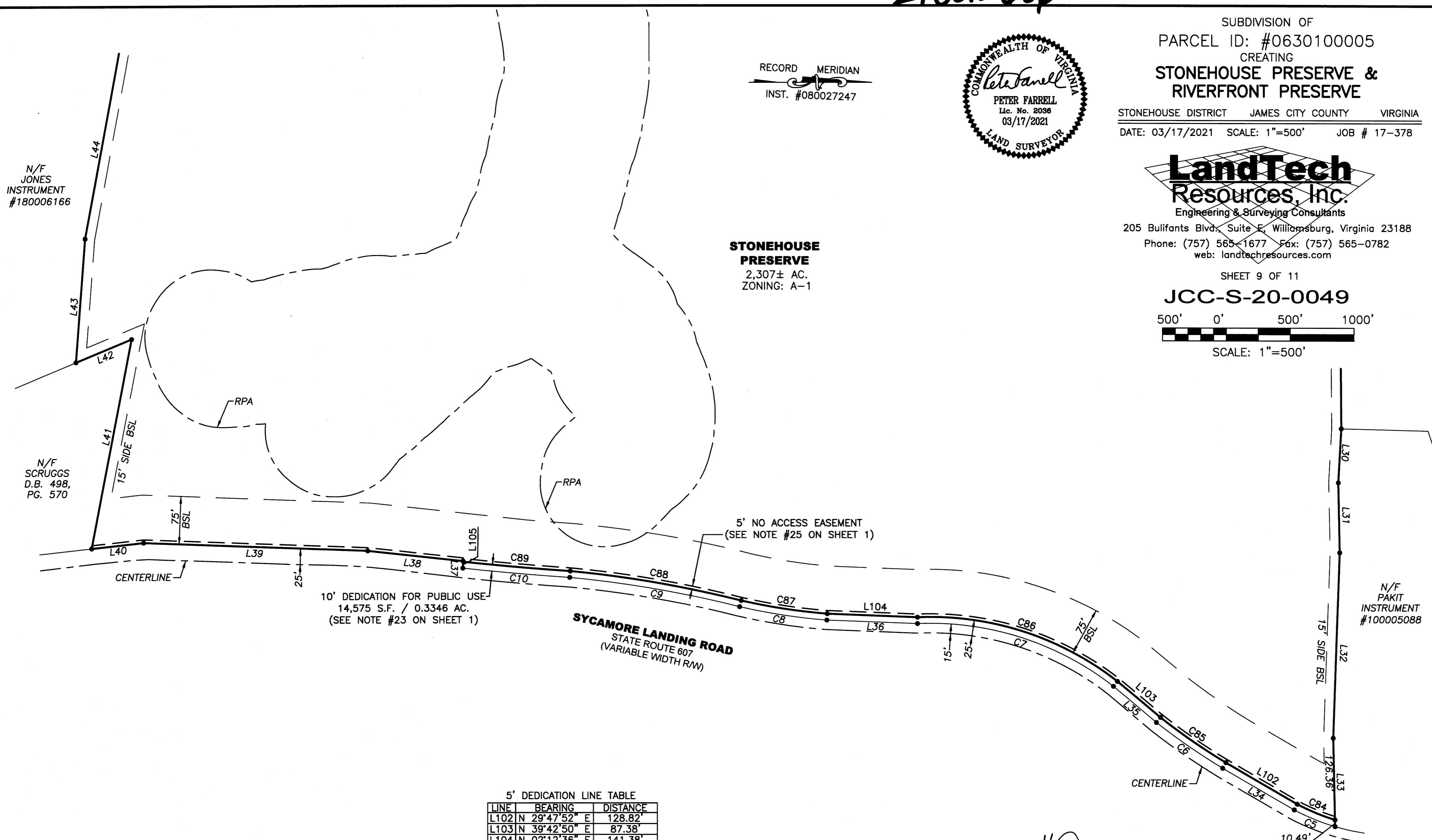
N/F JONES
 INSTRUMENT
 #180006166

N/F SCRUGGS
 D.B. 498,
 PG. 570

**STONEHOUSE
 PRESERVE**
 2,307± AC.
 ZONING: A-1

**LandTech
 Resources, Inc.**
 Engineering & Surveying Consultants
 205 Bulifants Blvd., Suite F, Williamsburg, Virginia 23188
 Phone: (757) 565-1677 Fax: (757) 565-0782
 web: landtechresources.com

SHEET 9 OF 11
JCC-S-20-0049
 500' 0' 500' 1000'
 SCALE: 1"=500'



10' DEDICATION FOR PUBLIC USE
 14,575 S.F. / 0.3346 AC.
 (SEE NOTE #23 ON SHEET 1)

5' NO ACCESS EASEMENT
 (SEE NOTE #25 ON SHEET 1)

5' DEDICATION LINE TABLE

LINE	BEARING	DISTANCE
L102	N 29°47'52" E	128.82'
L103	N 39°42'50" E	87.38'
L104	N 02°12'36" E	141.38'
L105	N 88°27'44" W	10.03'

5' DEDICATION CURVE TABLE

CURVE	RADIUS	ARC LENGTH	CHORD LENGTH	CHORD BEARING	TANGENT	DELTA ANGLE
C84	330.50'	63.70'	63.60'	N 22°07'13" E	31.95'	11°02'36"
C85	1018.05'	123.98'	123.91'	N 34°17'22" E	62.07'	6°58'40"
C86	474.29'	335.38'	328.44'	N 17°43'25" E	175.05'	40°30'55"
C87	901.10'	136.37'	136.24'	N 08°45'14" E	68.32'	8°40'16"
C88	1753.91'	271.78'	271.51'	N 09°51'58" E	136.16'	8°52'42"
C89	3908.64'	168.43'	168.41'	N 05°03'06" E	84.23'	2°28'08"

**PUBLIC USE DEDICATION &
 NO ACCESS EASEMENT
 DETAIL**
 SCALE 1"=100'

11 Large/Small Plat(s) Recorded
 herewith as # 21001268p

City of Williamsburg & County of James City
 Circuit Court: This PLAT was recorded on
 at 8:44 AM/PM, PG. 10-23-2021
 Document # 21001268p
 MONA A. FOLEY, CLERK
 Mona A. Foley, Clerk

BSL = BUILDING SETBACK LINES
 RPA = APPROXIMATE LIMIT OF RESOURCE PROTECTION
 AREA (PER INST. #080027247)
 SEE SHEET 7 FOR EXISTING LINE TABLE AND SHEET 4 EXISTING FOR CURVE TABLE