

2100 12686

SUBDIVISION OF  
 PARCEL ID: #0630100005  
 CREATING  
**STONEHOUSE PRESERVE &  
 RIVERFRONT PRESERVE**

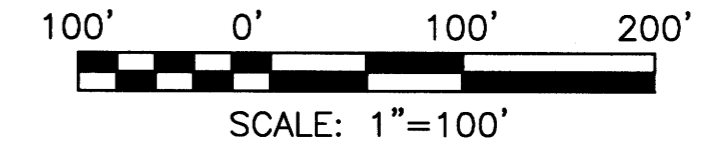
STONEHOUSE DISTRICT JAMES CITY COUNTY VIRGINIA  
 DATE: 03/17/2021 SCALE: 1"=100' JOB # 17-378



Engineering & Surveying Consultants  
 205 Bulifants Blvd., Suite F, Williamsburg, Virginia 23188  
 Phone: (757) 565-1677 Fax: (757) 565-0782  
 web: landtechresources.com

SHEET 8 OF 11

**JCC-S-20-0049**



11 Large/Small Plat(s) Recorded  
 herewith as # 210012686

City of Williamsburg & County of James City  
 Circuit Court: This PLAT was recorded on  
 0-23-2021  
 at 8:44 AM/PM, PB PG  
 Document # 210012686  
 MONA A. FOLEY, CLERK  
 Clerk

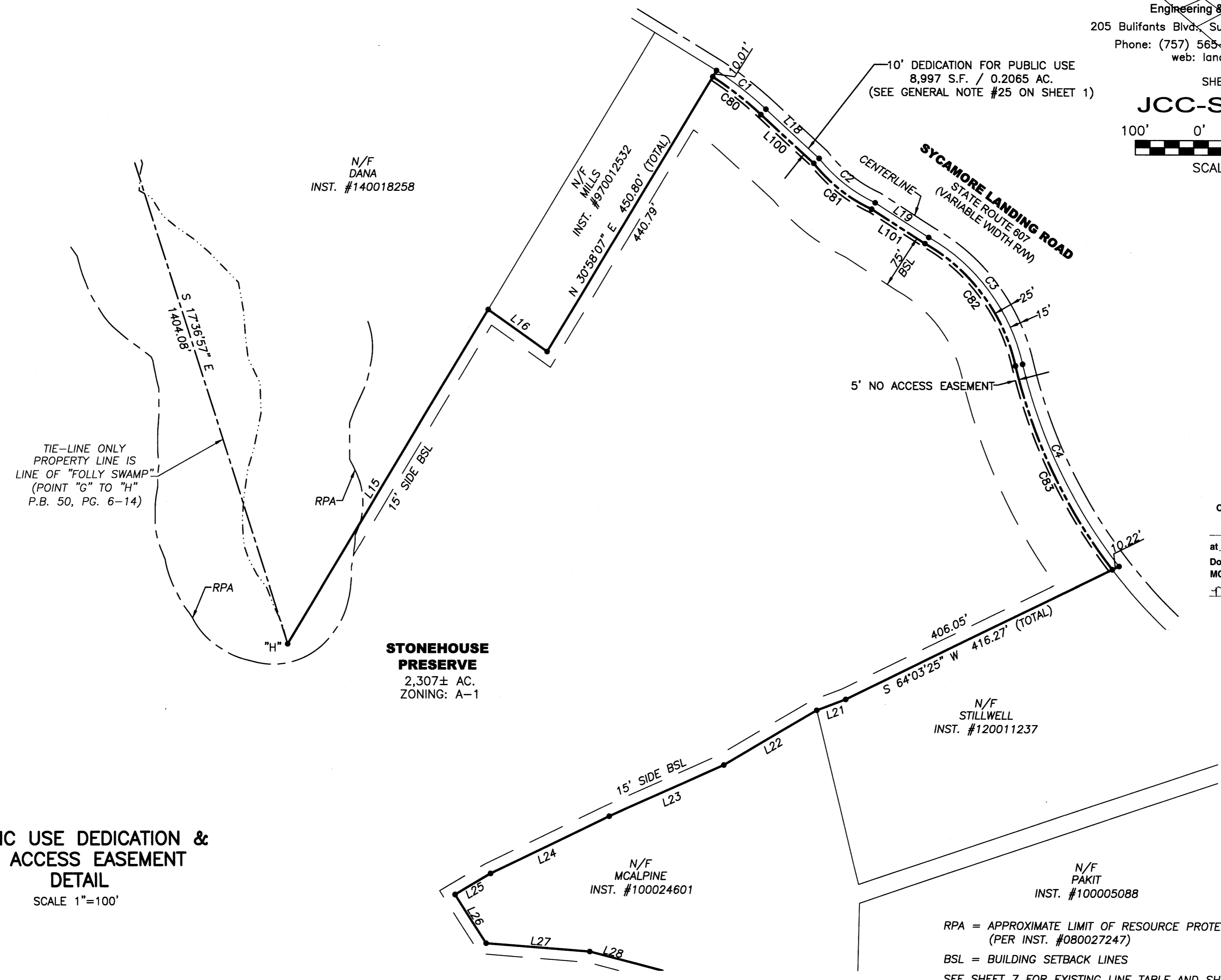
5' DEDICATION CURVE TABLE

CURVE	RADIUS	ARC LENGTH	CHORD LENGTH	CHORD BEARING	TANGENT	DELTA ANGLE
C80	496.30'	84.09'	83.99'	N 51°50'24" W	42.15'	9°42'28"
C81	213.99'	102.42'	101.45'	N 51°34'50" W	52.21'	27°25'23"
C82	257.41'	214.74'	208.57'	N 36°32'27" W	114.06'	47°47'52"
C83	722.53'	310.05'	307.68'	N 25°31'20" W	157.45'	24°35'12"

5' DEDICATION LINE TABLE

LINE	BEARING	DISTANCE
L100	N 47°19'06" W	98.50'
L101	N 57°08'01" W	86.96'

RECORD MERIDIAN  
 INST. #080027247



**PUBLIC USE DEDICATION &  
 NO ACCESS EASEMENT  
 DETAIL**  
 SCALE 1"=100'

RPA = APPROXIMATE LIMIT OF RESOURCE PROTECTION AREA  
 (PER INST. #080027247)  
 BSL = BUILDING SETBACK LINES  
 SEE SHEET 7 FOR EXISTING LINE TABLE AND SHEET 4 EXISTING FOR CURVE TABLE