

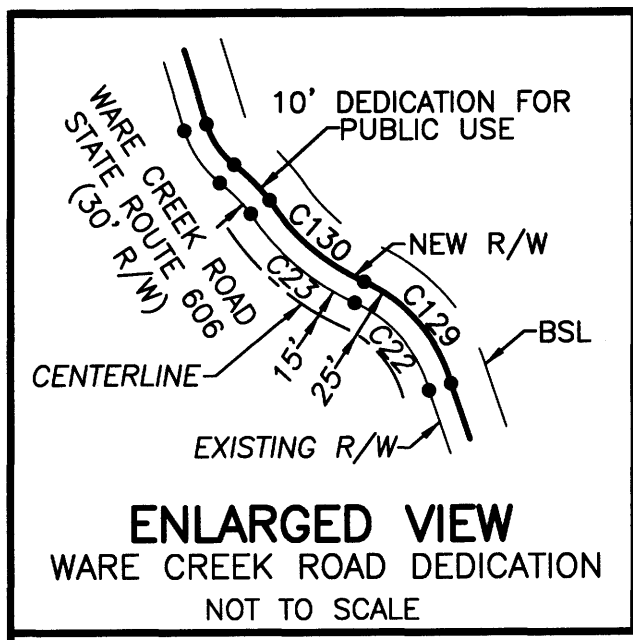
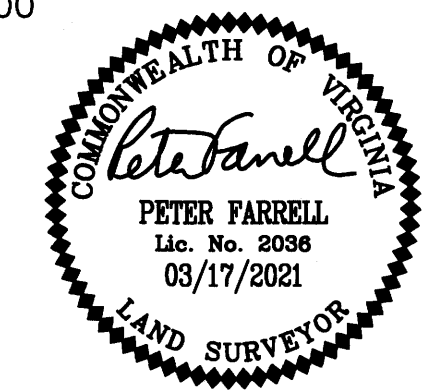
210012680

SUBDIVISION OF
PARCEL ID: #0630100005
CREATING
**STONEHOUSE PRESERVE &
RIVERFRONT PRESERVE**
STONEHOUSE DISTRICT JAMES CITY COUNTY VIRGINIA
DATE: 03/17/2021 SCALE: 1"=500' JOB # 17-378

**LandTech
Resources, Inc.**
Engineering & Surveying Consultants
205 Bulfants Blvd., Suite E, Williamsburg, Virginia 23188
Phone: (757) 565-1677 Fax: (757) 565-0782
web: landtechresources.com

SHEET 5 OF 11

JCC-S-20-0049
500' 0' 500' 1000'
SCALE: 1"=500'



YORK RIVER PRESERVE
COMMONWEALTH OF
VIRGINIA BOARD OF GAME
& INLAND FISHERIES
D.B. 652, PG. 981

MATCH LINE SHEET 7

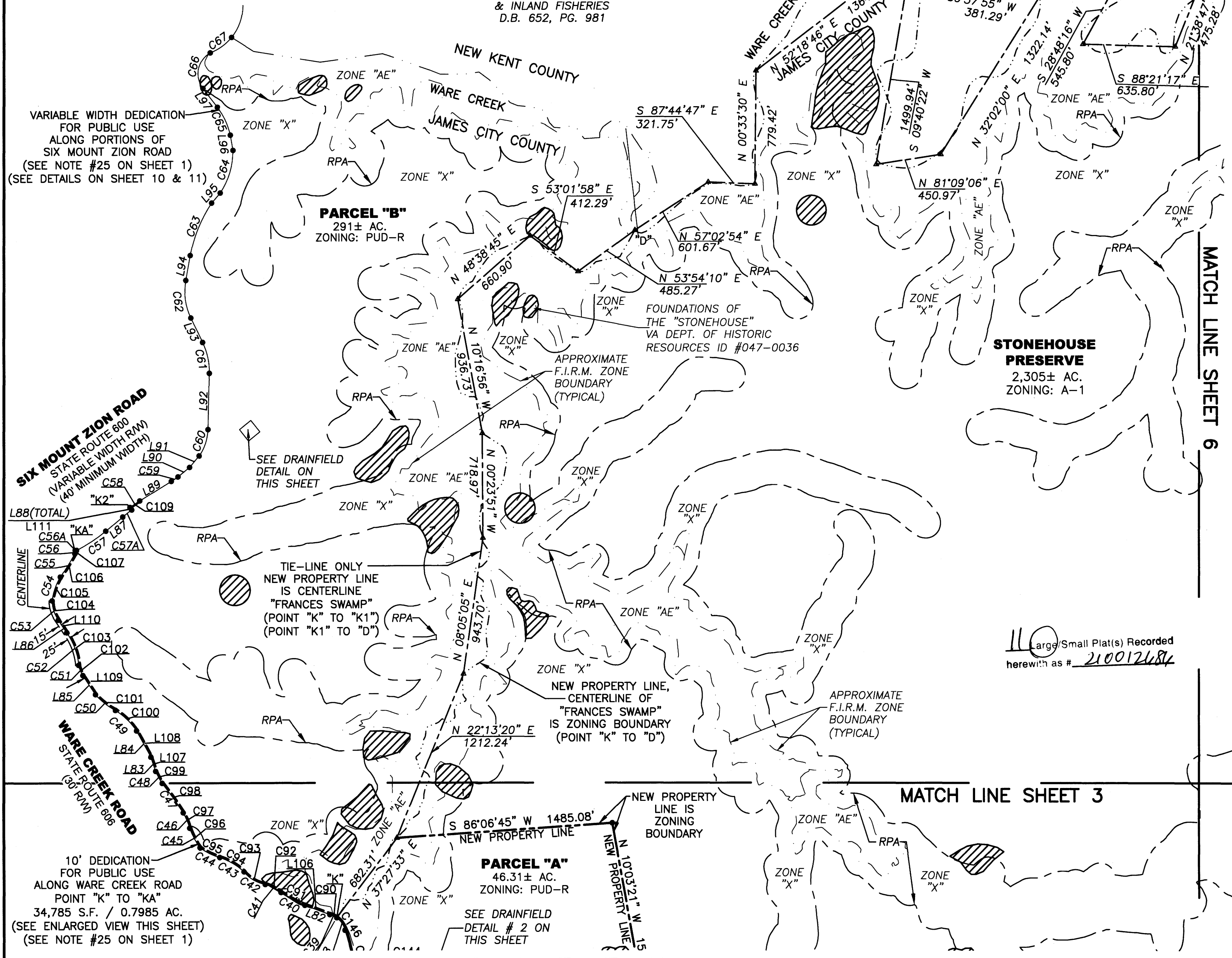
TIE-LINE ONLY
PROPERTY LINE AND
MUNICIPAL BOUNDARY
IS CENTERLINE OF
WARE CREEK
(POINT "D" TO "E")

YORK RIVER PRESERVE
COMMONWEALTH OF
VIRGINIA BOARD OF GAME
& INLAND FISHERIES
D.B. 652, PG. 981

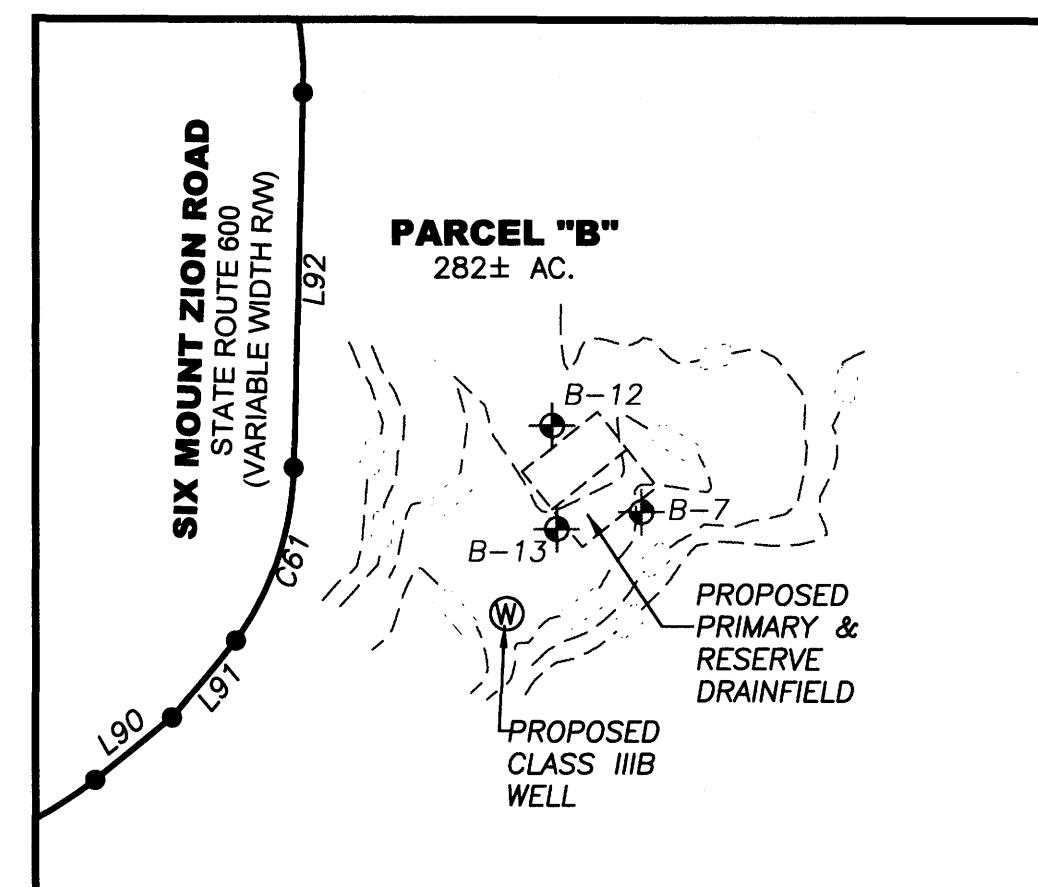
VARIABLE WIDTH DEDICATION
FOR PUBLIC USE
ALONG PORTIONS OF
SIX MOUNT ZION ROAD
(SEE NOTE #25 ON SHEET 1)
(SEE DETAILS ON SHEET 10 & 11)

SIX MOUNT ZION ROAD
STATE ROUTE 800
(VARIABLE WIDTH R/W)
(40 MINIMUM WIDTH)

10' DEDICATION
FOR PUBLIC USE
ALONG WARE CREEK ROAD
POINT "K" TO "KA"
34,785 S.F. / 0.7985 AC.
(SEE ENLARGED VIEW THIS SHEET)
(SEE NOTE #25 ON SHEET 1)



110 Large/Small Plat(s) Recorded
herewith as # 210012680



DRAINFIELD DETAIL
SCALE 1"=200'

City of Williamsburg & County of James City
Circuit Court: This PLAT was recorded on
6-23-2021
at 8:44 AM/PM, PB PG
Document # 210012680
MONA A. FOLEY, CLERK
Mona A. Foley, Clerk

ARCHAEOLOGICAL/HISTORIC RESOURCE SITE
(PER STONEHOUSE MASTER PLAN)
RPA = APPROXIMATE LIMIT OF RESOURCE PROTECTION AREA
(PER INST. #080027247)
SEE SHEET 7 FOR EXISTING LINE TABLE
SEE SHEET 4 FOR EXISTING CURVE TABLE
SEE SHEET 10 FOR DEDICATION LINE & CURVE TABLES