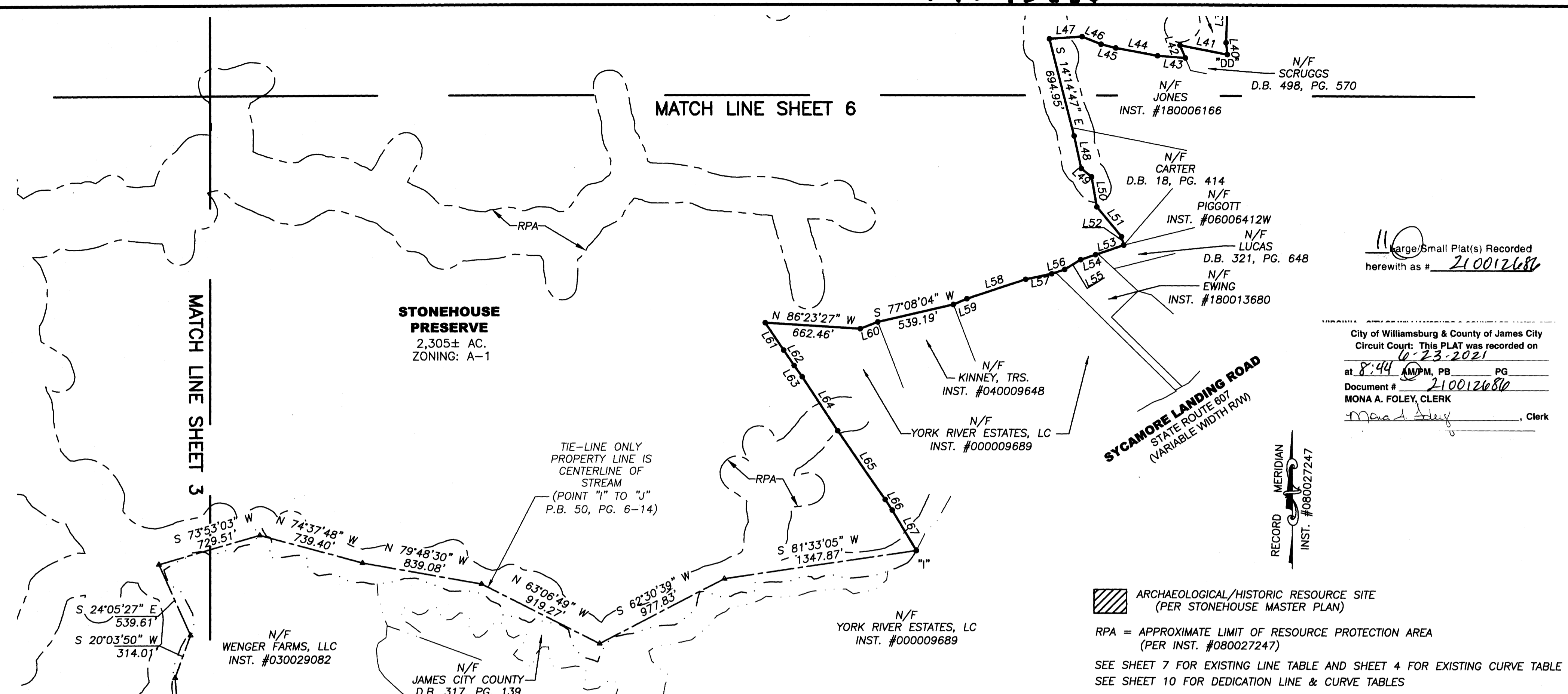


210012680

MATCH LINE SHEET 6



11 Large/Small Plat(s) Recorded herewith as # 210012680

City of Williamsburg & County of James City
Circuit Court: This PLAT was recorded on 06/23/2021 at 8:44 AM PM, PG. Document # 210012680
MONA A. FOLEY, CLERK

RECORD MERIDIAN
INST. #080027247

EXISTING CURVE TABLE

CURVE	RADIUS	ARC LENGTH	CHORD LENGTH	CHORD BEARING	DELTA ANGLE
C1	506.30'	86.16'	86.06'	N 51°51'53" W	9°45'03"
C2	203.99'	99.16'	98.18'	S 51°33'54" E	27°51'01"
C3	267.41'	222.74'	216.36'	N 36°30'55" W	47°43'28"
C4	712.53'	307.81'	305.42'	S 25°36'32" E	24°45'06"
C5	340.50'	69.02'	68.90'	N 21°52'00" E	11°36'52"
C6	1028.05'	125.46'	125.38'	N 34°17'30" E	6°59'31"
C7	464.29'	328.57'	321.76'	S 17°41'20" W	40°32'52"
C8	911.10'	138.18'	138.05'	N 08°45'04" E	8°41'24"
C9	1743.91'	270.19'	269.92'	S 09°52'13" W	8°52'38"
C10	3918.64'	167.89'	167.87'	N 05°02'48" E	2°27'17"
C11	476.26'	129.93'	129.53'	S 65°33'20" W	15°37'51"
C12	377.83'	181.87'	180.12'	N 70°48'12" E	27°34'49"
C13	510.96'	192.27'	191.14'	S 87°03'25" E	21°33'35"
C14	121.90'	71.89'	70.85'	N 85°02'12" W	33°47'17"
C14A	558.23'	70.84'	70.79'	N 44°42'48" W	7°16'16"
C15	743.86'	155.03'	154.75'	S 41°25'16" E	11°56'29"
C16	743.32'	218.61'	217.82'	N 40°14'34" W	16°51'03"
C17	635.13'	190.02'	189.31'	S 44°03'56" E	17°08'31"
C18	1110.18'	322.88'	321.74'	S 32°31'49" E	16°39'49"
C19	1233.06'	323.14'	322.22'	N 18°26'21" W	15°00'54"
C20	197.67'	183.47'	176.96'	S 02°03'16" W	53°10'47"
C21	236.09'	270.68'	256.10'	N 04°30'26" E	65°41'22"
C22	355.00'	308.51'	298.89'	N 40°25'30" W	49°47'32"
C23	640.54'	362.72'	357.90'	S 49°16'19" E	32°26'43"
C24	474.69'	113.91'	113.64'	N 45°01'54" W	13°44'59"
C25	273.91'	166.57'	164.01'	S 34°00'34" E	34°50'35"
C26	287.25'	137.30'	135.99'	S 04°48'08" E	27°23'09"
C27	588.60'	129.21'	128.95'	N 01°44'32" E	12°34'39"
C28	346.91'	92.85'	92.57'	N 09°52'02" W	15°20'05"
C29	209.58'	100.91'	99.93'	N 28°51'20" W	27°35'11"
C29A	209.58'	46.04'	45.95'	N 21°21'21" W	12°35'13"
C29B	209.58'	54.87'	54.71'	N 35°08'57" W	14°59'58"
C30	265.26'	133.46'	132.05'	N 55°08'35" W	28°49'33"
C31	256.18'	148.65'	146.57'	N 85°19'21" W	33°14'45"
C32	135.17'	107.98'	105.13'	S 83°51'58" E	45°46'15"
C33	253.97'	186.58'	182.41'	N 87°01'32" W	42°05'33"

EXISTING CURVE TABLE

CURVE	RADIUS	ARC LENGTH	CHORD LENGTH	CHORD BEARING	DELTA ANGLE
C34	2353.01'	423.78'	423.21'	S 70°01'58" W	10°19'09"
C35	283.52'	159.16'	157.08'	N 87°43'43" E	32°09'49"
C36	76.58'	105.14'	97.07'	S 40°00'24" E	78°39'33"
C37	1522.92'	434.46'	432.98'	N 10°02'54" W	16°20'43"
C38	139.31'	103.81'	101.42'	N 33°51'32" W	42°41'41"
C39	139.31'	52.45'	52.14'	N 65°59'34" W	21°34'24"
C40	879.54'	186.25'	185.90'	S 62°20'13" E	12°07'59"
C41	346.22'	122.60'	121.96'	N 62°44'34" W	20°17'19"
C42	245.09'	172.81'	169.25'	S 59°07'55" E	40°23'50"
C43	450.70'	195.24'	193.72'	N 59°29'42" W	24°49'14"
C44	464.92'	151.99'	151.31'	S 64°12'43" E	18°43'49"
C45	539.63'	149.61'	149.13'	S 27°55'56" E	15°53'05"
C46	595.46'	113.54'	113.37'	N 23°08'58" W	10°55'30"
C47	2865.52'	250.14'	250.07'	N 35°35'52" W	5°00'06"
C48	477.98'	93.95'	93.80'	S 28°16'36" E	11°15'42"
C49	470.16'	204.73'	203.11'	N 45°41'23" W	24°56'56"
C50	465.35'	176.46'	175.41'	S 51°57'34" E	21°43'36"
C51	220.96'	77.30'	76.90'	S 22°18'45" E	20°02'37"
C52	470.27'	242.39'	239.72'	N 19°57'37" W	29°31'55"
C53	229.94'	142.80'	140.51'	S 18°12'57" E	35°34'57"
C54	401.80'	174.15'	172.79'	S 19°21'43" W	24°50'00"
C55	2676.96'	188.16'	188.12'	N 31°50'54" E	4°01'38"
C56	100.00'	37.97'	37.74'	S 07°41'02" W	21°45'17"
C57	1165.92'	207.56'	207.29'	N 55°13'41" E	10°12'00"
C58	1125.92'	160.81'	160.67'	S 54°13'11" W	8°11'00"
C59	592.96'	55.02'	55.00'	N 55°39'12" E	5°18'58"
C60	321.56'	192.41'	189.55'	N 18°34'12" E	34°17'01"
C61	460.74'	218.59'	216.55'	N 12°09'49" W	27°11'00"
C62	420.74'	264.24'	259.92'	S 07°45'49" E	35°59'00"
C63	934.93'	392.17'	389.30'	S 22°14'41" W	24°02'00"
C64	507.46'	312.05'	307.15'	N 16°38'43" E	35°13'56"
C65	502.46'	213.11'	211.52'	N 25°07'17" W	24°18'04"
C66	165.98'	282.98'	249.93'	S 11°34'11" W	97°41'00"
C67	346.54'	183.49'	181.35'	N 54°20'18" E	30°20'16"

SUBDIVISION OF
PARCEL ID: #0630100005
CREATING
STONEHOUSE PRESERVE & RIVERFRONT PRESERVE
STONEHOUSE DISTRICT JAMES CITY COUNTY VIRGINIA
DATE: 03/17/2021 SCALE: 1"=500' JOB # 17-378



SHEET 4 OF 11

