

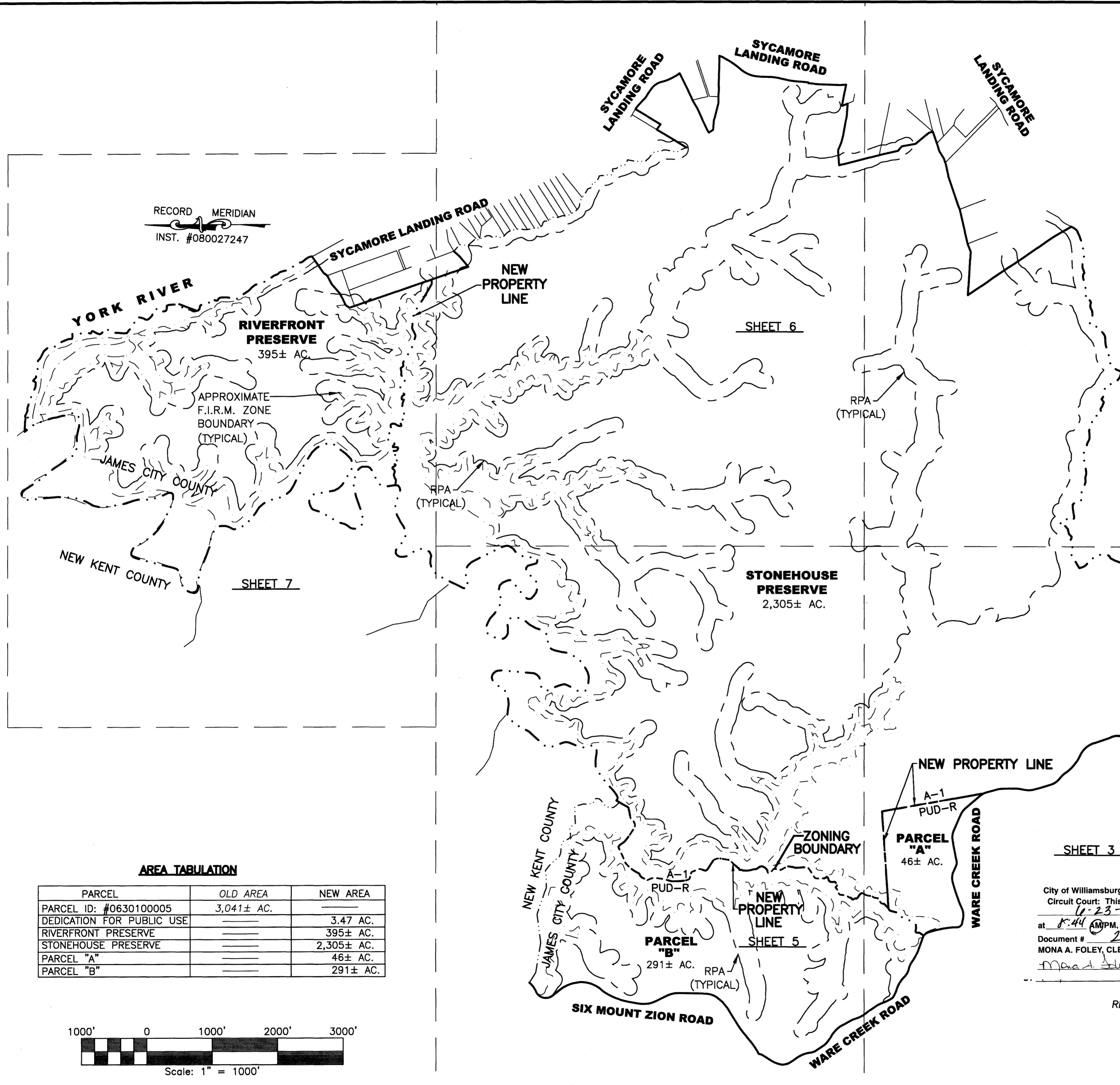
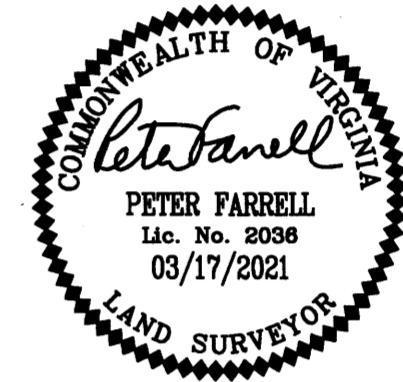
21002686

SUBDIVISION OF
 PARCEL ID: #0630100005
 CREATING
**STONEHOUSE PRESERVE &
 RIVERFRONT PRESERVE**
 STONEHOUSE DISTRICT JAMES CITY COUNTY VIRGINIA
 DATE: 03/17/2021 SCALE: 1"=1000' JOB # 17-378

**LandTech
 Resources, Inc.**
 Engineering & Surveying Consultants
 205 Bulifants Blvd., Suite E, Williamsburg, Virginia 23188
 Phone: (757) 565-1677 Fax: (757) 565-0782
 web: landtechresources.com

SHEET 2 OF 11

JCC-S-20-0049



RECORD MERIDIAN
 INST. #080027247

YORK RIVER

RIVERFRONT PRESERVE
 395± AC.

APPROXIMATE
 F.I.R.M. ZONE
 BOUNDARY
 (TYPICAL)

JAMES CITY COUNTY

NEW KENT COUNTY

SHEET 7

SHEET 6

STONEHOUSE PRESERVE
 2,305± AC.

SHEET 4

WARE CREEK ROAD

MOUNT LAUREL ROAD

NEW PROPERTY LINE

A-1
 PUD-R

PARCEL
 "A"
 46± AC.

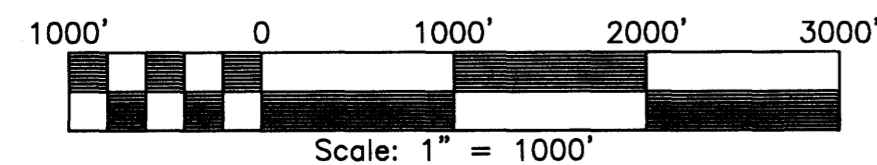
Large Small Plat(s) Recorded
 herewith as # 21002686

SHEET 3

City of Williamsburg & County of James City
 Circuit Court: This PLAT was recorded on
 6-23-2021
 at 8:44 AM PM, PG _____
 Document # 21002686
 MONA A. FOLEY, CLERK
 Clerk

AREA TABULATION

PARCEL	OLD AREA	NEW AREA
PARCEL ID: #0630100005	3,041± AC.	
DEDICATION FOR PUBLIC USE		3.47 AC.
RIVERFRONT PRESERVE		395± AC.
STONEHOUSE PRESERVE		2,305± AC.
PARCEL "A"		46± AC.
PARCEL "B"		291± AC.



RPA = APPROXIMATE LIMIT OF RESOURCE PROTECTION AREA
 (PER INST. #080027247)

**OVERALL BOUNDARY
 & SHEET INDEX**
 SEE SHEETS 3 THROUGH 8 FOR DETAIL