

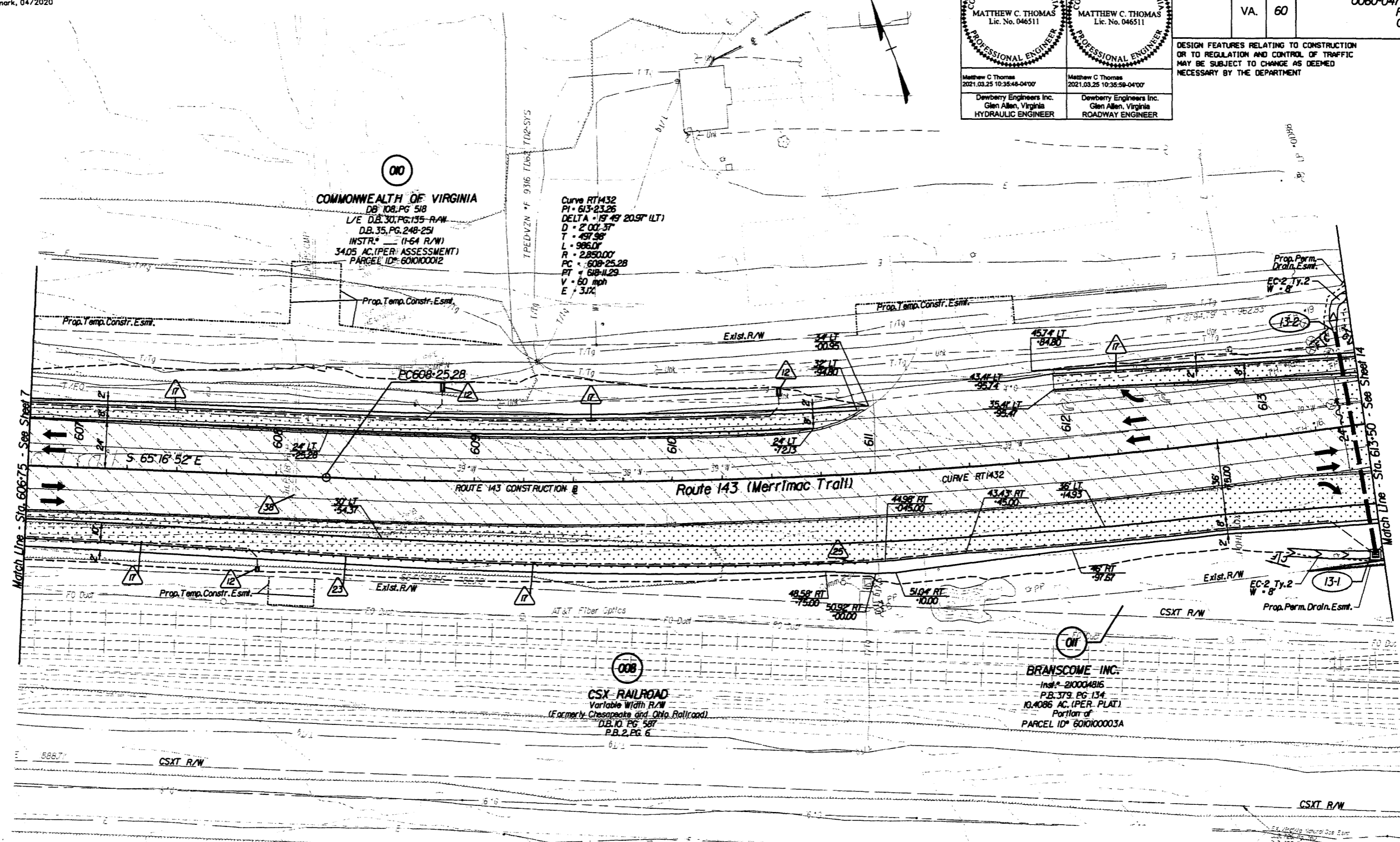
PROJECT MANAGER Mr. Wolf Zeman, PE - VDOT Hampton Roads District - (757) 956-3272
 SURVEYED BY, DATE Dewberry Engineers Inc., 03/2020
 DESIGNED BY, Dewberry Engineers Inc. - (804) 205-3340
 SUBSURFACE UTILITY BY, Accumark, 04/2020

Matthew C Thomas 2021.03.25 10:38:48-0400 Dewberry Engineers Inc. Glen Allen, Virginia HYDRAULIC ENGINEER	Matthew C Thomas 2021.03.25 10:38:59-0400 Dewberry Engineers Inc. Glen Allen, Virginia ROADWAY ENGINEER

REVISED	STATE	ROUTE	STATE	PROJECT	SHEET NO.
03/24/21	VA.	60		0060-047-627 R-201 C-501	13

DESIGN FEATURES RELATING TO CONSTRUCTION OR TO REGULATION AND CONTROL OF TRAFFIC MAY BE SUBJECT TO CHANGE AS DEEMED NECESSARY BY THE DEPARTMENT

Dewberry



- Key Legend**
- | | | | |
|--|---|---|--|
| 1 6\" Curb, Sfd, CG-2 Req'd. | 12 Underdrain Endwall, Sfd, EW-12 Req'd. | 23 Guardrail, Sfd, GR-MGS1 Req'd. | 34 Remove Exst. Guardrail |
| 2 4\" Curb, Sfd, CG-3 Req'd. | 13 Abandon Pipe, Sfd, PP-1 Req'd. | 24 Guardrail, Sfd, GR-MGS1A Req'd. | 35 Remove Exst. Fence |
| 3 6\" Curb and Gutter, Sfd, CG-6 Req'd. | 14 Groundwater Underdrain, Sfd, UD-1 Req'd. | 25 Guardrail Terminal, Sfd, GR-MGS2 Req'd. | 36 Remove Exst. Structure |
| 4 4\" Curb and Gutter, Sfd, CG-7 Req'd. | 15 Median Underdrain, Sfd, UD-2 Req'd. | 26 Guardrail, Sfd, GR-0, 3\" Height, Type I Req'd. | 37 Remove Exst. Pipe |
| 5 Conc. Raised Median, Sfd, MS-1 Req'd. | 16 Sidewalk Underdrain, Sfd, UD-3 Req'd. | 27 Guardrail, Sfd, GR-10, 3\" Height, Type II Req'd. | 38 Abandon and Plug Exst. Pipe |
| 6 Conc. Raised Median, Sfd, MS-1A Req'd. | 17 Pavement Underdrain, Sfd, UD-4 Req'd. | 28 Guardrail, Sfd, GR-10, 3\" Height, Type III Req'd. | 39 Adj. Just Exst. Structure |
| 7 Grass Raised Median, Sfd, MS-2 Req'd. | 18 Crossdrain, Sfd, CD-1 Req'd. | 29 Trailing End Terminal, Sfd, GR-MGS3 Req'd. | 40 Clean Out Exst. Structure |
| 8 Entrance Gutter, Sfd, CG-9 Req'd. | 19 Crossdrain, Sfd, CD-2 Req'd. | 30 Fixed Object Mt., Sfd, GR-FOA-5 Req'd. | 41 Clean Out Exst. Pipe |
| 9 Entrance Gutter, Sfd, CG-9D Req'd. | 20 Handrail, Sfd, HR-1 Type II Req'd. | 31 Fixed Object Mt., Sfd, GR-FOA-2 Req'd. | 42 Full Depth Sawcut |
| 10 Entrance, Sfd, CG-11 Req'd. | 21 Barbed Wire Fence, Sfd, FE-B Req'd. | 32 Guardrail, Sfd, GR-MGS4 Req'd. | 43 6\" Curb and Dry Gutter, Mod, CG-6 Req'd. |
| 11 Curb Ramp, Sfd, CG-12 Req'd. | 22 Chain Link Fence, Sfd, FE-CL Req'd. | 33 Bridge Pier Protection, Sfd, BPPS-1 Req'd. | 44 Conc. Median Barrier, Sfd, MB-TF Req'd. |

- | | | | |
|--|-----------------------------|--|--|
| | Denotes Full Depth Pavement | | Denotes Guardrail Bumpout Pavement Section |
| | Denotes Pavement Demolition | | Denotes Mill & Variable Depth Overlay |
| | Denotes Milling and Overlay | | Denotes Construction Limits in Cuts |
| | | | Denotes Construction Limits in Fills |

REFERENCES
(PROFILES, DETAIL & DRAINAGE DESCRIPTION SHEETS, ETC.)

- | | |
|------------------------|-----------|
| Alignment Data | 1G |
| ESC Phase 1 | 2D series |
| ESC Phase 2 | 2E series |
| ESC Phase 3 | 2F series |
| Merrimac Trail Profile | 13A |
| Right-of-Way Plan | 13RW |
| Drainage Descriptions | 16 |
| Storm Sewer Profiles | 17 |

SCALE	PROJECT	SHEET NO.
0 25' 50'	0060-047-627	13