

210009237

PROPERTY LINE & R/W CURVE TABLE

CURVE	RADIUS	ARC LENGTH	CHORD LENGTH	CHORD BEARING	DELTA ANGLE
C1	585.37'	109.52'	109.36'	S 31°23'04" E	10°43'11"
C2	585.37'	95.01'	94.91'	S 21°22'30" E	9°17'58"
C3	585.37'	98.17'	98.06'	S 11°55'14" E	9°36'33"
C4	436.33'	40.70'	40.69'	N 02°28'44" W	5°20'40"
C5	436.33'	39.42'	39.41'	N 07°44'21" W	5°10'35"
C6	500.20'	29.26'	29.26'	N 12°10'27" W	3°21'07"
C7	500.20'	67.11'	67.06'	N 17°41'37" W	7°41'14"
C8	500.20'	66.82'	66.77'	N 25°21'50" W	7°39'12"
C9	500.20'	31.56'	31.56'	N 30°59'54" W	3°36'55"
C10	825.00'	78.23'	78.20'	N 30°41'44" W	5°25'59"
C11	825.00'	89.06'	89.02'	N 24°53'11" W	6°11'08"
C12	825.00'	89.07'	89.02'	N 18°42'03" W	6°11'08"
C13	825.00'	89.07'	89.02'	N 12°30'55" W	6°11'08"
C14	825.00'	81.18'	81.15'	N 06°36'13" W	5°38'16"
C15	427.10'	64.07'	64.01'	S 30°25'08" E	8°35'43"
C16	427.10'	70.28'	70.20'	S 21°24'26" E	9°25'42"
C17	427.10'	69.62'	69.54'	S 12°01'23" E	9°20'23"
C18	427.10'	30.07'	30.06'	S 05°20'12" E	4°02'00"
C19	427.10'	21.88'	21.88'	S 01°51'08" E	2°56'07"
C20	625.00'	53.06'	53.05'	N 02°41'09" W	4°51'52"
C21	625.00'	85.18'	85.11'	N 09°01'19" W	7°48'30"
C22	625.00'	88.25'	88.18'	N 16°58'16" W	8°05'24"
C23	625.00'	87.97'	87.89'	N 25°02'54" W	8°03'51"
C24	625.00'	47.25'	47.24'	N 31°14'47" W	4°19'54"
C25	32.50'	41.90'	39.06'	N 70°20'52" W	73°52'17"
C26	57.50'	53.25'	51.37'	S 80°45'06" E	53°03'48"
C27	57.50'	60.29'	57.56'	S 24°10'58" E	60°04'28"
C28	57.50'	36.27'	35.67'	S 23°55'27" W	36°08'23"
C29	57.50'	39.13'	38.38'	S 61°29'20" W	38°59'22"
C30	57.50'	44.51'	43.41'	N 76°50'27" W	44°21'05"
C31	57.50'	20.84'	20.73'	N 44°16'53" W	20°46'03"
C32	675.00'	64.14'	64.11'	N 30°41'24" W	5°26'39"
C33	675.00'	72.83'	72.79'	N 24°52'38" W	6°10'55"
C34	675.00'	72.83'	72.79'	N 18°41'43" W	6°10'55"
C35	675.00'	72.83'	72.79'	N 12°30'48" W	6°10'55"
C36	675.00'	72.83'	72.79'	N 06°19'54" W	6°10'55"
C37	675.00'	35.13'	35.13'	N 01°44'59" W	2°58'56"
C38	377.10'	46.64'	46.61'	S 03°56'12" E	7°05'14"
C39	377.10'	28.91'	28.90'	S 09°40'35" E	4°23'32"
C40	377.10'	136.36'	135.62'	S 22°13'53" E	20°43'05"

PROPERTY LINE & R/W LINE TABLE

LINE	BEARING	DISTANCE
L1	S 01°41'50" E	36.14'
L2	N 33°24'51" W	37.63'
L3	N 33°24'51" W	19.63'
L4	S 65°20'16" E	65.36'
L5	S 65°20'16" E	36.64'
L6	N 32°45'49" W	43.83'
L7	S 09°13'54" E	62.36'
L8	N 79°41'19" E	56.73'
L9	S 06°55'59" E	7.90'
L10	S 06°55'59" E	70.32'
L11	S 06°55'58" E	34.71'
L12	N 39°43'46" E	52.17'
L13	N 33°24'44" W	37.63'
L14	N 33°24'44" W	75.00'
L15	N 33°24'44" W	9.00'
L16	N 33°24'44" W	49.66'
L17	N 33°24'44" W	75.00'
L18	N 33°24'44" W	75.00'
L19	N 33°24'44" W	8.92'

EASEMENT CURVE TABLE

CURVE	RADIUS	ARC LENGTH	CHORD LENGTH	CHORD BEARING	DELTA ANGLE
C43	377.10'	44.40'	44.38'	S 29°13'03" E	6°44'46"
C44	427.10'	10.16'	10.16'	S 08°02'05" E	1°21'46"
C45	427.10'	18.25'	18.25'	S 04°32'37" E	2°26'52"
C46	377.10'	16.26'	16.26'	S 08°42'56" E	2°28'14"
C47	625.00'	17.75'	17.75'	N 12°06'46" W	1°37'37"
C48	445.00'	20.01'	20.00'	N 38°16'05" E	2°34'33"
C49	2150.00'	59.32'	59.31'	N 40°13'51" E	1°34'51"
C50	2175.00'	59.45'	59.44'	N 40°13'25" E	1°33'58"
C51	470.00'	66.15'	66.09'	N 35°31'27" E	8°03'49"
C52	445.00'	42.62'	42.61'	N 34°14'10" E	5°29'16"
C53	825.00'	73.09'	73.06'	N 30°52'27" W	5°04'33"

EASEMENT LINE TABLE

LINE	BEARING	DISTANCE
L21	N 46°35'19" E	5.65'
L22	N 16°07'15" W	199.61'
L23	N 44°00'06" W	82.29'
L24	S 75°41'24" W	46.95'
L25	S 51°14'47" W	255.54'
L26	S 64°27'50" W	62.46'
L27	S 84°15'35" W	148.44'
L28	S 84°15'30" W	192.31'
L29	N 31°19'19" W	120.39'
L30	N 61°34'12" W	110.13'
L31	N 38°47'21" W	81.92'
L32	S 78°55'37" W	21.86'
L33	N 85°06'49" W	78.84'
L34	N 28°52'17" W	39.77'
L35	S 85°06'50" E	82.42'
L36	N 62°22'23" E	36.80'
L37	S 36°56'46" W	38.47'
L38	N 16°57'20" E	45.13'
L39	N 32°42'08" W	181.10'
L40	N 13°48'35" W	57.66'
L41	N 41°29'25" E	114.99'
L42	N 46°58'15" E	137.10'
L43	N 89°16'12" E	82.01'
L44	S 79°27'18" E	86.14'
L45	S 08°14'41" W	27.77'
L46	N 85°23'43" E	205.24'
L47	N 85°23'43" E	216.48'
L48	N 39°02'42" E	150.53'

EASEMENT LINE TABLE

LINE	BEARING	DISTANCE
L49	N 39°02'42" E	143.17'
L50	S 50°33'34" E	150.50'
L51	S 50°33'34" E	155.14'
L52	S 39°26'26" W	293.94'
L53	S 50°15'42" E	25.01'
L54	S 39°26'26" W	293.94'
L55	S 58°30'28" E	25.00'
L56	N 63°10'14" E	7.20'
L57	N 63°10'14" E	7.80'
L58	S 24°52'57" E	95.65'
L59	N 24°52'57" W	92.71'
L60	S 39°52'01" E	128.02'
L61	N 39°41'45" W	127.49'
L62	S 71°08'24" W	59.09'
L63	S 28°51'39" W	39.11'
L64	N 13°46'55" W	25.18'
L65	S 26°04'09" E	70.01'
L66	S 64°53'09" W	41.57'
L67	N 24°29'23" W	120.49'
L68	N 14°12'25" W	63.14'
L69	N 57°12'00" W	27.63'
L70	S 14°01'59" W	6.86'
L71	S 23°54'11" W	61.00'
L72	S 57°05'34" E	151.89'
L73	N 39°26'26" E	80.71'
L74	S 80°30'28" E	73.11'
L75	S 00°21'03" E	168.43'

R/W CENTERLINE CURVE TABLE

CURVE	RADIUS	ARC LENGTH	CHORD LENGTH	CHORD BEARING	DELTA ANGLE
C41	402.10'	233.96'	230.68'	S 17°03'13" E	33°20'16"
C42	650.00'	376.12'	370.89'	N 16°50'07" W	33°09'13"

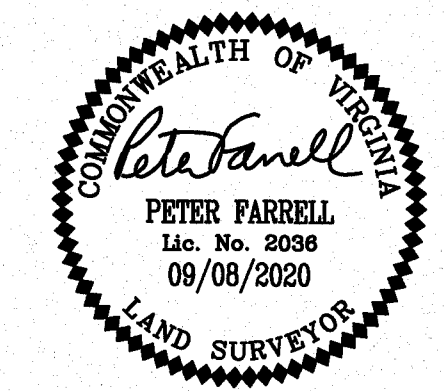
R/W CENTERLINE LINE TABLE

LINE	BEARING	DISTANCE
L20	N 56°35'16" E	32.50'

SUBDIVISION OF
STONEHOUSE TRACT 3
PARCEL "C"
CREATING
PARCEL "C" SECTION 2
LOT 30 THROUGH LOT 53
STONEHOUSE DISTRICT JAMES CITY COUNTY VIRGINIA
DATE: 09/08/2020 JOB # 17-378

LandTech Resources, Inc.
Engineering & Surveying Consultants
205 Bulfants Blvd., Suite E, Williamsburg, Virginia 23188
Phone: (757) 565-1677 Fax: (757) 565-0782
web: landtechresources.com

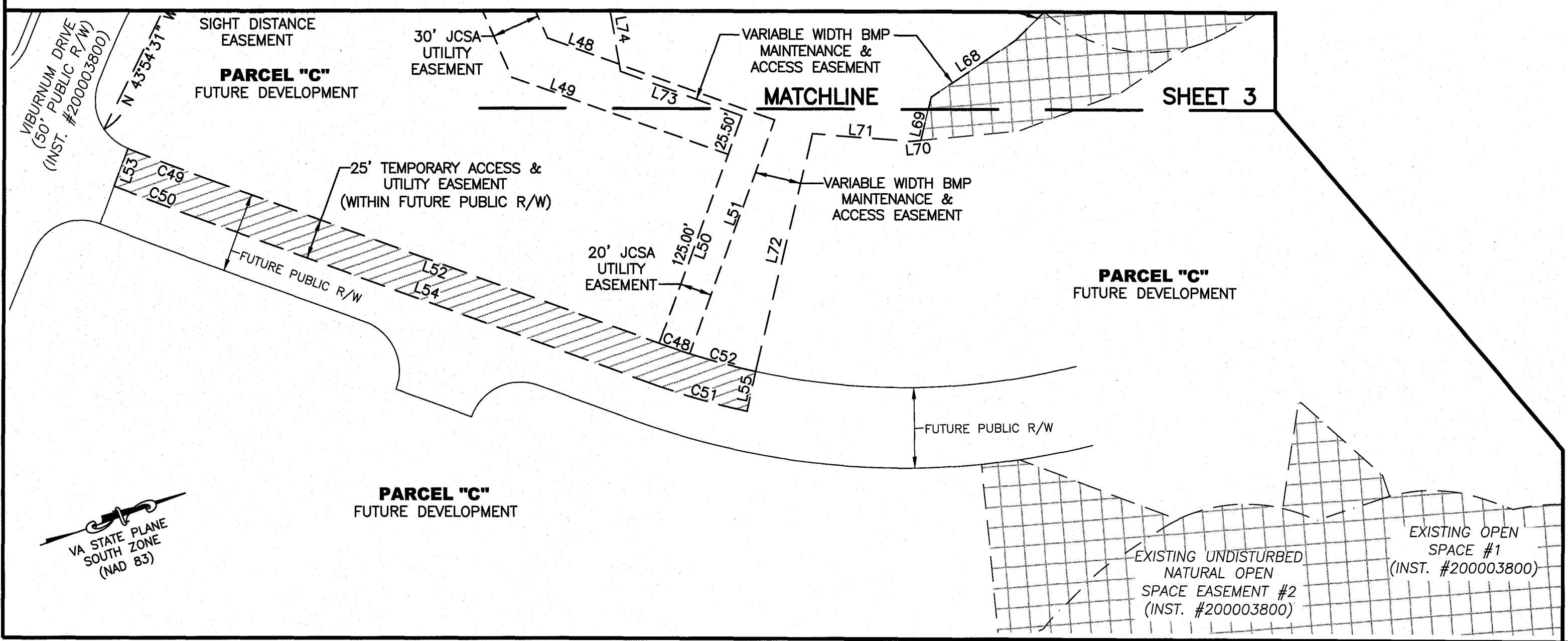
SHEET 4 OF 4
JCC-S-20-0041



EXISTING UNDISTURBED NATURAL OPEN SPACE EASEMENT

25' TEMPORARY ACCESS & UTILITY EASEMENT (WITHIN FUTURE PUBLIC R/W)

NOTE: TEMPORARY ACCESS & UTILITY EASEMENT WILL BE VACATED UPON EXTENSION OF PUBLIC R/W



4 Large/Small Plat(s) Recorded
herewith as # 210009237

City of Williamsburg & County of James City
Circuit Court: This PLAT was recorded on
May 5, 2021
at 3:37 AM/PM PB PG
Document # 210009237
MONA A. FOLEY, CLERK
Mona A. Foley, Clerk

NOTE:
THIS PLAT CREATES 2.248 ACRES OF OPEN SPACE #1.
ADDITIONAL AREAS OF OPEN SPACE #1 FALL WITHIN AREA OF
PARCEL "C" FUTURE DEVELOPMENT.

