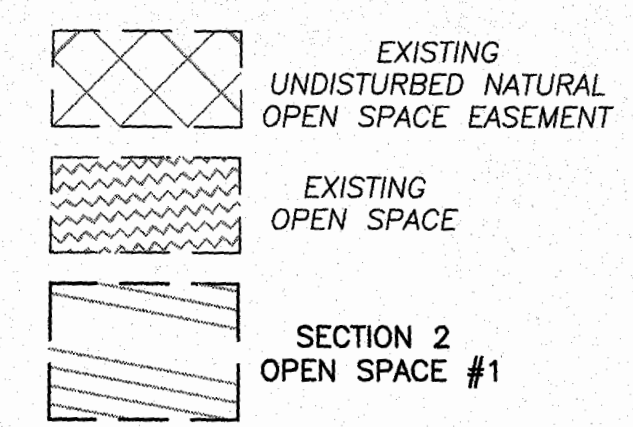
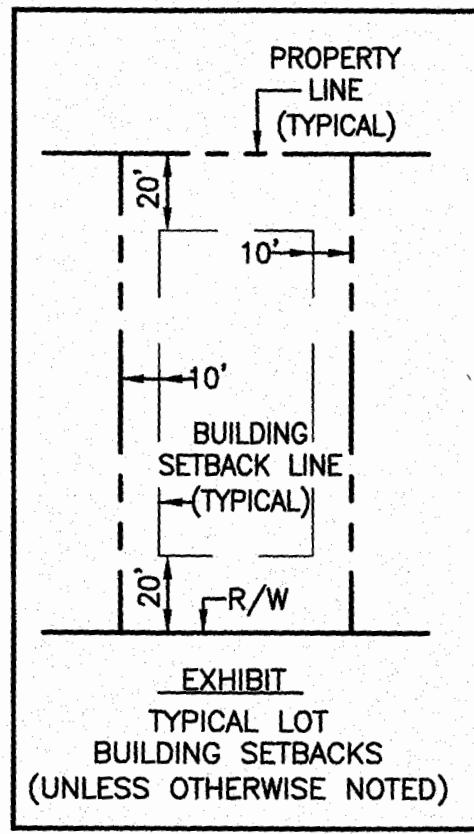
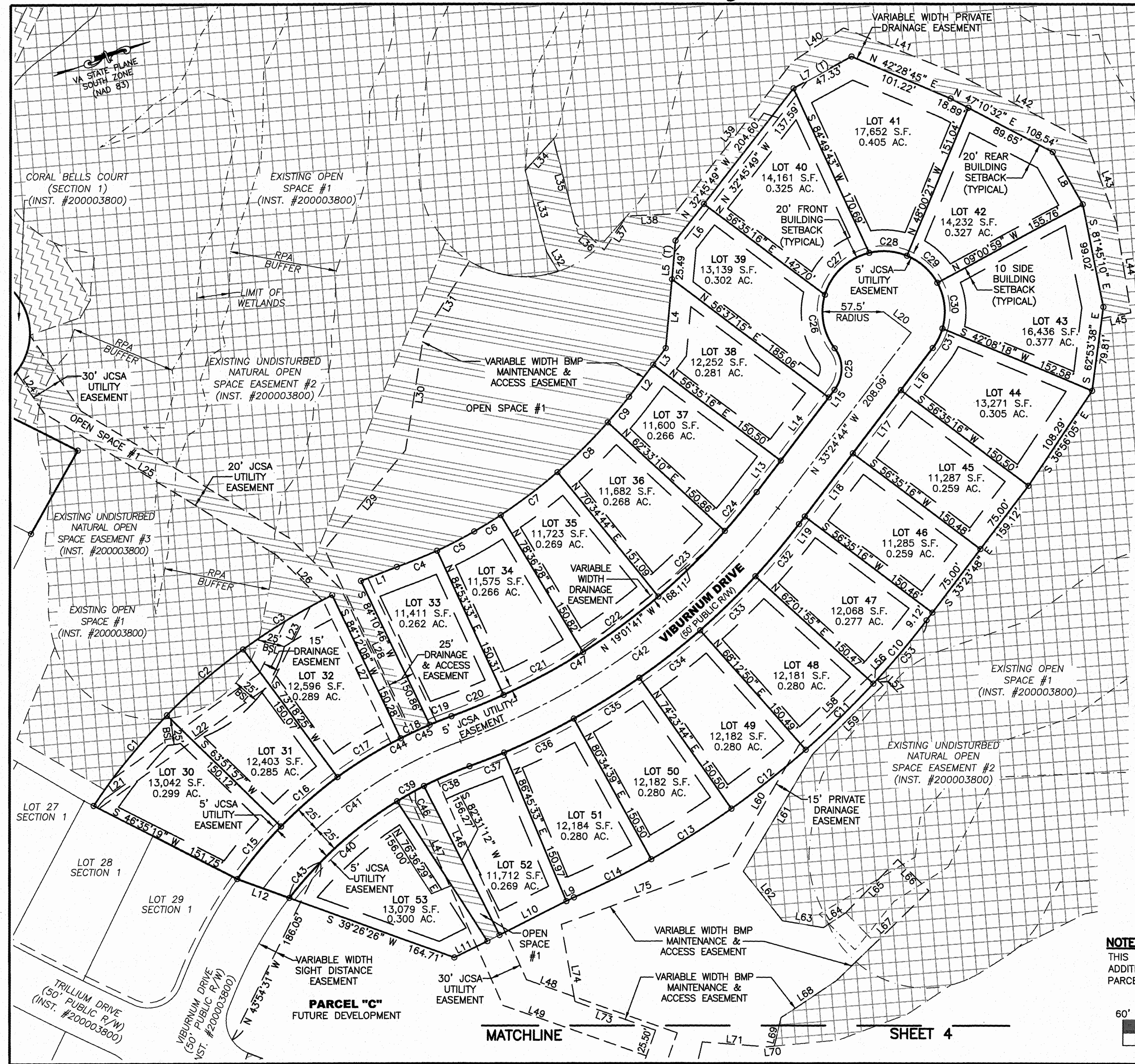
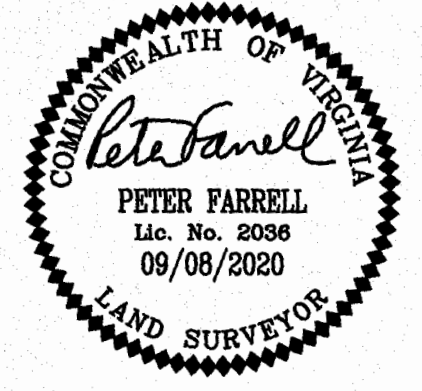


210009237

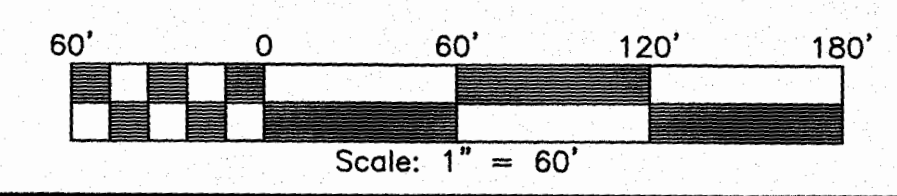
SUBDIVISION OF  
 STONEHOUSE TRACT 3  
 PARCEL "C"  
 CREATING  
**PARCEL "C" SECTION 2**  
 LOT 30 THROUGH LOT 53  
 STONEHOUSE DISTRICT JAMES CITY COUNTY VIRGINIA  
 DATE: 09/08/2020 JOB # 17-378

**LandTech Resources, Inc.**  
 Engineering & Surveying Consultants  
 205 Bulifants Blvd., Suite E., Williamsburg, Virginia 23188  
 Phone: (757) 565-1677 Fax: (757) 565-0782  
 web: landtechresources.com  
 SHEET 3 OF 4  
**JCC-S-20-0041**



SEE SHEET 4 FOR LINE AND CURVE TABLES  
 BSL=RPA BUILDING SETBACK LINE  
 (T) = TOTAL

**NOTE:**  
 THIS PLAT CREATES 2.248 ACRES OF OPEN SPACE #1. ADDITIONAL AREAS OF OPEN SPACE #1 FALL WITHIN AREA OF PARCEL "C" FUTURE DEVELOPMENT.



City of Williamsburg & County of James City  
 Circuit Court: This PLAT was recorded on  
 at 3:37 AM on May 5, 2021  
 Document # 210009237  
 MONA A. FOLEY, CLERK  
 Clerk