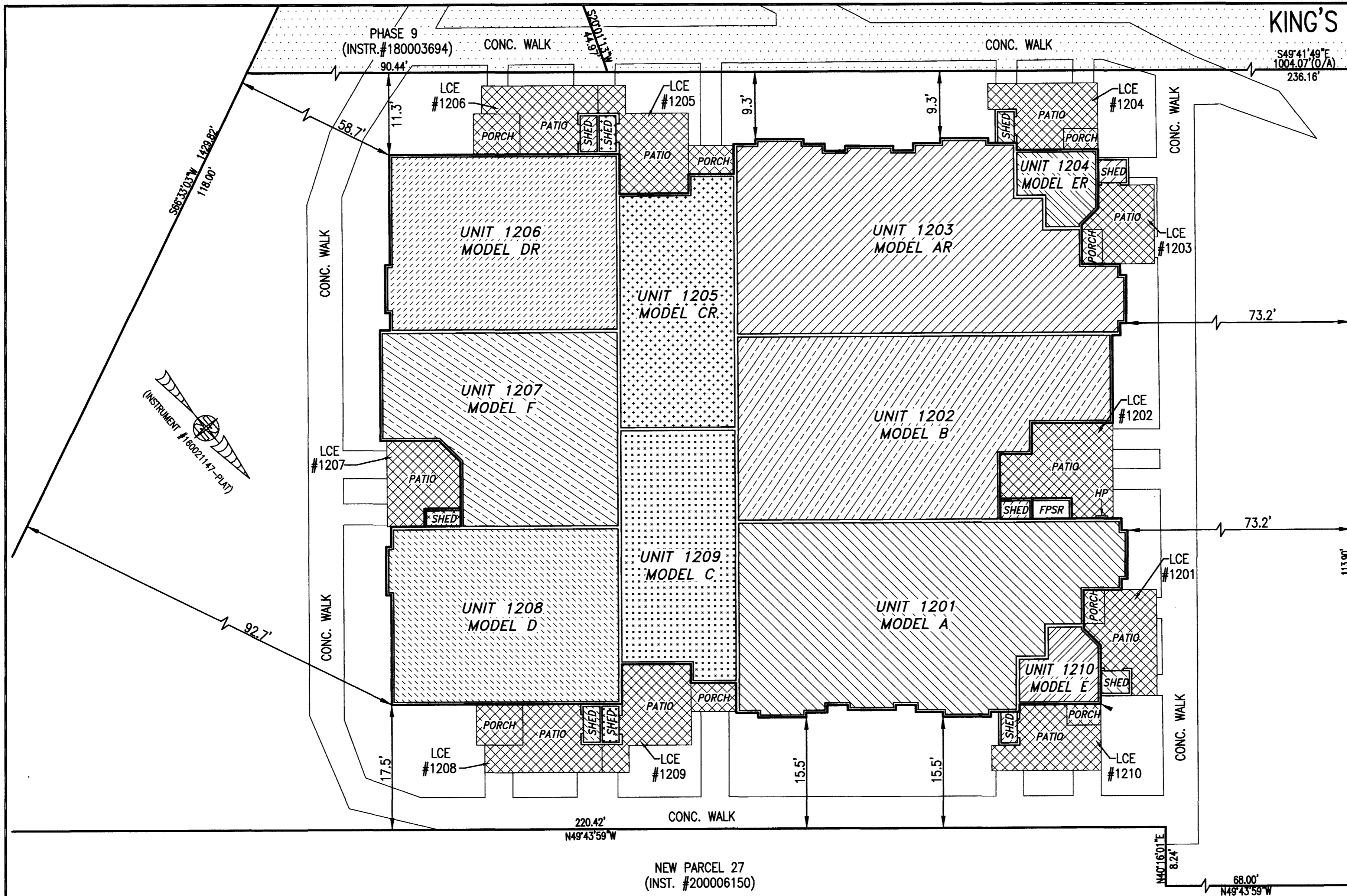


210008803

KING'S LAND (PRIVATE) COURT
 (PHASE 1 INSTR.#170011679)
 (PREVIOUSLY SUBMITTED LAND)

I HEREBY CERTIFY THAT THIS PLAT IS ACCURATE AND THAT IT COMPLIES WITH THE PROVISIONS OF THE CODE OF VIRGINIA OF 1950 AS AMENDED, § 55.1-1920A & B AND I FURTHER CERTIFY THAT ALL IMPROVEMENTS THEREOF DEPICTED HEREON, PURSUANT TO THE CODE OF VIRGINIA § 55.1-1920A, ARE SUBSTANTIALLY COMPLETE.



NEW PARCEL 27
 (INST. #200006150)

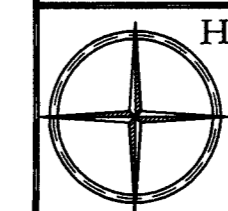
NEW PARCEL 27
 (INST. #200006150)

UNIT ID	UNIT DESCRIPTION	UNIT ADDRESS	PARKING SPACE
A	-INDICATES AREA OF UNIT 1201	#1201 KING'S LAND CT.	311
B	-INDICATES AREA OF UNIT 1202	#1202 KING'S LAND CT.	310
AR	-INDICATES AREA OF UNIT 1203	#1203 KING'S LAND CT.	308
ER	-INDICATES AREA OF UNIT 1204	#1204 KING'S LAND CT.	325
CR	-INDICATES AREA OF UNIT 1205	#1205 KING'S LAND CT.	326
DR	-INDICATES AREA OF UNIT 1206	#1206 KING'S LAND CT.	328
F	-INDICATES AREA OF UNIT 1207	#1207 KING'S LAND CT.	329

UNIT ID	UNIT DESCRIPTION	UNIT ADDRESS	PARKING SPACE
D	-INDICATES AREA OF UNIT 1208	#1208 KING'S LAND CT.	330
C	-INDICATES AREA OF UNIT 1209	#1209 KING'S LAND CT.	315
E	-INDICATES AREA OF UNIT 1210	#1210 KING'S LAND CT.	314
HP	HOUSE PANEL (ELECTRIC)	#1211 KING'S LAND CT.	N/A
FPSR	FIRE PROTECTION SPRINKLER ROOM	#1212 KING'S LAND CT.	N/A
	-INDICATES COMMON ELEMENT (EXCLUDING AREAS OUTSIDE OF SUBMITTED LAND)		
	-INDICATES LIMITED COMMON ELEMENT (LCE) ASSIGNED TO A UNIT. # UNIT ASSIGNED		

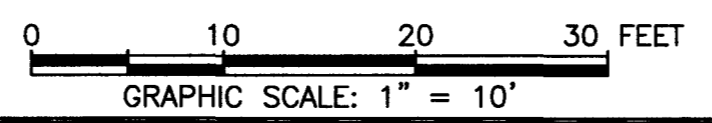
PHASE 56
CONDOMINIUM PLAT AND PLAN
 OF
THE PROMENADE
 AT
JOHN TYLER
 A CONDOMINIUM
 JAMES CITY COUNTY, VIRGINIA

Jo# 160921



Hayden Frye and Associates, Inc.
Land Surveyors
 333 KELLAM ROAD, SUITE 200
 VIRGINIA BEACH, VA., 23462
 PH: (757) 491-7228 FX:(757) 491-7229

DATE: APRIL 20, 2021
 SCALE: 1"=10'
 SHEET 3 OF 5 THIS PHASE



50 Large/Small Plat(s) Recorded
 herewith as # 210008803

City of Williamsburg & County of James City
 Circuit Court: This PLAT was recorded on
 April 30, 2021
 at 11:04 AM PM, PB PG
 Document # 210008803
 MONA A. FOLEY, CLERK
 Clerk

THIS SHEET: BUILDING DETAIL