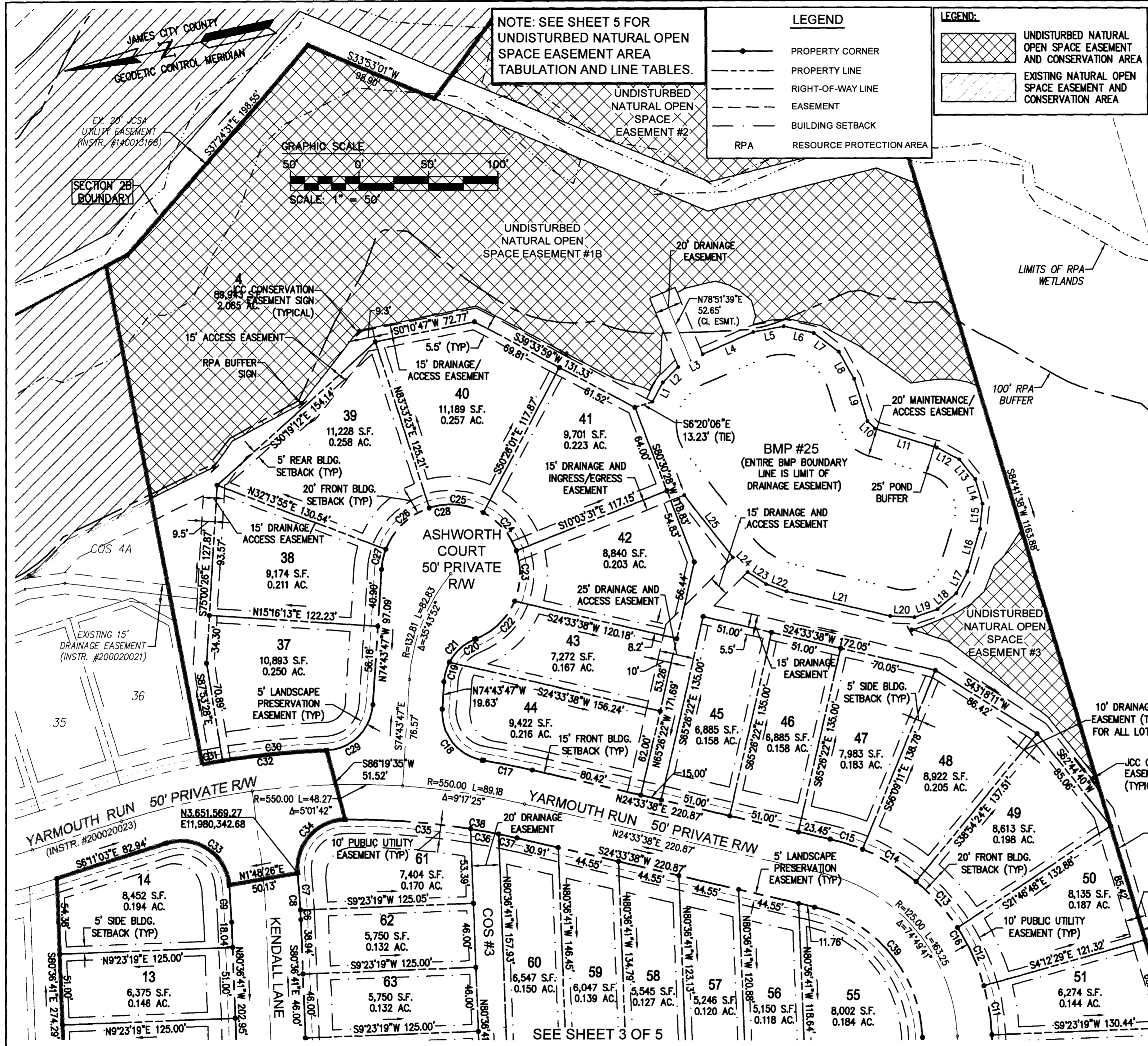


210006570



NOTE: SEE SHEET 5 FOR UNDISTURBED NATURAL OPEN SPACE EASEMENT AREA TABULATION AND LINE TABLES.

LEGEND

- PROPERTY CORNER
- — — PROPERTY LINE
- — — RIGHT-OF-WAY LINE
- - - EASEMENT
- - - BUILDING SETBACK
- - - RPA RESOURCE PROTECTION AREA

LEGEND:

- UNDISTURBED NATURAL OPEN SPACE EASEMENT AND CONSERVATION AREA
- EXISTING NATURAL OPEN SPACE EASEMENT AND CONSERVATION AREA

CURVE TABLE						
CURVE #	DELTA	RADIUS	LENGTH	TANGENT	CHORD	CHORD BEARING
C11	13°35'48"	150.00'	35.60'	17.88'	35.51'	N87°24'35"W
C12	17°34'18"	150.00'	46.00'	23.18'	45.82'	N77°00'22"E
C13	17°07'36"	150.00'	44.84'	22.59'	44.67'	N59°39'24"E
C14	17°14'47"	150.00'	45.15'	22.75'	44.98'	N42°28'13"E
C15	9°17'11"	150.00'	24.31'	12.18'	24.29'	N29°12'14"E
C16	74°49'41"	150.00'	195.90'	114.74'	182.27'	N61°58'29"E
C17	3°38'43"	575.00'	36.58'	18.30'	36.58'	N22°44'16"E
C18	84°21'19"	35.00'	51.53'	31.71'	47.00'	N63°05'34"E
C19	23°57'31"	35.00'	14.64'	7.43'	14.53'	N62°45'01"W
C20	41°43'33"	35.00'	25.49'	13.34'	24.93'	N29°54'30"W
C21	65°41'03"	35.00'	40.12'	22.59'	37.96'	N41°53'15"W
C22	46°24'11"	50.00'	40.49'	21.43'	39.40'	S32°14'49"E
C23	42°11'09"	50.00'	36.81'	19.29'	90.08'	S76°32'28"E
C24	42°47'59"	50.00'	37.35'	19.59'	90.28'	N60°57'58"E
C25	46°00'36"	50.00'	40.15'	21.23'	80.17'	N16°33'41"E
C26	51°19'28"	50.00'	44.79'	24.02'	82.31'	N32°06'21"W
C27	16°57'44"	50.00'	14.80'	7.46'	14.75'	N66°14'56"W
C28	245°41'05"	50.00'	214.40'	77.46'	84.02'	N48°06'44"E
C29	84°21'19"	35.00'	51.53'	31.71'	47.00'	N32°33'07"W
C30	7°31'00"	575.00'	75.43'	37.77'	75.38'	N5°52'02"E
C31	1°29'41"	575.00'	15.00'	7.50'	15.00'	N1°21'42"E
C32	9°00'41"	575.00'	90.43'	45.31'	90.34'	N5°07'12"E
C33	102°19'46"	35.00'	62.51'	43.48'	54.53'	S44°58'50"W
C34	95°11'15"	35.00'	58.15'	38.32'	51.69'	S36°40'29"E
C35	9°55'14"	525.00'	90.90'	45.56'	90.79'	S15°52'45"W
C36	2°14'11"	525.00'	20.49'	10.25'	20.49'	S21°57'28"W
C37	1°29'05"	525.00'	13.60'	6.80'	13.60'	S23°49'06"W
C38	13°38'30"	525.00'	125.00'	62.80'	124.70'	S17°44'23"W
C39	74°49'41"	100.00'	130.60'	76.49'	121.51'	S61°58'29"W

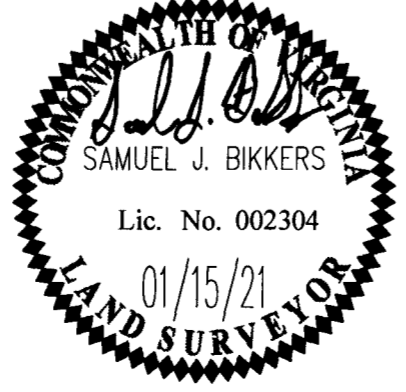
BMP #25 LINE TABLE		
LINE	BEARING	LENGTH
L1	S50°48'40"E	15.88'
L2	S33°12'33"E	15.88'
L3	S15°15'05"E	20.05'
L4	S11°30'11"E	39.98'
L5	S0°27'26"W	22.34'
L6	S24°22'39"W	22.34'
L7	S48°17'51"W	22.34'
L8	S72°13'04"W	22.34'
L9	S84°10'41"W	32.01'
L10	S56°20'00"W	7.57'
L11	S28°29'20"W	46.63'
L12	S39°44'20"W	18.30'
L13	S62°14'20"W	18.30'

BMP #25 LINE TABLE		
LINE	BEARING	LENGTH
L14	S84°44'20"W	18.30'
L15	N72°45'40"W	18.30'
L16	N61°30'40"W	31.89'
L17	N50°41'12"W	17.62'
L18	N29°02'17"W	17.62'
L19	N7°23'22"W	17.62'
L20	N14°15'34"E	17.62'
L21	N25°05'01"E	76.48'
L22	N31°23'36"E	15.80'
L23	N44°00'46"E	15.80'
L24	N56°18'37"E	15.00'
L25	N63°04'19"E	57.11'

5 Large/Small Plat(s) Recorded herewith as # 210006570

City of Williamsburg & County of James City Circuit Court: This PLAT was recorded on April 5, 2021 at 1:11 AM/PM PB PG Document # 210006570

MONA A. FOLEY, CLERK



**AES** CONSULTING ENGINEERS

5248 Olde Towne Road, Suite 1  
Williamsburg, Virginia 23188  
Phone: (757) 253-0040  
Fax: (757) 220-8994  
www.aesva.com

Hampton Roads | Central Virginia | Middle Peninsula

REF: S-20-0054

PLAT OF SUBDIVISION  
LOTS 10-14, 37-82 & COS #3, #4B & #5B

**COLONIAL HERITAGE  
PHASE VI - SECTION 2B**

OWNER / DEVELOPER: COLONIAL HERITAGE, LLC

STONEHOUSE DISTRICT JAMES CITY COUNTY VIRGINIA

Project Contacts: SJB/TRS  
Project Number: 8881-62B  
Scale: 1"=50' Date: 10/22/20  
Sheet Number: **4 of 5**