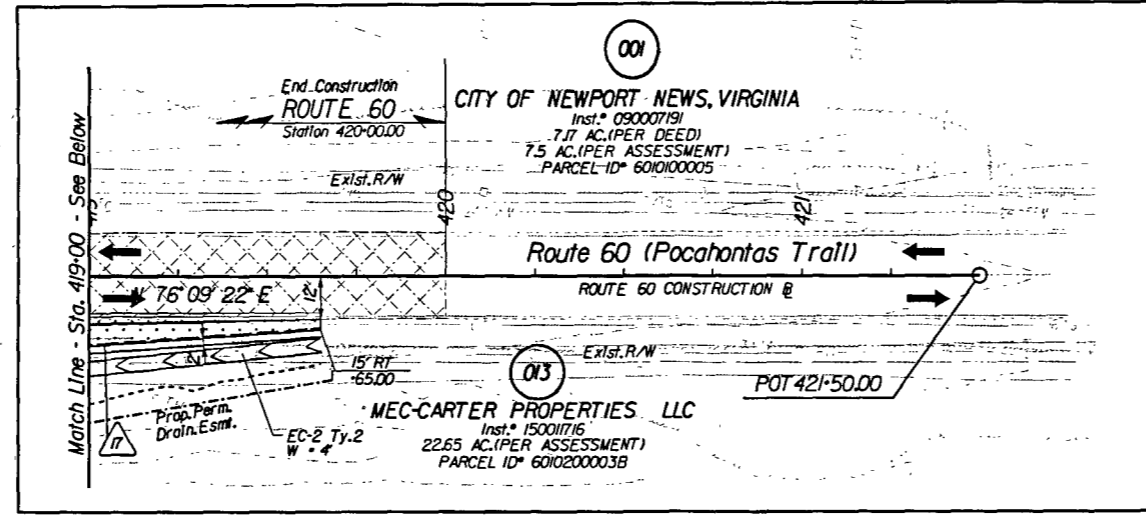


Dewberry

PROJECT MANAGER Mr. Wolf Zeman, PE - VDOT Hampton Roads District - (757) 956-3272
SURVEYED BY, DATE Dewberry Engineers Inc., 03/2020
DESIGNED BY, Dewberry Engineers Inc. - (804) 205-3340
SUBSURFACE UTILITY BY, Accumark, 04/2020

REVISED	STATE	ROUTE	STATE	PROJECT	SHEET NO.
03/24/21	VA.	60		0060-047-627 R-201 C-501	11

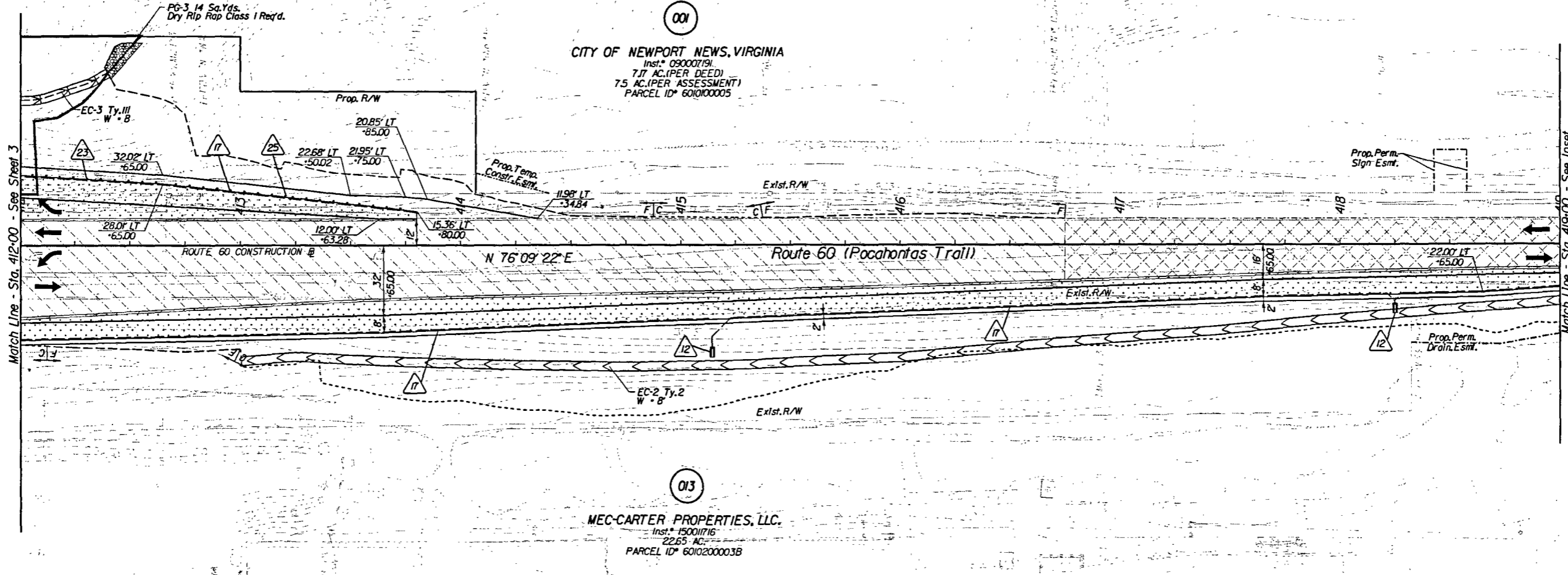
DESIGN FEATURES RELATING TO CONSTRUCTION OR TO REGULATION AND CONTROL OF TRAFFIC MAY BE SUBJECT TO CHANGE AS DEEMED NECESSARY BY THE DEPARTMENT



002
THE PENINSULA PENTECOSTALS, INC.
Inst. # 150016466
4.82 AC. (PER ASSESSMENT)
PARCEL ID # 6010100008

001
CITY OF NEWPORT NEWS, VIRGINIA
Inst. # 090007191
7.17 AC. (PER DEED)
7.5 AC. (PER ASSESSMENT)
PARCEL ID # 6010100005

013
MEC-CARTER PROPERTIES, LLC.
Inst. # 150017116
22.65 AC.
PARCEL ID # 6010200003B



- Key Legend
- 1 6" Curb, Sfd. CG-2 Req'd.
 - 2 4" Curb, Sfd. CG-3 Req'd.
 - 3 6" Curb and Gutter, Sfd. CG-6 Req'd.
 - 4 4" Curb and Gutter, Sfd. CG-7 Req'd.
 - 5 Conc. Raised Median, Sfd. MS-1 Req'd.
 - 6 Conc. Raised Median, Sfd. MS-1A Req'd.
 - 7 Grass Raised Median, Sfd. MS-2 Req'd.
 - 8 Entrance Gutter, Sfd. CG-9B Req'd.
 - 9 Entrance Gutter, Sfd. CG-9D Req'd.
 - 10 Entrance, Sfd. CG-11 Req'd.
 - 11 Curb Ramp, Sfd. CG-12 Req'd.

- 12 Underdrain Endwall, Sfd. EW-12 Req'd.
- 13 Abandon Pipe, Sfd. PP-1 Req'd.
- 14 Groundwater Underdrain, Sfd. UD-1 Req'd.
- 15 Median Underdrain, Sfd. UD-2 Req'd.
- 16 Sidewalk Underdrain, Sfd. UD-3 Req'd.
- 17 Pavement Underdrain, Sfd. UD-4 Req'd.
- 18 Crossdrain, Sfd. CD-1 Req'd.
- 19 Crossdrain, Sfd. CD-2 Req'd.
- 20 Handrail, Sfd. HR-1 Type II Req'd.
- 21 Barbed Wire Fence, Sfd. FE-B Req'd.
- 22 Chain Link Fence, Sfd. FE-CL Req'd.

- 23 Guardrail, Sfd. GR-MGS1 Req'd.
- 24 Guardrail, Sfd. GR-MGS1A Req'd.
- 25 Guardrail Terminal, Sfd. GR-MGS2 Req'd.
- 26 Guardrail, Sfd. GR-10, 3" Height, Type I Req'd.
- 27 Guardrail, Sfd. GR-10, 3" Height, Type II Req'd.
- 28 Guardrail, Sfd. GR-10, 3" Height, Type III Req'd.
- 29 Trailing End Terminal, Sfd. GR-MGS3 Req'd.
- 30 Fixed Object Att., Sfd. GR-FOA-5 Req'd.
- 31 Fixed Object Att., Sfd. GR-FOA-2 Req'd.
- 32 Guardrail, Sfd. GR-MGS4
- 33 Bridge Pier Protection, Sfd. BPPS-1

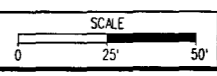
- 34 Remove Exist. Guardrail
- 35 Remove Exist. Fence
- 36 Remove Exist. Structure
- 37 Remove Exist. Pipe
- 38 Abandon and Plug Exist. Pipe
- 39 Ad Just Exist. Structure
- 40 Clean Out Exist. Structure
- 41 Clean Out Exist. Pipe
- 42 Full Depth Sawcut
- 43 6" Curb and Gutter, Mod. CG-6 Req'd.
- 44 Conc. Median Barrier, Sfd. MB-7F Req'd.

- Denotes Full Depth Pavement
- Denotes Guardrail Bumpout Pavement Section
- Denotes Pavement Demolition
- Denotes Mill & Variable Depth Overlay
- Denotes Milling and Overlay

- Denotes Construction Limits In Cuts
- Denotes Construction Limits In Fills

REFERENCES
(PROFILES, DETAIL & DRAINAGE DESCRIPTION SHEETS, ETC.)

- Alignment Data IG
- ESC Phase 1 2D series
- ESC Phase 2 2E series
- ESC Phase 3 2F series
- Pocahontas Trail Profile IIA
- Right-of-Way Plan IIRW



PROJECT	SHEET NO.
0060-047-627	H