

Dewberry

PROJECT MANAGER Mr. Wei Zaman, PE - VDOT Hampton Roads District - (757) 956-3272
SURVEYED BY, DATE Dewberry Engineers Inc., 03/2020
DESIGNED BY, Dewberry Engineers Inc. - (804) 205-3340
SUBSURFACE UTILITY BY, Accumark, 04/2020

| | |
|---|---|
| | |
| Matthew C Thomas 2021.03.25 10:39:52-04'00" | Matthew C Thomas 2021.03.25 10:40:04-04'00" |
| Dewberry Engineers Inc. Glen Allen, Virginia HYDRAULIC ENGINEER | Dewberry Engineers Inc. Glen Allen, Virginia ROADWAY ENGINEER |

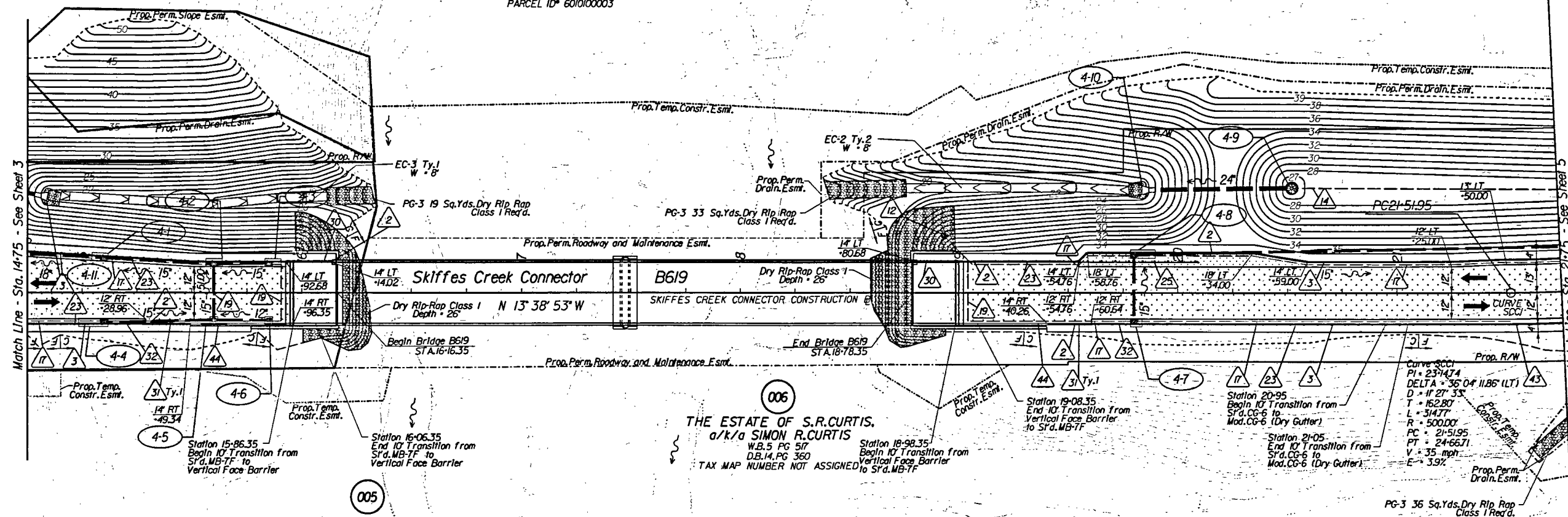
| REVISED | STATE | ROUTE | STATE PROJECT | SHEET NO. |
|---------------------|-------|-------|--------------------------------|-----------|
| 12/8/20 03/24/21 | VA. | 60 | 0060-047-627 R-201 C-501 | 4 |

DESIGN FEATURES RELATING TO CONSTRUCTION OR TO REGULATION AND CONTROL OF TRAFFIC MAY BE SUBJECT TO CHANGE AS DEEMED NECESSARY BY THE DEPARTMENT

002
THE PENINSULA PENTECOSTALS, INC.
Inst. # 150016466
10.49 AC. (PER ASSESSMENT)
PARCEL ID# 6010100007

005
CITY OF NEWPORT NEWS, VIRGINIA
DB 18 PG 296
PARCEL ID# 6010100003

007
SKIFFES CREEK, LLC
Inst. # 020023301
102.60 AC. (PER ASSESSMENT)
102.60 AC.
PARCEL ID# 6010100004A



002
THE PENINSULA PENTECOSTALS, INC.
Inst. # 150016466
4.82 +/- AC.
PARCEL ID# 6010100008

006
**THE ESTATE OF S.R. CURTIS,
a/k/a SIMON R. CURTIS**
W.B.5 PG 517
D.B.14, PG 360
TAX MAP NUMBER NOT ASSIGNED

005
CITY OF NEWPORT NEWS, VIRGINIA
DB 18 PG 296
PARCEL ID# 6010100003

- Key Legend**
- | | | | |
|--|---|--|---|
| 1 6" Curb, Std. CG-2 Req'd. | 12 Underdrain Endwall, Std. EW-12 Req'd. | 23 Guardrail, Std. GR-MGS1 Req'd. | 34 Remove Exst. Guardrail |
| 2 4" Curb, Std. CG-3 Req'd. | 13 Abandon Pipe, Std. PP-1 Req'd. | 24 Guardrail, Std. GR-MGS1A Req'd. | 35 Remove Exst. Fence |
| 3 6" Curb and Gutter, Std. CG-6 Req'd. | 14 Groundwater Underdrain, Std. UD-1 Req'd. | 25 Guardrail Terminal, Std. GR-MGS2 Req'd. | 36 Remove Exst. Structure |
| 4 4" Curb and Gutter, Std. CG-7 Req'd. | 15 Median Underdrain, Std. UD-2 Req'd. | 26 Guardrail, Std. GR-10, 3' Height, Type I Req'd. | 37 Remove Exst. Pipe |
| 5 Conc. Raised Median, Std. MS-1 Req'd. | 16 Sidewalk Underdrain, Std. UD-3 Req'd. | 27 Guardrail, Std. GR-10, 3' Height, Type II Req'd. | 38 Abandon and Plug Exst. Pipe |
| 6 Conc. Raised Median, Std. MS-1A Req'd. | 17 Pavement Underdrain, Std. UD-4 Req'd. | 28 Guardrail, Std. GR-10, 3' Height, Type III Req'd. | 39 Adj. Exst. Structure |
| 7 Grass Raised Median, Std. MS-2 Req'd. | 18 Crossdrain, Std. CD-1 Req'd. | 29 Trailing End Terminal, Std. GR-MGS3 Req'd. | 40 Clean Out Exst. Structure |
| 8 Entrance Gutter, Std. CG-9B Req'd. | 19 Crossdrain, Std. CD-2 Req'd. | 30 Fixed Object Alt., Std. GR-FOA-5 Req'd. | 41 Clean Out Exst. Pipe |
| 9 Entrance Gutter, Std. CG-9D Req'd. | 20 Handrail, Std. HR-1 Type II Req'd. | 31 Fixed Object Alt., Std. GR-FOA-2 Req'd. | 42 Full Depth Sawcut |
| 10 Entrance, Std. CG-11 Req'd. | 21 Barbed Wire Fence, Std. FE-B Req'd. | 32 Guardrail, Std. GR-MGS4 | 43 6" Curb and Dry Gutter, Mod. CG-6 Req'd. |
| 11 Curb Ramp, Std. CG-12 Req'd. | 22 Chain Link Fence, Std. FE-CL Req'd. | 33 Bridge Pier Protection, Std. BPPS-1 | 44 Conc. Median Barrier, Std. MB-TF Req'd. |

- | | | | |
|--|-----------------------------|--|--|
| | Denotes Full Depth Pavement | | Denotes Guardrail Bumpout Pavement Section |
| | Denotes Pavement Demolition | | Denotes Mill & Variable Depth Overlay |
| | Denotes Milling and Overlay | | Denotes Construction Limits in Cuts |
| | | | Denotes Construction Limits in Fills |

**REFERENCES
(PROFILES, DETAIL & DRAINAGE DESCRIPTION SHEETS, ETC.)**

| | |
|-----------------------|-----------|
| Alignment Data | 1G |
| SWM 3B Detail | 2B(3) |
| SWM 5 Detail | 2B(5) |
| ESC Phase 1 | 2D series |
| ESC Phase 2 | 2E series |
| ESC Phase 3 | 2F series |
| Skiffes Creek Profile | 4A |
| Right-of-Way Plan | 4RW |
| Drainage Descriptions | 16 |
| Storm Sewer Profiles | 17 |

| | | |
|-----------|--------------|-----------|
| SCALE | PROJECT | SHEET NO. |
| 0 25' 50' | 0060-047-627 | 4 |