

210005070

1 Large/Small Plat(s) Recorded  
herewith as # 210005070

City of Williamsburg & County of James City  
Circuit Court: This PLAT was recorded on  
at 8:34 AM PM, PB PG  
Document # 210005070  
MONA A. FOLEY, CLERK  
Mona A. Foley, Clerk

SUBDIVISION OF  
STONEHOUSE TRACT 3  
PARCEL "B" SECTION 3  
LOTS 83 THROUGH 152

STONEHOUSE DISTRICT JAMES CITY COUNTY VIRGINIA

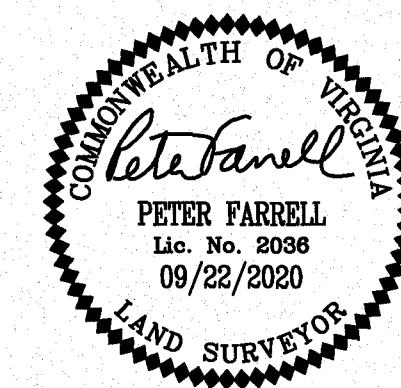
DATE: 09/22/2020 JOB # 17-378



Engineering & Surveying Consultants  
205 Bulfants Blvd., Suite E, Williamsburg, Virginia 23188  
Phone: (757) 565-1677 Fax: (757) 565-0782  
web: landtechresources.com

SHEET 6 OF 7

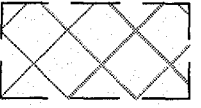
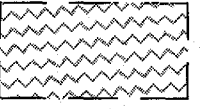


JCC-S-20-0032



PARCEL "B"  
SECTION 3  
LOT & R/W DETAIL

SEE SHEET 7 FOR  
LINE & CURVE TABLES

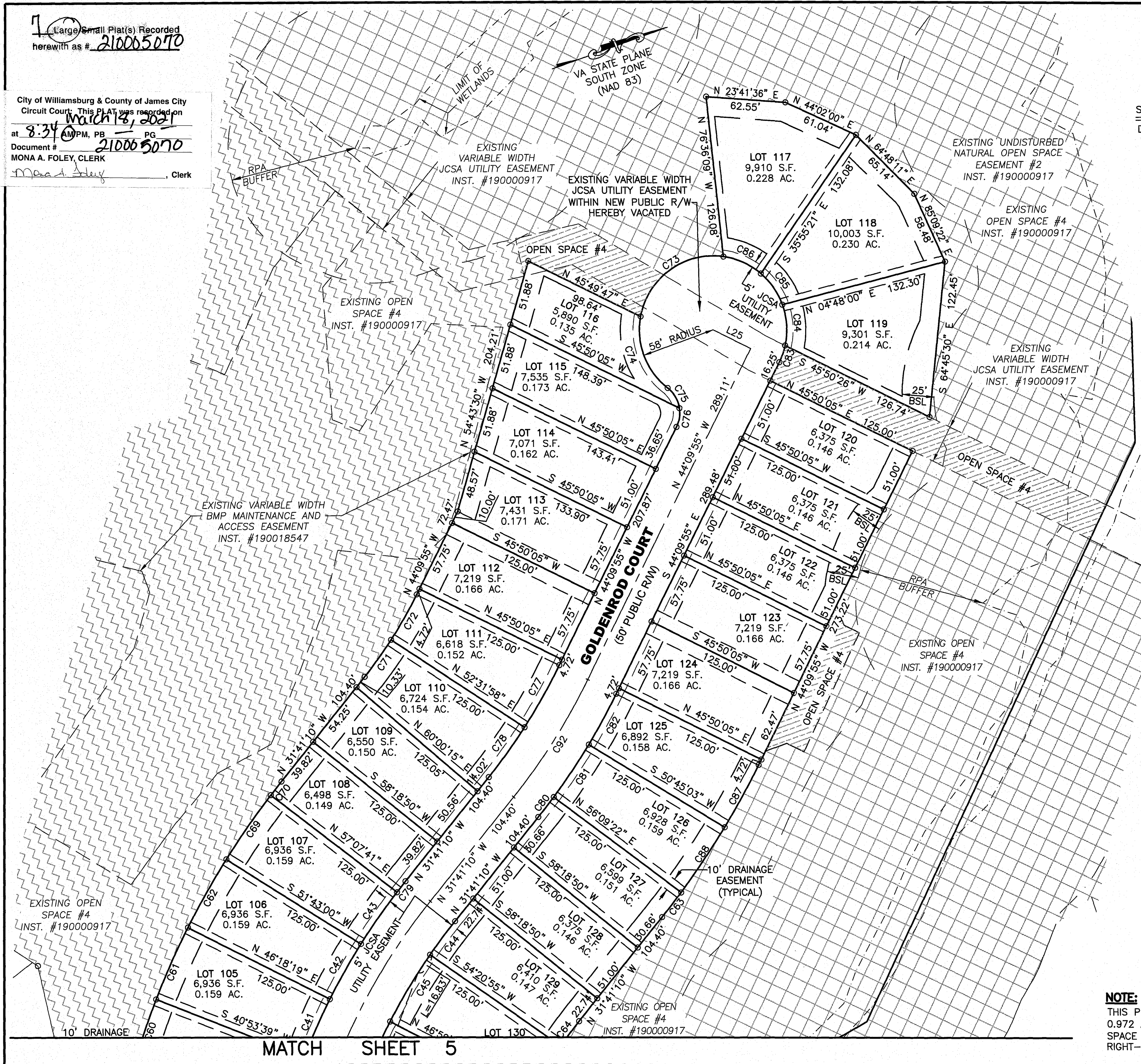
SEE SHEET 4 or 5  
FOR DETAIL OF TYPICAL  
LOT BUILDING SETBACKS  
AND LOT LINE DRAINAGE  
EASEMENTS

-  EXISTING UNDISTURBED NATURAL OPEN SPACE EASEMENT
-  EXISTING OPEN SPACE
-  EXISTING VARIABLE WIDTH JCSA UTILITY EASEMENT WITHIN NEW PUBLIC R/W HEREBY VACATED
-  OPEN SPACE #4  
2,852 S.F. 0.065 AC. (SHEET 6)  
23,339 S.F. 0.536 AC. (SHEET 5)

BSL = RPA BUILDING SETBACK

**NOTE:**

THIS PLAT CREATES 0.601 ACRES OF OPEN SPACE #4 AND 0.972 ACRES OF OPEN SPACE #5. ADDITIONAL AREAS OF OPEN SPACE #5 FALL WITHIN AREA OF PROPOSED RIGHT-OF-WAY-ADJUSTMENT FOR SIX MOUNT ZION ROAD.



MATCH SHEET 5