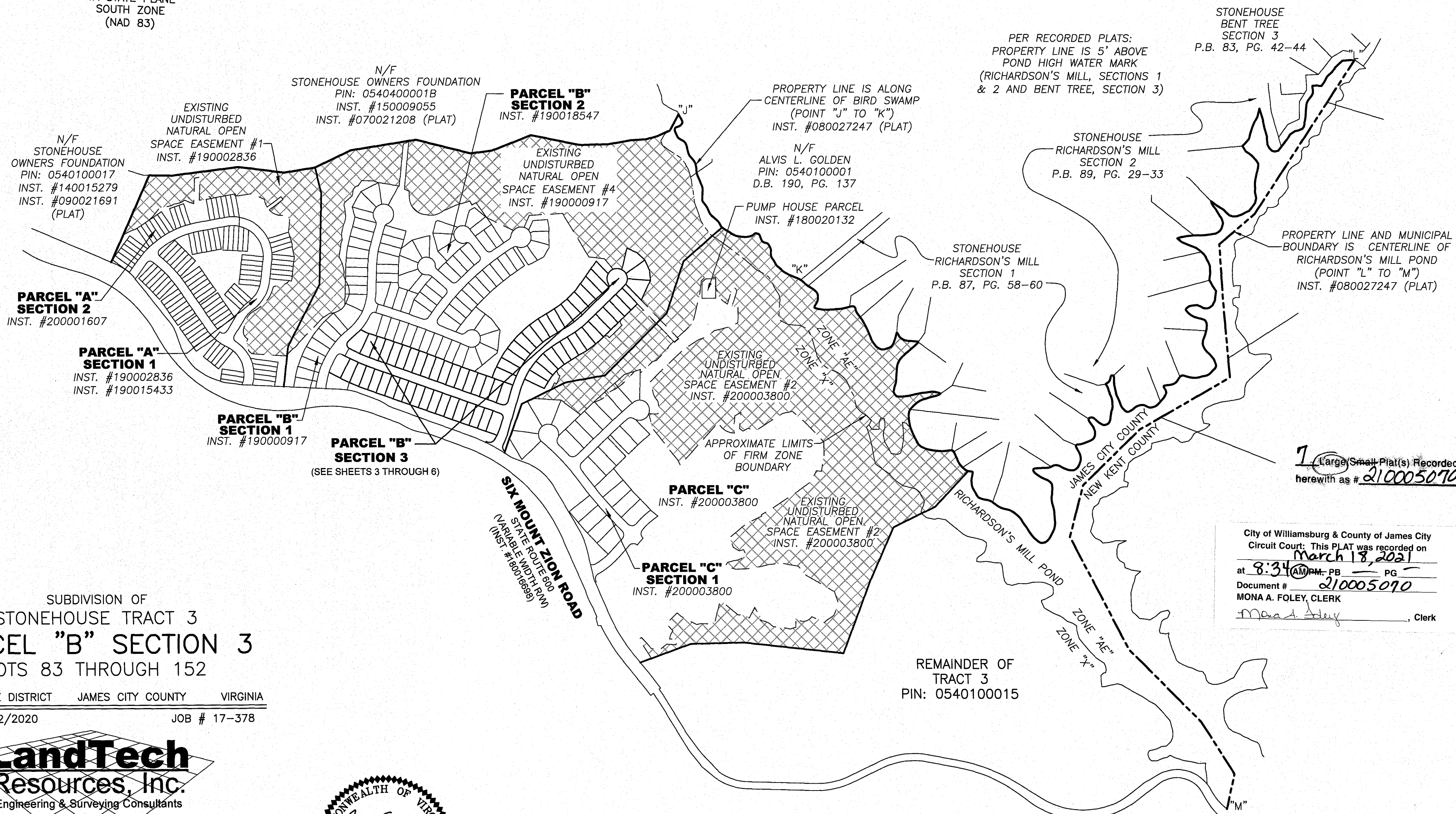


210005070

STONEHOUSE TRACT 3

VA STATE PLANE
SOUTH ZONE
(NAD 83)



1 Large (Small Plat(s) Recorded
herewith as # 210005070

City of Williamsburg & County of James City
Circuit Court: This PLAT was recorded on
March 18, 2021
at 8:34 AM PM, PG. 1
Document # 210005070
MONA A. FOLEY, CLERK
Mona A. Foley, Clerk

SUBDIVISION OF
STONEHOUSE TRACT 3
PARCEL "B" SECTION 3
LOTS 83 THROUGH 152

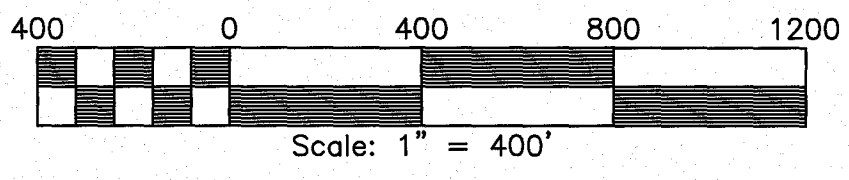
STONEHOUSE DISTRICT JAMES CITY COUNTY VIRGINIA
DATE: 09/22/2020 JOB # 17-378

LandTech
Resources, Inc.
Engineering & Surveying Consultants

205 Bulifants Blvd., Suite E, Williamsburg, Virginia 23188
Phone: (757) 565-1677 Fax: (757) 565-0782
web: landtechresources.com

SHEET 2 OF 7

JCC-S-20-0032



NOTE:
THIS PLAT CREATES 0.601 ACRES OF OPEN SPACE #4 AND
0.972 ACRES OF OPEN SPACE #5. ADDITIONAL AREAS OF OPEN
SPACE #5 FALL WITHIN AREA OF PROPOSED
RIGHT-OF-WAY-ADJUSTMENT FOR SIX MOUNT ZION ROAD.