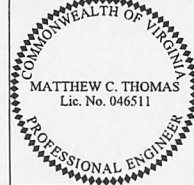
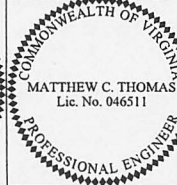
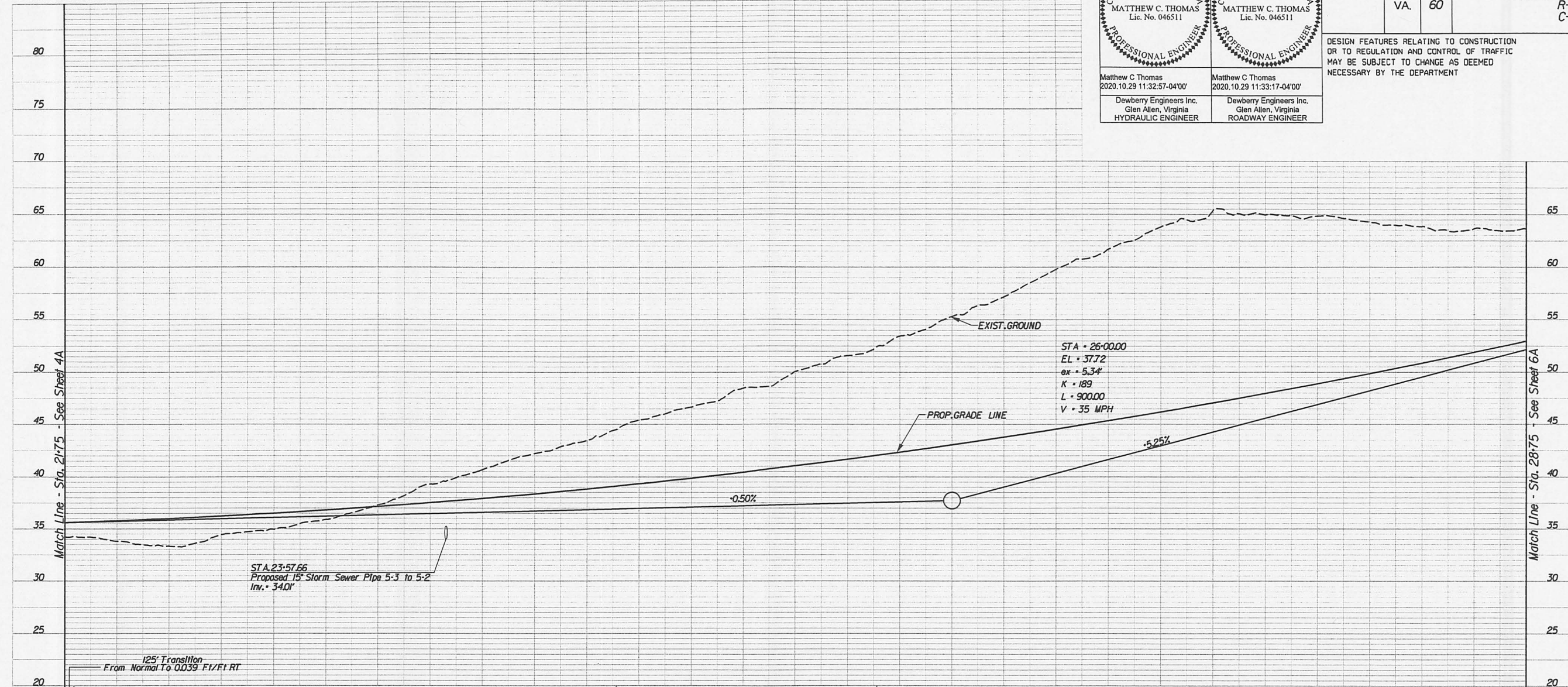


PROJECT MANAGER Mr. Wali Zoman, PE - VDOT Hampton Roads District - (757) 956-3272
SURVEYED BY, DATE Dewberry Engineers Inc., 03/2020
DESIGNED BY, Dewberry Engineers Inc. - (804) 205-3340
SUBSURFACE UTILITY BY, Accumark, 04/2020

 MATTHEW C. THOMAS Lic. No. 046511 PROFESSIONAL ENGINEER	 MATTHEW C. THOMAS Lic. No. 046511 PROFESSIONAL ENGINEER
Matthew C Thomas 2020.10.29 11:32:57-04'00" Dewberry Engineers Inc. Glen Allen, Virginia HYDRAULIC ENGINEER	Matthew C Thomas 2020.10.29 11:33:17-04'00" Dewberry Engineers Inc. Glen Allen, Virginia ROADWAY ENGINEER

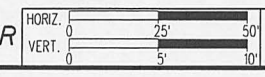
REVISED	STATE	ROUTE	STATE PROJECT	SHEET NO.
	VA.	60	0060-047-627 R-201 C-501	5A

DESIGN FEATURES RELATING TO CONSTRUCTION OR TO REGULATION AND CONTROL OF TRAFFIC MAY BE SUBJECT TO CHANGE AS DEEMED NECESSARY BY THE DEPARTMENT



Full Superelevation At 0.039 F1/F1 RT		125' Transition From 0.039 F1/F1 RT To Normal		Normal	
-79.49		-39.17		-6.17	
RT EDGE OF SHOULDER (XX' OFFSET)	RT E/P (12' OFFSET)	PGL EXIST.	LI E/P (12' OFFSET)		
36.94 (18.03')	36.05	35.61	35.13		
37.25 (18.98')	36.25	35.78	35.28		
37.61 (20.37')	36.46	35.99	35.48		
37.89 (18.90')	36.70	36.23	35.72		
	36.97	36.51	36.00		
	37.28	36.81	36.30		
	37.62	37.15	36.64		
	37.99	37.52	37.02		
	38.40	37.93	37.42		
	38.84	38.37	37.86		
	39.31	38.84	38.33		
	39.75	39.34	38.90		
	40.15	39.88	39.62		
	40.57	40.45	40.21		
	41.04	41.05	40.81		
	41.53	41.69	41.45		
	42.12	42.36	42.12		
	42.82	43.06	42.82		
	43.56	43.80	43.56		
	44.33	44.57	44.33		
	45.13	45.37	45.13		
	45.96	46.20	45.96		
	46.83	47.07	46.83		
	47.73	47.97	47.73		
	48.66	48.90	48.66		
	49.63	49.87	49.63		
	50.63	50.87	50.63		
	51.66	51.90	51.66		
	52.72	52.96	52.72		

SKIFFES CREEK CONNECTOR



PROJECT 0060-047-627
SHEET NO. 5A

Skiffes Creek LLC Instrument 210004922 03/16/2021 State Highway Plat Book 10 Page 500