

**Dewberry**

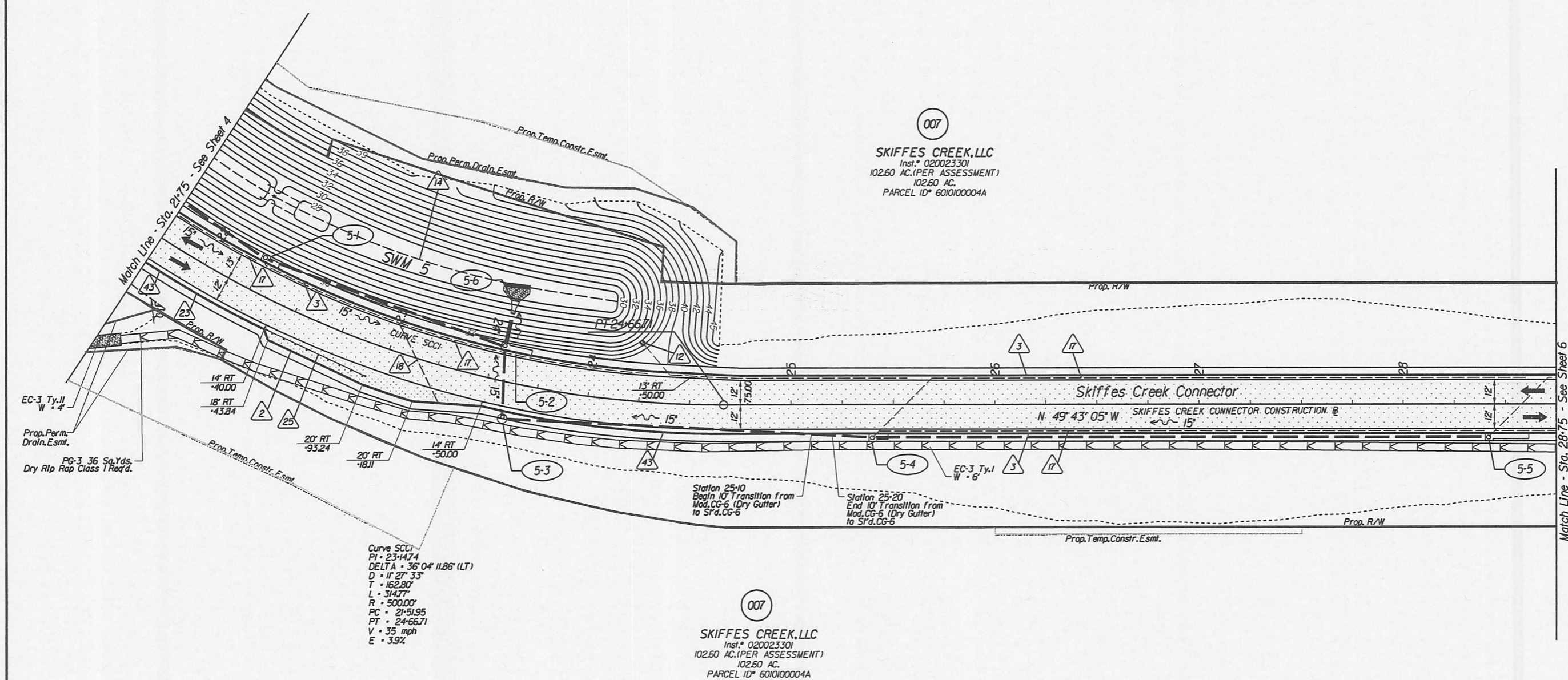
PROJECT MANAGER Mr. Wali Zaman, PE - VDOT Hampton Roads District - (757) 956-3272  
SURVEYED BY, DATE Dewberry Engineers Inc., 03/2020  
DESIGNED BY, Dewberry Engineers Inc. - (804) 205-3340  
SUBSURFACE UTILITY BY, Accumark, 04/2020

|   |   |
|---|---|
|   |   |
| Matthew C Thomas<br>2020.12.09 12:01:11-05'00"<br>Dewberry Engineers Inc.<br>Glen Allen, Virginia<br>HYDRAULIC ENGINEER | Matthew C Thomas<br>2020.12.09 12:01:30-05'00"<br>Dewberry Engineers Inc.<br>Glen Allen, Virginia<br>ROADWAY ENGINEER |

| REVISED | STATE | ROUTE | STATE PROJECT                  | SHEET NO. |
|---------|-------|-------|--------------------------------|-----------|
| 12/8/20 | VA.   | 60    | 0060-047-627<br>R-201<br>C-501 | 5         |

DESIGN FEATURES RELATING TO CONSTRUCTION OR TO REGULATION AND CONTROL OF TRAFFIC MAY BE SUBJECT TO CHANGE AS DEEMED NECESSARY BY THE DEPARTMENT

Skiffes Creek LLC Instrument 210004922 3/16/2021 State Highway Plat Book 10 Page 499



- Key Legend**
- 1 6" Curb, SFD, CG-2 Req'd.
  - 2 4" Curb, SFD, CG-3 Req'd.
  - 3 6" Curb and Gutter, SFD, CG-6 Req'd.
  - 4 4" Curb and Gutter, SFD, CG-7 Req'd.
  - 5 Conc. Raised Median, SFD, MS-1 Req'd.
  - 6 Conc. Raised Median, SFD, MS-1A Req'd.
  - 7 Grass Raised Median, SFD, MS-2 Req'd.
  - 8 Entrance Gutter, SFD, CG-9B Req'd.
  - 9 Entrance Gutter, SFD, CG-9D Req'd.
  - 10 Entrapment, SFD, CG-11 Req'd.
  - 11 Curb Ramp, SFD, CG-12 Req'd.
  - 12 Underdrain Endwall, SFD, EW-12 Req'd.
  - 13 Abandon Pipe, SFD, PP-1 Req'd.
  - 14 Groundwater Underdrain, SFD, UD-1 Req'd.
  - 15 Median Underdrain, SFD, UD-2 Req'd.
  - 16 Sidewalk Underdrain, SFD, UD-3 Req'd.
  - 17 Pavement Underdrain, SFD, UD-4 Req'd.
  - 18 Crossdrain, SFD, CD-1 Req'd.
  - 19 Crossdrain, SFD, CD-2 Req'd.
  - 20 Handrail, SFD, HR-1 Type II Req'd.
  - 21 Barbed Wire Fence, SFD, FE-B Req'd.
  - 22 Chain Link Fence, SFD, FE-CL Req'd.
  - 23 Guardrail, SFD, GR-MGSI Req'd.
  - 24 Guardrail, SFD, GR-MGSI Req'd.
  - 25 Guardrail Terminal, SFD, GR-MGS2 Req'd.
  - 26 Guardrail, SFD, GR-10, 3' Height, Type I Req'd.
  - 27 Guardrail, SFD, GR-10, 3' Height, Type II Req'd.
  - 28 Guardrail, SFD, GR-10, 3' Height, Type III Req'd.
  - 29 Trailing End Terminal, SFD, GR-MGS3 Req'd.
  - 30 Fixed Object Att., SFD, GR-FOA-5 Req'd.
  - 31 Fixed Object Att., SFD, GR-FOA-2 Req'd.
  - 32 Guardrail, SFD, GR-MGS-4
  - 33 Bridge Piler Protection, SFD, BPPS-1
  - 34 Remove Exist. Guardrail
  - 35 Remove Exist. Fence
  - 36 Remove Exist. Structure
  - 37 Remove Exist. Pipe
  - 38 Abandon and Plug Exist. Pipe
  - 39 Adjust Exist. Structure
  - 40 Clean Out Exist. Structure
  - 41 Clean Out Exist. Pipe
  - 42 Full Depth Sawcut
  - 43 6" Curb and Dry Gutter, Mod. CG-6 Req'd.
  - 44 Conc. Median Barrier, SFD, MB-7F Req'd.

- Denotes Full Depth Pavement
- Denotes Guardrail Bumpout Pavement Section
- Denotes Pavement Demolition
- Denotes Mill & Variable Depth Overlay
- Denotes Milling and Overlay
- Denotes Construction Limits In Cuts
- Denotes Construction Limits In Fills

**REFERENCES**  
(PROFILES, DETAIL & DRAINAGE DESCRIPTION SHEETS, ETC.)

|                       |           |
|-----------------------|-----------|
| Alignment Data        | 1G        |
| SWM 5 Detail          | 2B(5)     |
| ESC Phase 1           | 2D series |
| ESC Phase 2           | 2E series |
| ESC Phase 3           | 2F series |
| Skiffes Creek Profile | 5A        |
| Right-of-Way Plan     | 5RW       |
| Drainage Descriptions | 16        |
| Storm Sewer Profiles  | 17        |

SCALE: 0 25' 50'

|         |              |           |   |
|---------|--------------|-----------|---|
| PROJECT | 0060-047-627 | SHEET NO. | 5 |
|---------|--------------|-----------|---|